

ABT-SW176/AB

EN 54-24

SURFACE MOUNTED AB LOUDSPEAKER

- ✓ *Compliance with EN 54-24*
- ✓ *Certificate of Conformity:
1438-CPR-0885*
- ✓ *Compliance with BS5839-8 standard
(thermal protection)*

**NEW!**

The ABT-SW176/AB is an elegant multi-function loudspeaker designed to guarantee the highest acoustic parameters. The loudspeaker can be mounted either on a wall or on a ceiling.

ABT-SW176/AB is equipped with two in-built drivers, two transformers, two thermal fuses and two ceramic connection blocks, which allow the connection of two independent A/B loudspeaker lines.

Our loudspeakers are perfect on any circulation routes and in staircases located in shopping centres, offices, schools, hotels, hospitals, and industrial buildings.

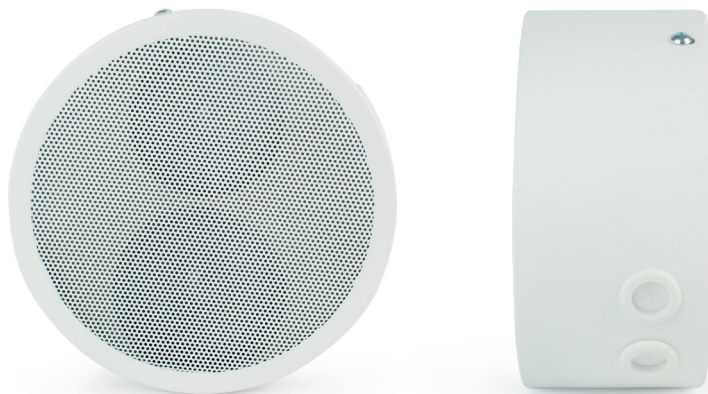
The loudspeaker mingles well with any interior and is virtually invisible thanks to its small dimensions and neat white finish.

The loudspeaker offers adjustable power regulation through connectivity to applicable transformer tapings thus allowing suitable acoustic pressure (the level of sound) within areas of sound emission adequately to the acoustic conditions existing in those areas.

To be quite sure our loudspeakers comply with the highest quality standards we test them thoroughly following the most meticulous procedures that warrant excellent parameters of sound emission, safety, and reliability. They are also recommended for use in any and all public address systems.

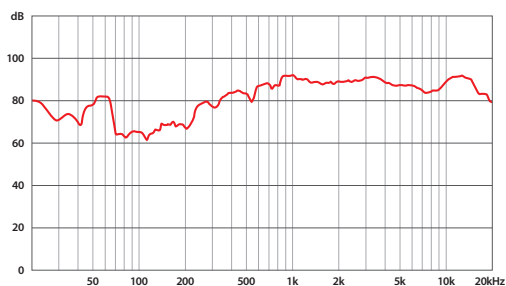
CHARACTERISTICS

- » *Easy and quick to mount*
- » *Modern and elegant design*
- » *High quality sound of both speech and music*
- » *Ideal for on-wall or on-ceiling mounting*
- » *6 W transformers with multiple branches ensuring accurate selection of output power*
- » *Operation of two A/B loudspeaker lines*



	ABT-SW176/AB
Electrical	
Rated power, W	2 x 6
Tappings 100 V line according to EN 54-24, W	2 x 6 / 3 / 1,5 / 0,75
Tappings 70V line, W	2 x 3 / 1,5 / 0,75 / 0,37
Transformer impedance @ 100 V, Ω	2 x 1667/3333/6667/13333
Driver impedance, Ω	2 x 8
Effective frequency range, Hz	150–20 000
Sensitivity @ 4 m, 1 W, dB	74
SPL @ 4 m, rated power, dB	84
SPL @ 1 m, 1 W, dB, test signal bandwidth 300 Hz–6 kHz	86
SPL @ 1 m, rated power, dB, test signal bandwidth 300 Hz–6 kHz	96
Horizontal dispersion at 500 Hz / 1 kHz / 2 kHz / 4 kHz, [°]	360 / 160 / 75 / 40
Vertical dispersion at 500 Hz / 1 kHz / 2 kHz / 4 kHz, [°]	360 / 190 / 130 / 100
Environmental	
Environmental type / IP Rating according to EN 54-24	A / IP21C
IP Rating	32
Min./max. ambient temperature	-10°C / 55°C
Mechanical	
Dimensions, mm	Height 80, \varnothing 170
Net weight, kg	1,26
Colour	White (RAL 9003) / Black (RAL 9011)
Material	Steel
Mounting	Screw
Option	
For DC line monitoring	Capacitor (ABT-SW176C/AB)
Colour optional	RAL palette
Ease Model	

Frequency band:



Circular chart of directional characteristic:

