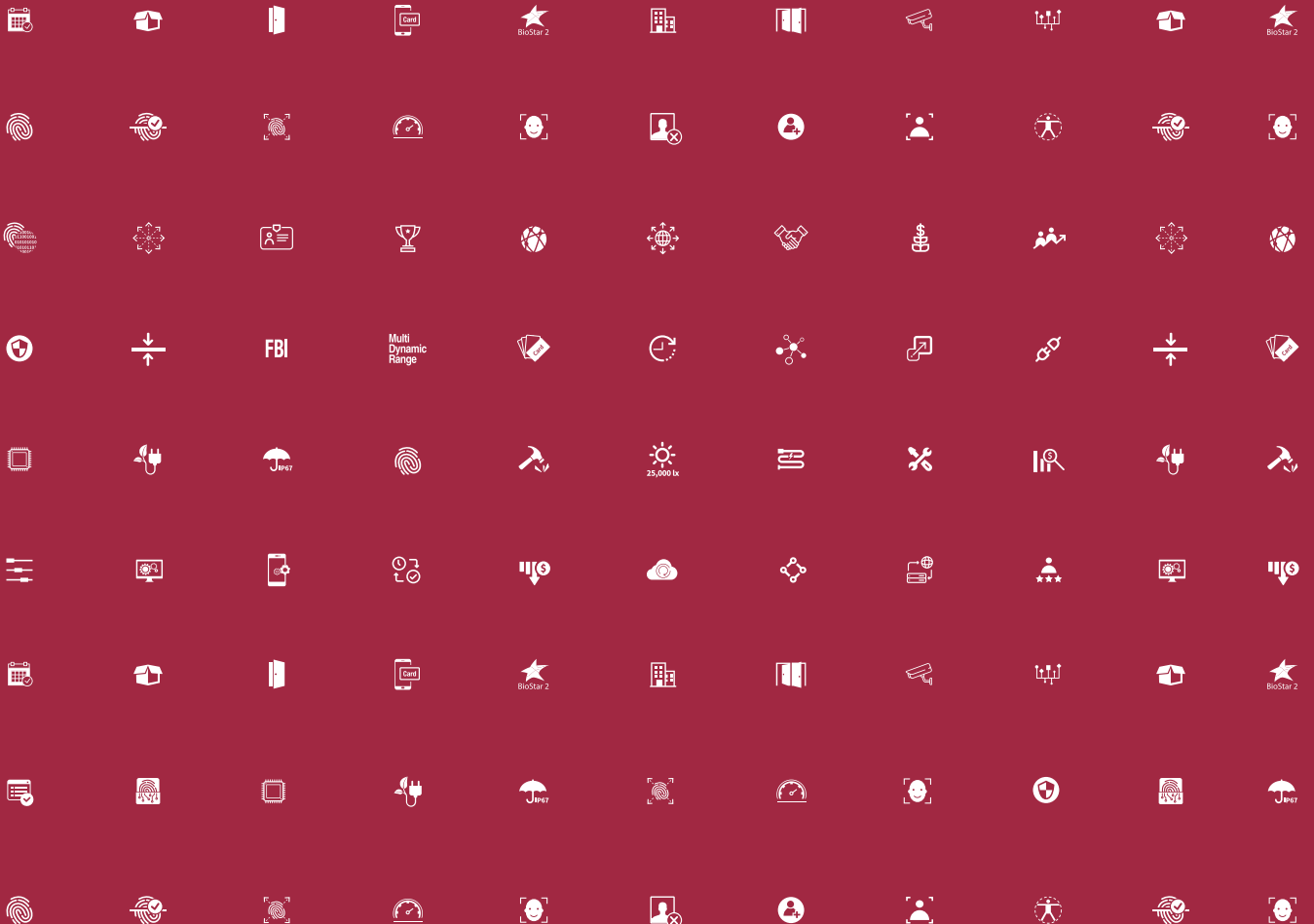


BioStar 2

Web-based Open Integrated Security Platform



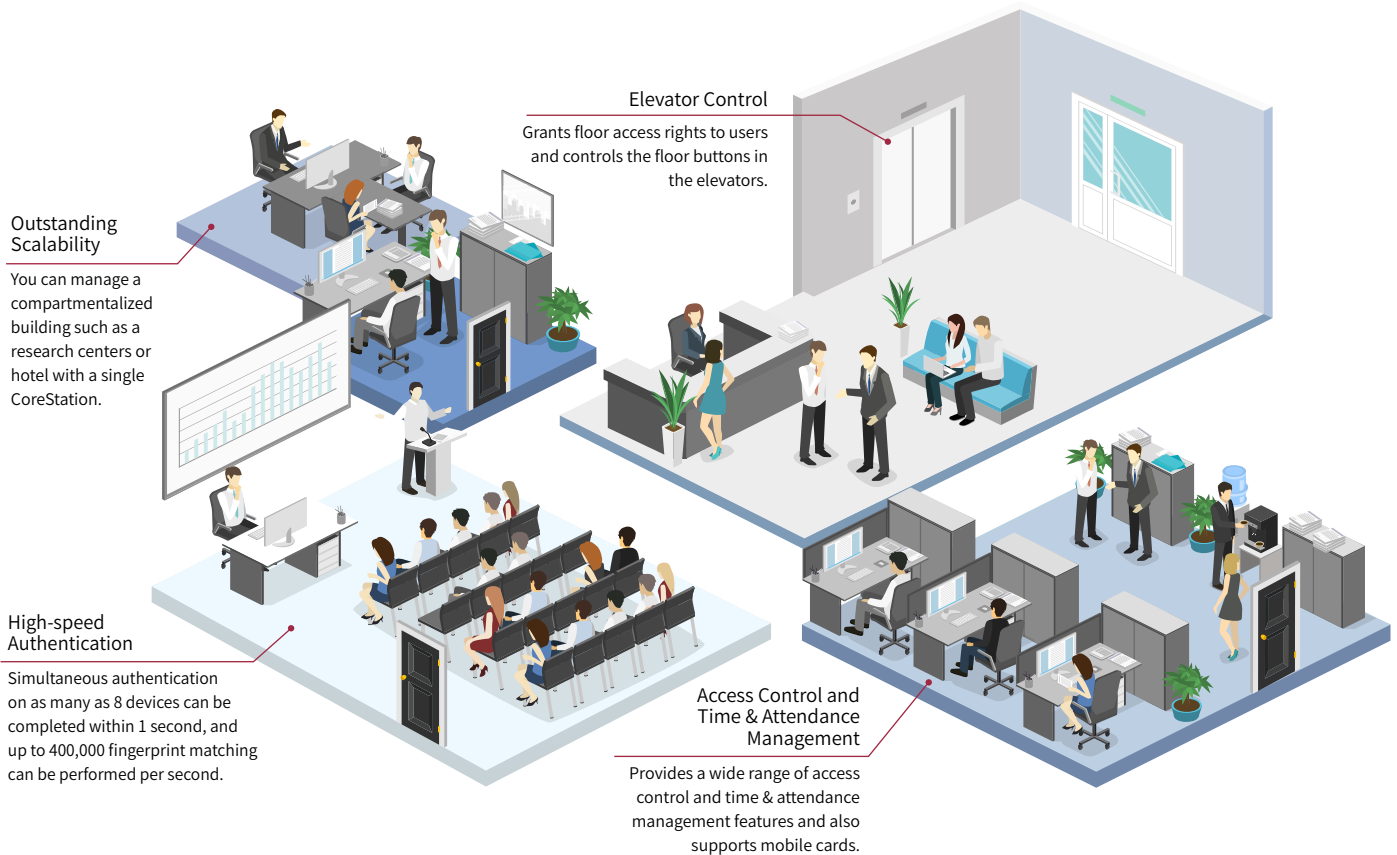
Centralized System | Access Control and Time & Attendance Management







With Suprema's CoreStation and readers, you can build a centralized system, which is a system based on access control units (ACU). Suprema's centralized system not only provides the benefits of biometrics, but it also provides enhanced security and excellent system scalability. In addition, the centralized system also enables you to upgrade your existing systems at lower installation cost. Integrated with BioStar 2, this system safely stores all information about each user including the user's name, ID, PIN, access rights and fingerprint data by storing it on a single device. Suprema's intelligent biometric controller, CoreStation, is capable of performing fingerprint matching as well as RFID cards. It provides differentiated performance and features based on a 4-channel module that boasts superior hardware performance and scalability.

Strength in numbers

- Performs 400,000 times of fingerprint matching within 1 second
- Stores information about up to 500,000 users and RFID cards
- Stores up to 5,000,000 text logs
- Controls up to 132 Wiegand devices (DM-20 connection required)
- Controls up to 64 RS-485 devices
- Processes fingerprint authentication on up to 8 devices simultaneously within 1 second

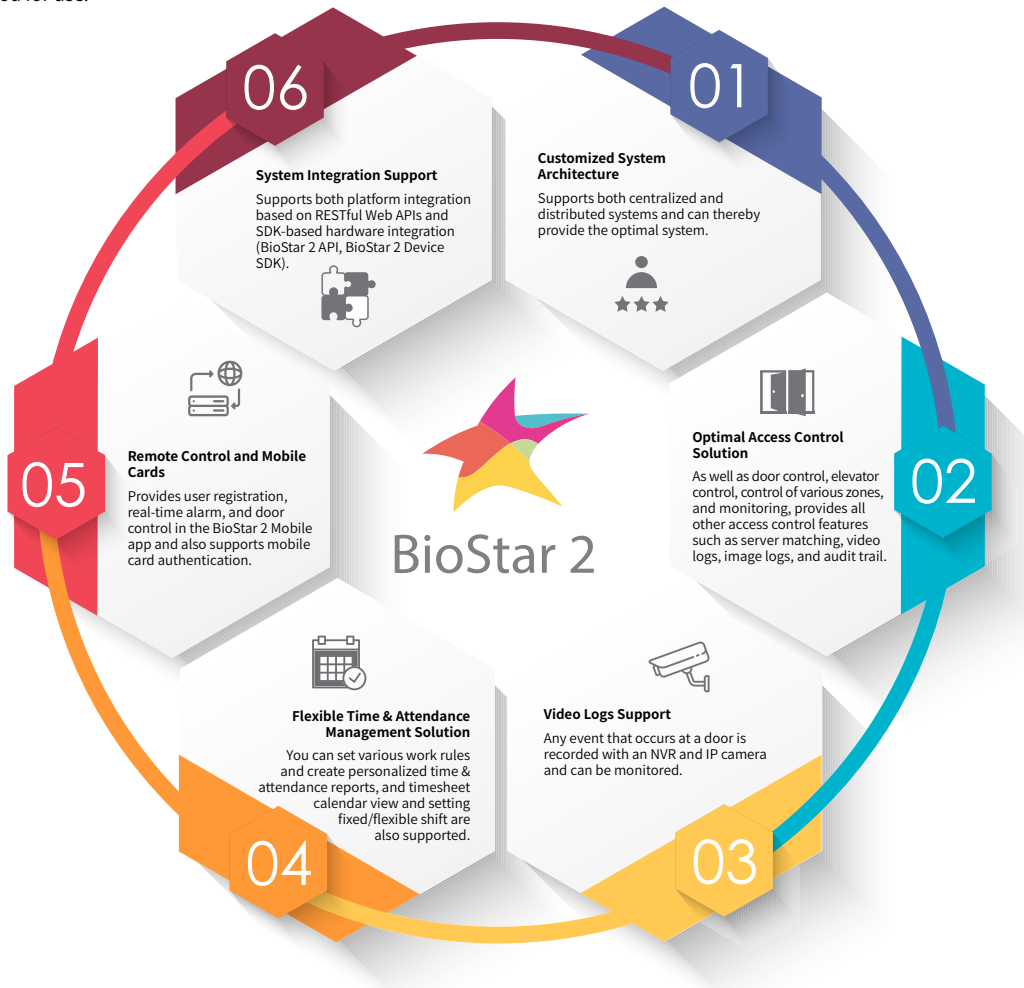
CoreStation Specs.	
CPU	1.4 GHz Octa Core
Memory	8 GB Flash + 1 GB RAM
Maximum No. of Users	500,000 (1:1) and 100,000 (1:N)
Maximum No. of Templates	1,000,000 (1:1) and 200,000 (1: N)*
Maximum No. of Text Logs	5,000,000 (text)
Serial Communication Protocol	OSDP V2
Ethernet	10/100 Mbps and Auto MDI/MDI-X
RS-485	5ch
Wiegand	4ch Input
Relay	4 Relays
TTL Input	8ch (Supervised input selectable)
TTL Output	8ch
AUX Input	2ch (AC power fail and tamper)



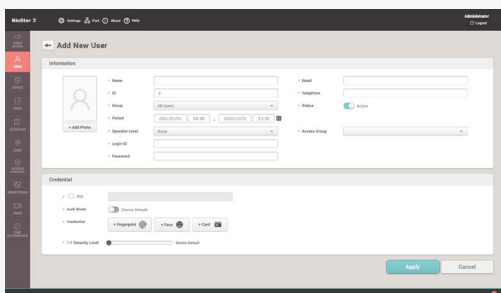
Supported Products					Accessory
					
Intelligent Biometric Controller CoreStation	Compact Fingerprint Reader BioEntry R2	Outdoor Compact RFID Reader XPass D2	Secure Multi-output Module OM-120	Secure Multi-door I/O Module DM-20	Dedicated Cabinet ENCR-10

BioStar 2 Platform

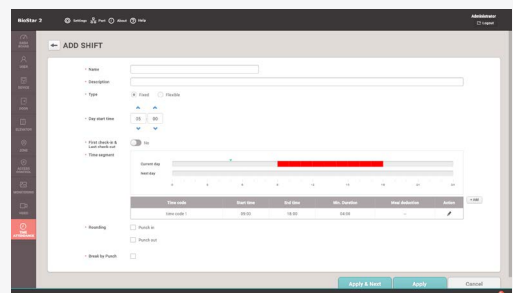
BioStar 2 is a web-based, open, and integrated security platform that provides comprehensive functionality for access control and time & attendance. Featuring a modular, flexible framework, the platform supports both the BioStar 2 Device SDK which is used to integrate Suprema's terminals with third-party systems and web APIs which are used to integrate the functionality of the BioStar 2 platform with third-party systems. In addition, in step with the mobile era, the mobile app for BioStar 2 has been designed to enable you not only to remotely control the BioStar 2 platform but also to get a mobile card issued to you for use.



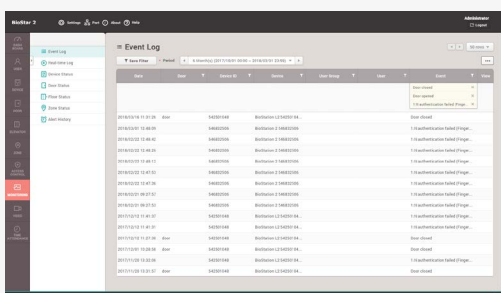
Subdivided user information registration



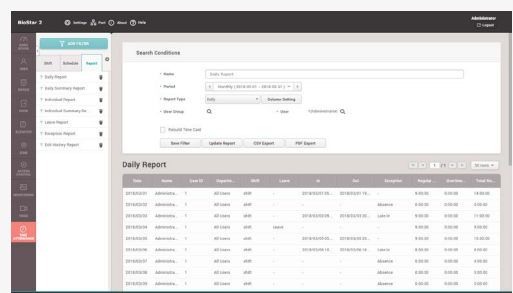
Easy work rule configuration



Enhanced monitoring capabilities



Multi-functional time & attendance management reports



Distributed System | Access Control and Time & Attendance Management

In distributed systems, IP terminal and readers perform the roles of a controller and reader simultaneously.

Therefore, you can undertake functions such as user management, access control management, and biometrics with a single terminal. Suprema's IP terminals and readers improve system reliability with easy system configuration and distributed management. It also provides the benefits of simple wiring and low installation/maintenance costs.

Elevator Control

Grants floor access rights to users and controls the floor buttons in the elevators.

Easy System Connectivity & Easy Maintenance

Distributed systems provide easy system connectivity and easy maintenance.

Access Control and Time & Attendance Management

Provides a wide range of access control and time & attendance management features and also supports mobile cards.

Outstanding Performance & Contactless Authentication

Provides superior performance based on the world's best biometric algorithms and hardware as well as the benefits of contactless authentication via FaceStation 2.

Supported Products



IP Face Recognition Terminal
FaceStation 2



IP Fingerprint Terminal
BioStation A2



Outdoor IP Fingerprint Terminal
BioStation 2



IP Fingerprint Terminal
BioStation L2



Outdoor IP Fingerprint Terminal
BioLite N2



Outdoor IP Fingerprint Device
BioLite Net



Outdoor IP Fingerprint Device
BioEntry W2



Compact IP Fingerprint Device
BioEntry P2



IP Fingerprint Device
BioEntry Plus



IP RFID Terminal
Xpass



IP RFID Terminal
Xpass S2



Secure Door Control Module
Secure I/O 2



Secure Multi-output Module
OM-120

BioStar 2 Mobile

BioStar 2 Mobile enables you to freely control BioStar 2 anywhere, anytime on your smart device. Developed based on BioStar 2's web APIs, BioStar 2 Mobile provides services appropriate for the mobile era, including user information registration, BioMini-based fingerprint registration, door control, real-time door and zone status notification, and access control event monitoring. In addition, mobile cards which you can issue via BioStar 2 are an authentication means capable of completely replacing existing plastic cards, and they help you build the most convenient and innovative mobile access control solutions.



Remote User Registration



Remote Door Control



Real-time Door and Zone Status Notification



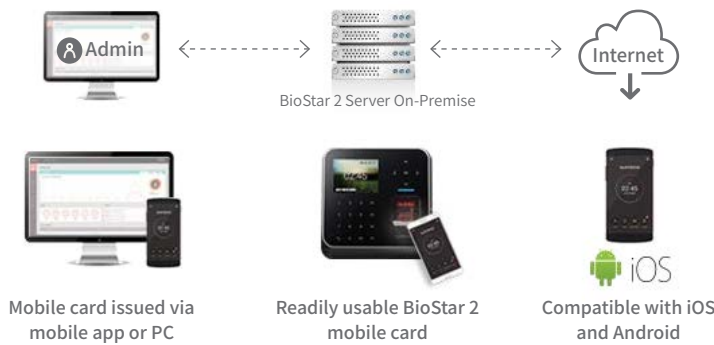
Access Control Event Monitoring



Mobile Cards



BioStar 2 Mobile Card



Android

- Bluetooth** **BLE** Bluetooth Low Energy
Communicates with Android devices via BLE
Protects data communication with the encrypted AES 128-bit algorithm
- NFC** **NFC** Near Field Communication
Communicates with Android devices via NFC's HCE
Protects data communication with the encrypted AES 128-bit algorithm
* HCE is not available from all Android mobiles, please check the specification.

iOS

- Bluetooth** **BLE** Bluetooth Low Energy
Communicates with iOS devices via BLE
Protects data communication with the encrypted AES 128-bit algorithm

Supported Products

FaceStation 2	BioStation A2	BioStation 2	BioStation L2	BioLite N2
Bluetooth NFC	NFC	NFC	NFC	Bluetooth NFC
BioEntry W2	Xpass S2	BioEntry P2	BioEntry R2	XPass D2
NFC	NFC	NFC	NFC	Bluetooth NFC

BioStar 2 License Policy

Access Control License

* BioStar 2.6.0 is applied

Item		Starter (free of charge)	Basic	Standard	Advanced	Professional	Enterprise
Users	Maximum No. of Cards per User	8	8	8	8	8	8
	Maximum No. of Fingerprints per User	10	10	10	10	10	10
	User Auto Sync	✓	✓	✓	✓	✓	✓
	Access-on-Card	✓	✓	✓	✓	✓	✓
	Security Credential Cards	✓	✓	✓	✓	✓	✓
	iCLASS Seos Card	✓	✓	✓	✓	✓	✓
	Inactivation User Reports	✓	✓	✓	✓	✓	✓
	Custom Field	✓	✓	✓	✓	✓	✓
Access Control	Maximum No. of Connected Devices	1,000	1,000	1,000	1,000	1,000	1,000
	No. of Doors	5	20	50	100	300	1,000
	Maximum No. of Access Levels	128	128	128	128	128	128
	Maximum No. of Access Groups	128	128	128	128	128	128
	Maximum No. of Access Groups per User	16	16	16	16	16	16
	Maximum No. of Doors per Access Level	128	128	128	128	128	128
	Access Group Auto Sync	✓	✓	✓	✓	✓	✓
Elevator Control	Maximum No. of Elevators	-	-	-	1,000	1,000	1,000
	Maximum No. of Floors per Elevator	-	-	-	192	192	192
	Maximum No. of Floor Levels	128	128	128	128	128	128
Zones	Anti-Passback	△(Door)	△(Door)	✓	✓	✓	✓
	Fire Alarm	-	-	✓	✓	✓	✓
	Schedule Lock/Unlock	-	-	✓	✓	✓	✓
	Guard Zone	-	-	✓	✓	✓	✓
	Interlock Zone	-	-	✓	✓	✓	✓
	Muster Zone	-	-	✓	✓	✓	✓
Advanced Features	Dashboard	✓	✓	✓	✓	✓	✓
	Cloud	-	-	✓	✓	✓	✓
	Server Matching	-	-	-	✓	✓	✓
	Audit Trail	✓	✓	✓	✓	✓	✓
	Daylight Saving Time	✓	✓	✓	✓	✓	✓
	Double mode	✓	✓	✓	✓	✓	✓
	No. of Mobile Cards	-	-	250	500	1,000	1,000+

Time & Attendance Management License

Item	Basic (free of charge)	Time & Attendance Management License
No. of Work Rules	Unlimited	Unlimited
No. of Schedules	1	Unlimited
No. of Users per Schedule	99	Unlimited
Shift Types	Fixed Shift and Flexible Shift	Fixed Shift and Flexible Shift
Calendar View	✓	✓

Video Log License

Item	Basic (free of charge)	Video License
Video Logs	-	✓

suprema
BIOMETRICS & SECURITY

Suprema Inc. Headquarters

14F Parkview Tower, 248, Jeongjail-ro, Bundang- gu, Seongnam-si, Gyeonggi-do, 13554, Rep. of KOREA

Tel: +82 31 783 4502 | Fax: +82 31 783 4503 | Inquiry: sales_sys@supremainc.com | www.supremainc.com

©2018 Suprema, Inc. Suprema and identifying product names and numbers herein are registered trademarks of Suprema, Inc. All non-Suprema brands and product names are trademarks or registered trademarks of their respective companies. Product appearance, build status and/or specifications are subject to change without notice. [ASB-180330-02-EN]