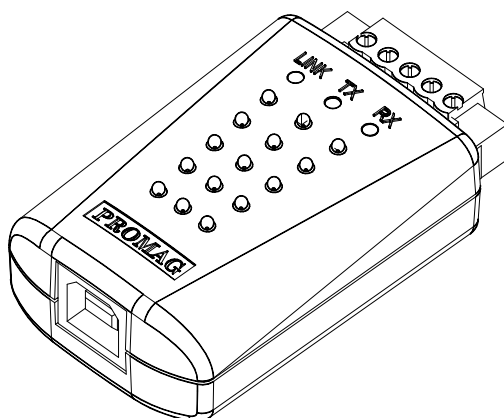
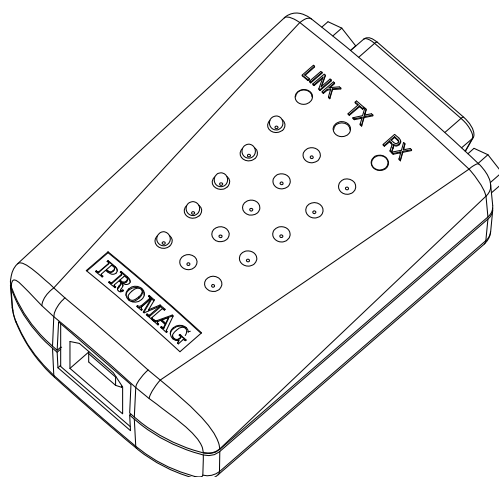


USB232B/422A/485A Series

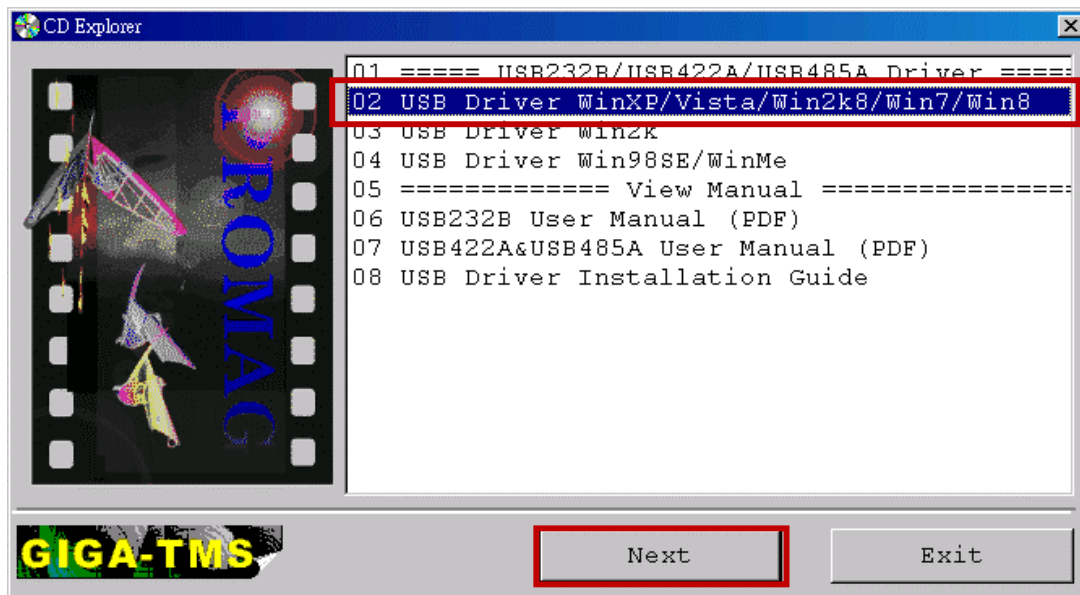


USB Driver Installation Guide (For Windows 8/ Windows 7/Vista/XP)

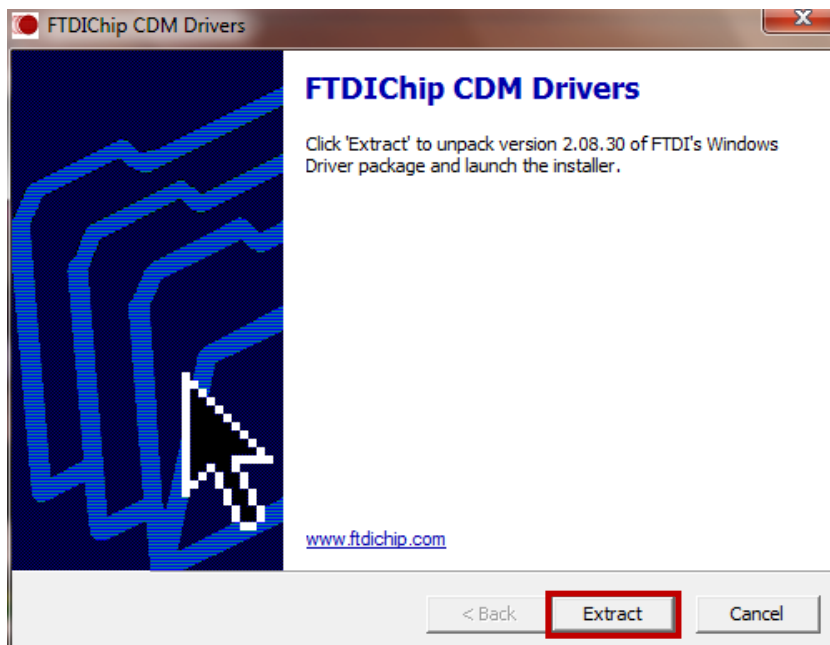
Installing USB Driver

You can follow the steps below to install the USB driver.

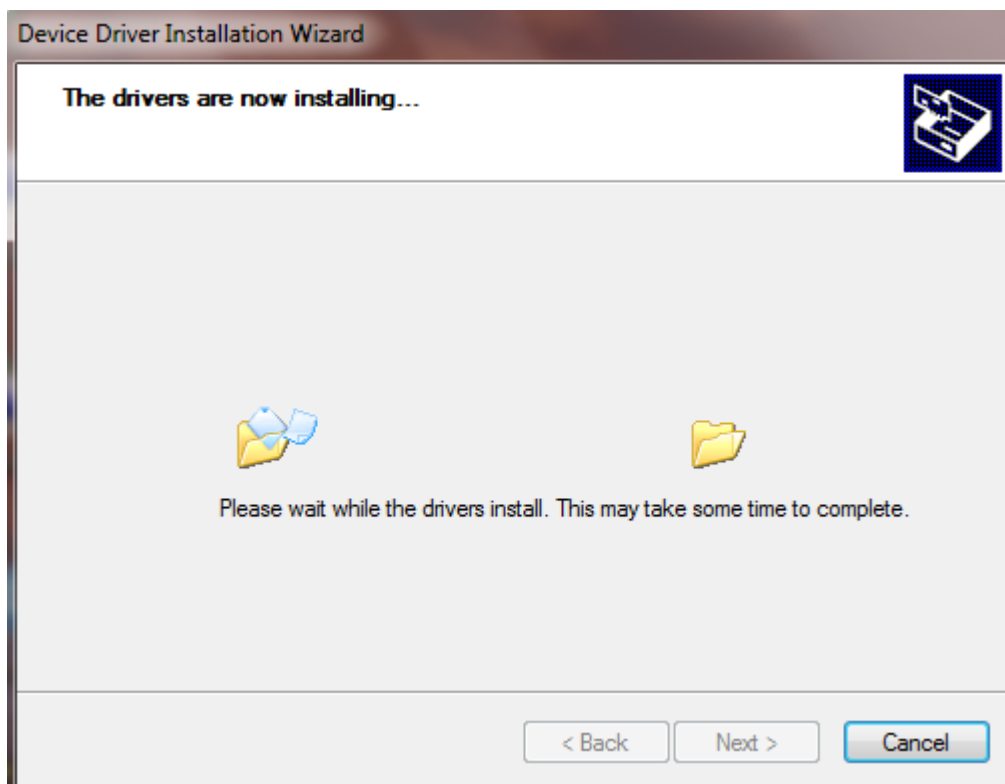
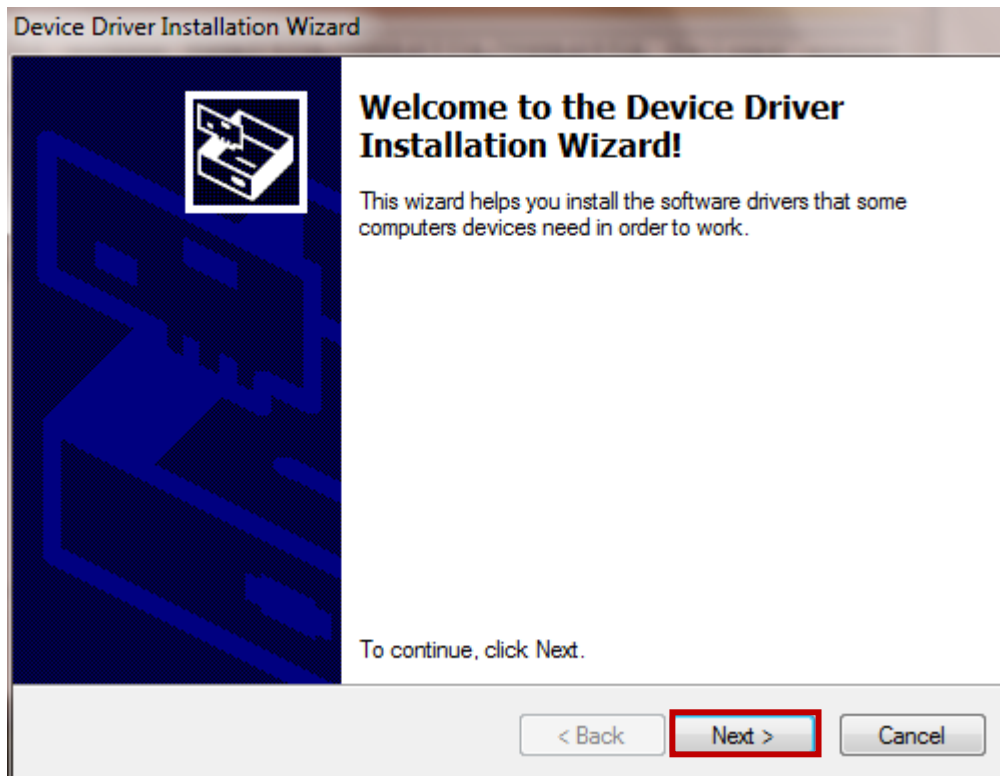
1. Do not connect USB232B/USB422A/USB485A with your computer.
2. Insert CD (Disk No. 5277) supplied with USB232B/USB422A/USB485A into CD/DVD ROM drive of your computer. The AutoRun window will show automatically.
3. Select [USB Driver for WinXP/Vista/Win2k8/Win7/Win8] and then click [Next].



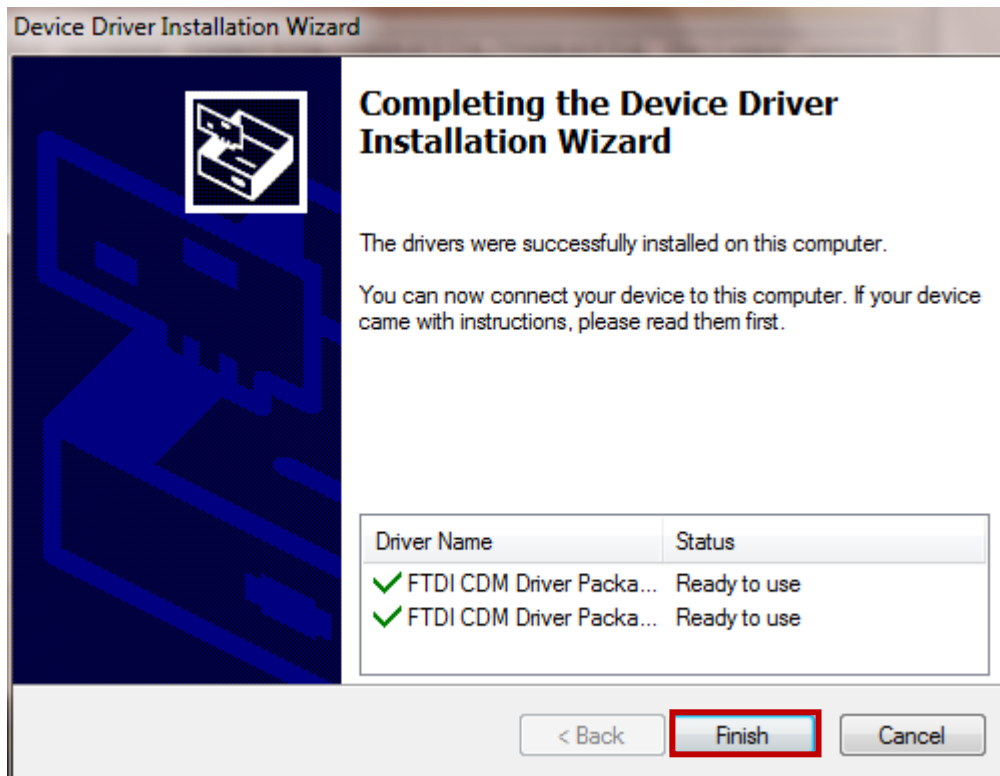
4. Click [Extract].



5. Click [Next]. The USB driver installation will start automatically.

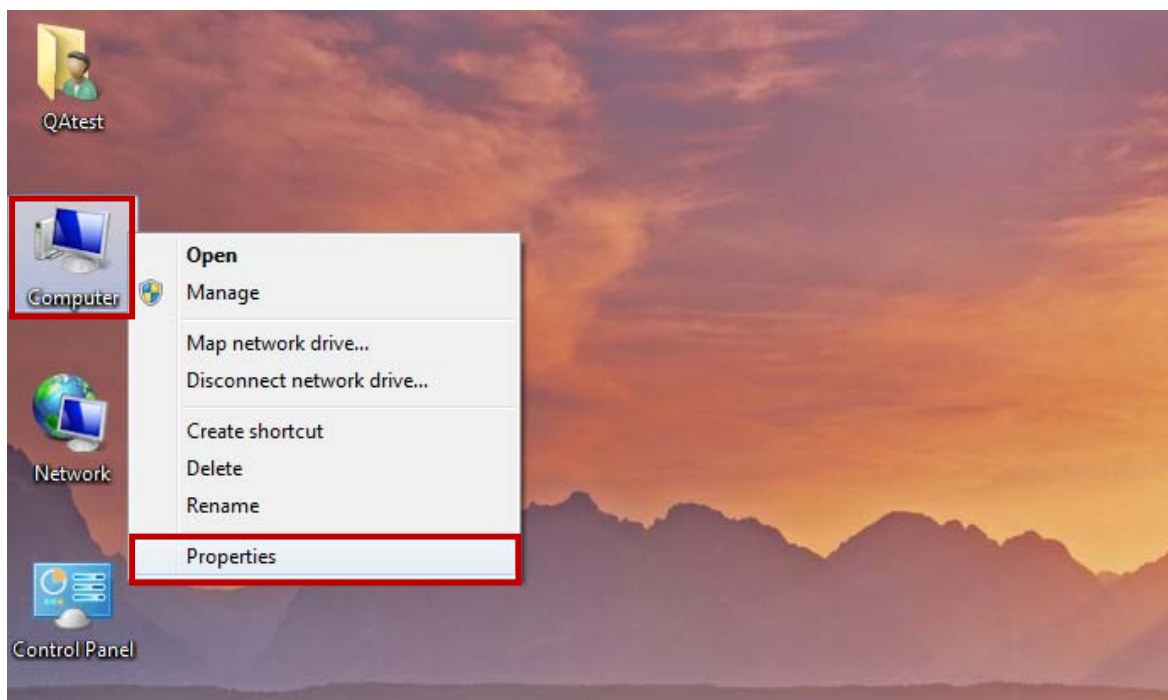


6. Once the USB driver installation is completed, click [Finish].

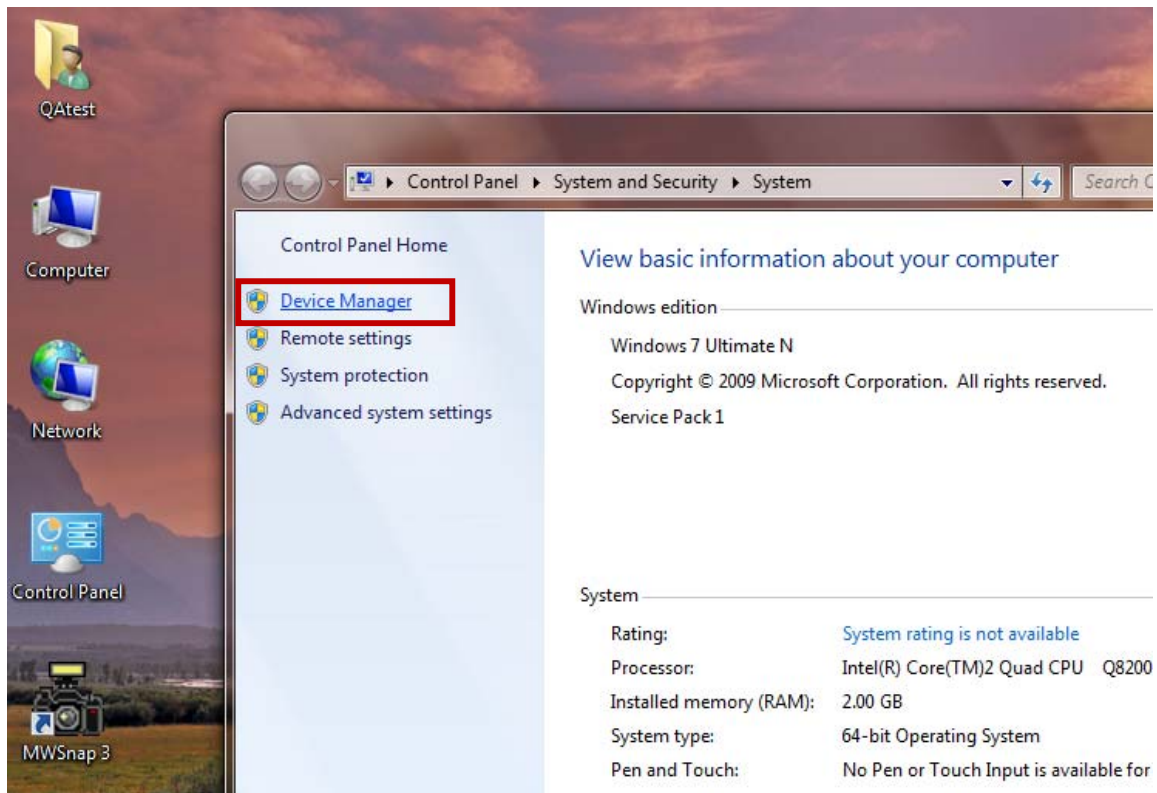


Note: If you want to check if the USB driver is installed in your computer correctly, you can refer to the following steps.

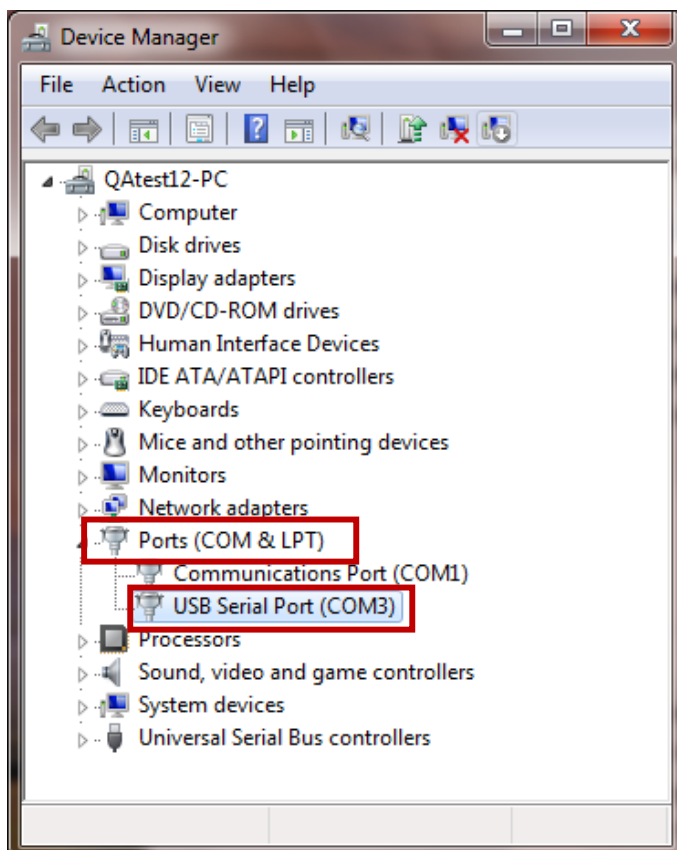
- (1) Connect USB232B/USB422A/USB485A with your computer.
- (2) Right-click [Computer] and then click [Properties].



(3) Click [Device Manager]. (If Windows OS of your computer is XP, please click [Hardware] and then click [Device Manager].)



(4) Click [Port (COM & LPT)]. If the driver is installed correctly, you will see “USB Serial Port (COM3)”.



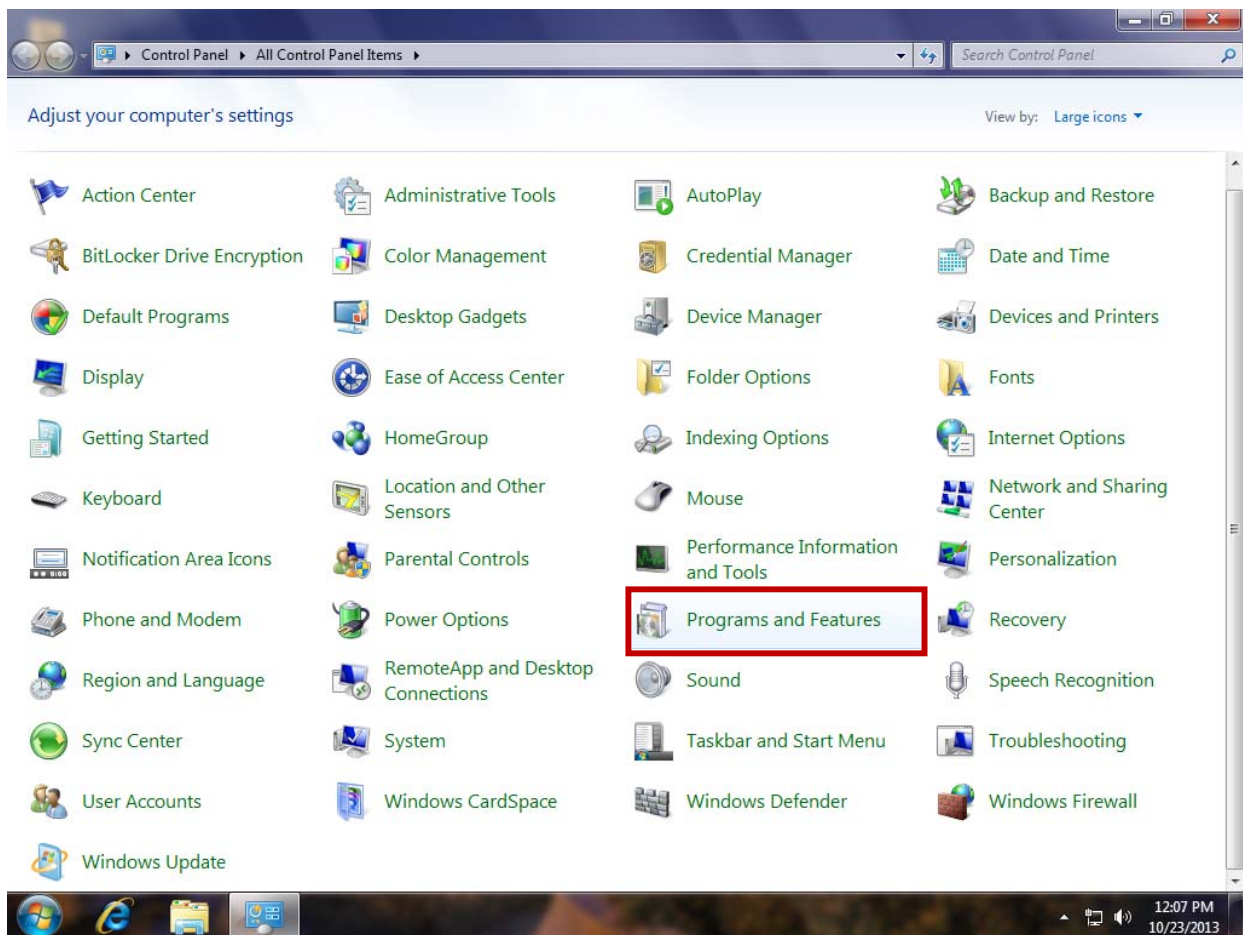
Uninstalling USB Driver

You can follow the steps below to uninstall the USB driver.

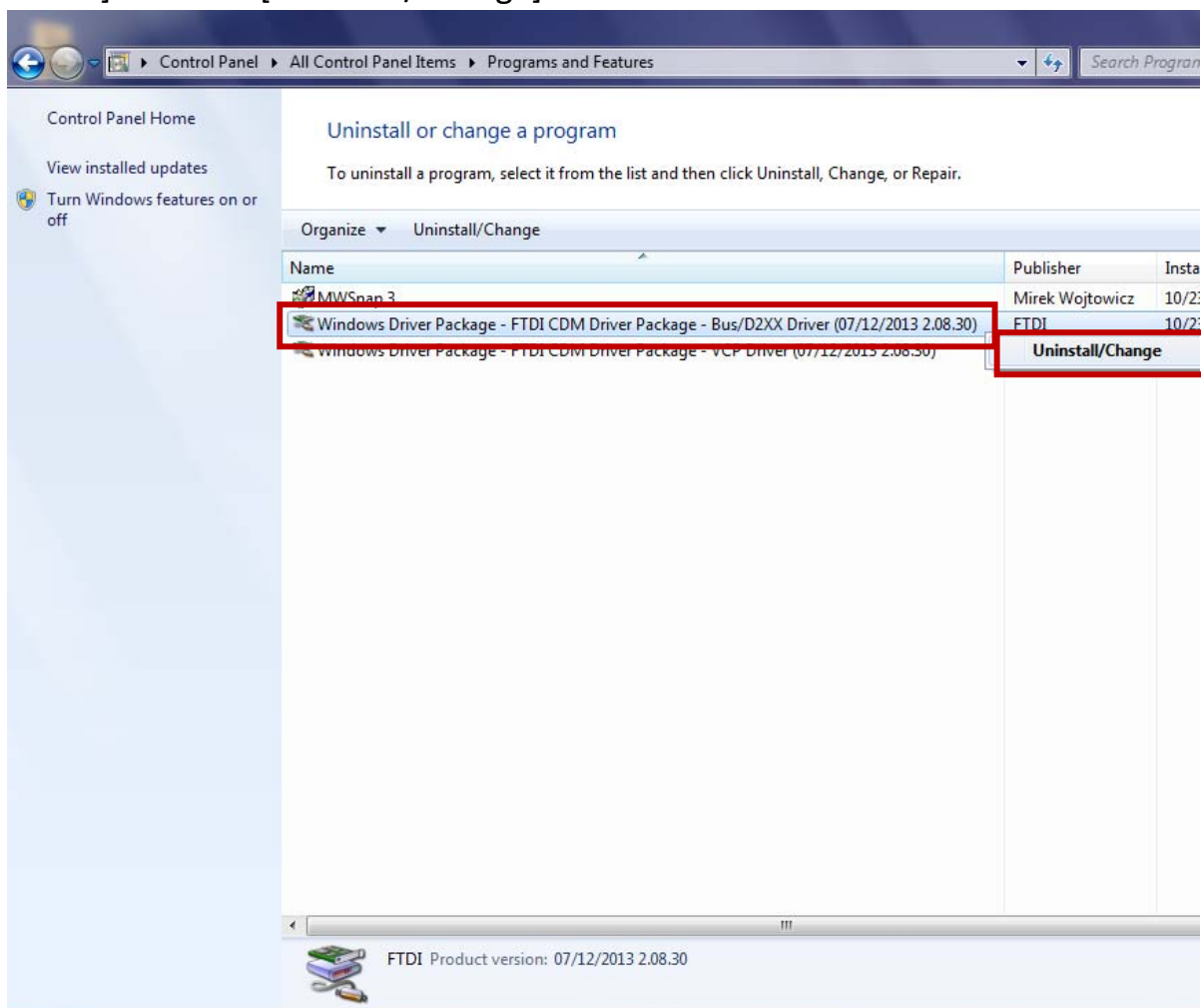
1. Do not connect USB232B/USB422A/USB485A with your computer.
2. Click [Start] and go to [Control Panel].



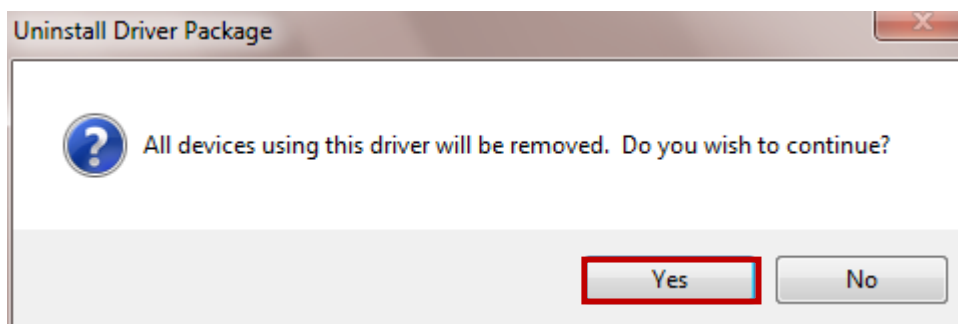
3. Click [Programs and Features]. (If Windows OS of your computer is XP, please click [Add or Remove Programs].)



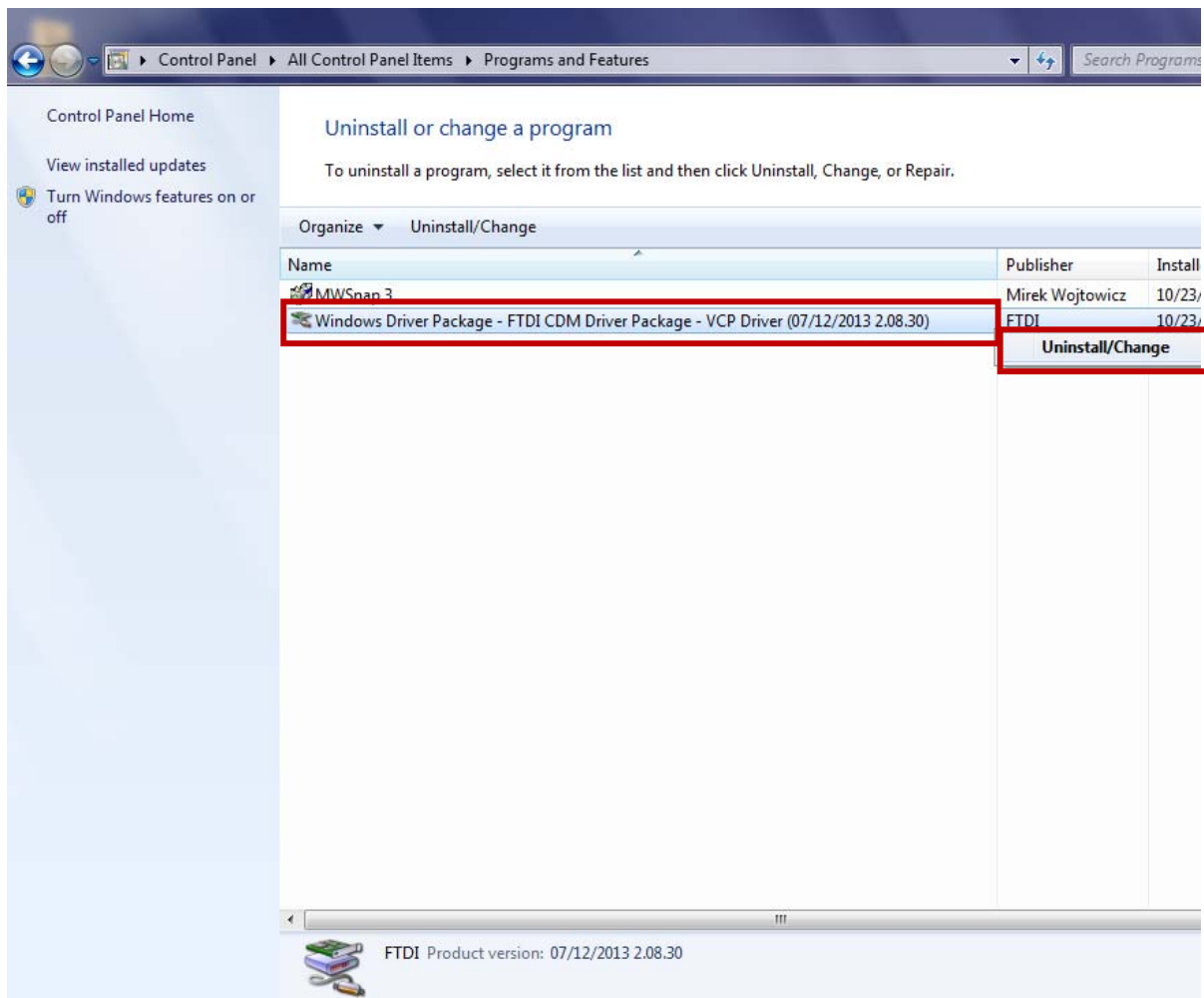
4. Right-click [Windows Driver Package – FTDI CDM Driver Package –Bus/D2XX Driver] and click [Uninstall/Change].



5. Click [Yes].



6. Right-click [Windows Driver Package – FTDI CDM Driver Package –VCP Driver] and click [Uninstall/Change].



7. FTDI driver has been removed completely.

