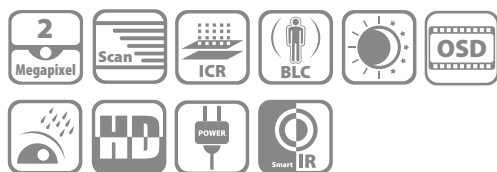


DS-2CC52D5S-IRM

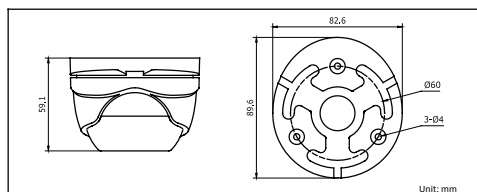
HD1080p IR Dome Camera



Key features

- 2 MP CMOS Image Sensor
- Full HD1080p Video Output
- True Day/Night
- Privacy Masking, Eclipse
- OSD Menu
- Up to 20m IR Distance
- IP66 Weatherproof

Dimensions



Accessories



Indoor/outdoor wall mount
DS-1272ZJ-110-TRS

DS-2CC52D5S-IRM	
Camera	
Image Sensor	1/3" Progressive Scan CMOS
Signal System	PAL/NTSC
Effective Pixels	1920(H)*1080(V)
Min. Illumination	0.01 Lux @(F1.2,AGC ON), 0 Lux with IR
Shutter Time	1/25 s to 1/50,000 s
Lens	3.6mm (2.8mm, 6mm optional)
	Angle of View: 80.9°(3.6mm), 103.5°(2.8mm), 54.3°(6mm)
Lens Mount	M12
Angle Adjustment	Pan: 0 - 360°, Tilt: 0 - 90°, Rotation: 0 - 360°
Day & Night	ICR
Synchronization	Internal synchronization
Video Frame Rate	1080p@25fps/1080p@30fps
HD Video Output	SMPTE292M (HD-SDI)
CVBS Output	1Vp-p Composite Output(75Ω/BNC)
S/N Ratio	More than 52dB
Menu	
Camera ID	On/off (15 characters, position programmable)
AGC	Support
D/N Mode	Color/BW/EXT
White Balance	ATW, AWC-SET, Indoor, Outdoor, Manual
Privacy Mask	On/Off, maximum 8 zones
Motion Detection	On/Off, maximum 4 zones
BLC	Support
Anti-flicker	On/off
Language	English, Japanese, CHN1, CHN2, Korean, German, French, Italian, Spanish, Polish, Russian, Portuguese, Dutch, Turkish, Hebrew and Arabic
Functions	Eclipse, Digital noise reduction, Digital zoom(62x), Slow shutter, Mirror, Defog, Defect pixel correction, SMART D-ZOOM
General	
Working Temperature/Humidity	-10 °C - 60 °C (14 °F - 140 °F) Humidity 90% or less (non-condensing)
Power Supply	12V DC±10%
Power Consumption	Max. 5W
Weather Proof Ratings	IP66
IR Range	20 meters
Dimension	89.6 × 59.1 mm (3.53" × 2.33")
Weight	400 g (0.88 lb)

Order models

DS-2CC52D5S-IRM