

**Diagram References**

**1 Appearance**

- ① Light
- ② Camera
- ③ Microphone
- ④ Screen
- ⑤ Card Reader Area
- ⑥ Card Reading & Fingerprint Recognition Area
- ⑦ TAMPER

Note: The appearance of the device vary according to different model. Refers to the actual device.

**2 Terminal**

- DC 12 V: Power Input
- AO1+/AO1- : Alarm Relay Output 1
- AO2+/AO2- : Alarm Relay Output 2
- NC1/NC2 : Door Lock Relay Output (NC)
- NO1/NO2 : Door Lock Relay Output (NO)
- COM1/COM2: Common Interface
- AI1/AI2/AI3: Alarm Input
- GND: Grounding
- 485-: RS-485 Communication Terminal
- 485+: RS-485 Communication Terminal
- TAMP: Wiegand Card Reader TAMPER
- OK: Card Reader Indicator Output (Valid)
- ERR: Card Reader Indicator Output (Invalid)
- BZ: Card Reader Buzzer Output
- W0: Data Input Interface Wiegand Card Reader
- W1: Data Input Interface Wiegand Card Reader
- 12 V: Power Supply Output

Note: Wiring description refers to the User Manual.

**3 Installation**

- Before you begin:
- Accessories that you need to prepare for installation: Junction box and mounting template.
  - Make sure the power supply meet the power requirements of the door station (12 VDC, 2 A).
  - Make sure all the related equipment is power-off during the installation.
  - Wire the cables before installation.

**★ Accessory (Sales separately)**

- The dimension of the junction box is: 406.7 mm(W) × 174.8 mm(H) × 44 mm(D).
- The installation hole should be larger than junction box. The suggested dimension of the installation hole is 407.5mm(W) × 175.5(H) × 44.5(D) mm.

Note: ask our technique supports and sales and purchase DS-KABD9613-G junction box.

**★ Flush Mounting**

- Drill an installation hole on the wall.
- Note: The suggested size of hole is 407.5mm(W) × 175.5(H) × 44.5(D) mm.
- Insert the junction box to the wall. Secure the junction and the wall with 4 supplied screws.
- Insert the door station to the junction box.
- Fix the door station with the set screw.

**4 Configuration**

**1 Activate Device**

You are required to activate the device first by setting a strong password for it before you can use the device.

- Power on the device to enter the activation page automatically.
- Create a password and confirm it.
- Tap OK to activate the door station.

**2 Edit Network Parameters**

Set the network parameters of the door station and linked devices.

- Tap Call/Open to enter the calling page.
- Enter #777, and tap unlock icon to pop up the dialog box.
- Enter the admin password, and tap OK to enter the settings page.
- Note: The default admin password of the device is 888999.
- Tap Network Settings.
- Edit IP address, Subnet Mask, Gateway, SIP IP, Master Station IP and Center IP according to your needs.
- Tap < on the top left of the page to save the settings.

**3 Set Door Station No.**

The door station No., is composed of the community No., bulding No., unit No., floor No. and room No.

- Tap Call/Open to enter the calling page.
- Enter #777, and tap unlock icon to pop up the dialog box.
- Enter the admin password, and tap OK to enter the settings page.
- Note: The default admin password of the device is 888999.
- Tap Local Settings.
- Set project No., bulding No., unit No. and floor No.
- Set No. for sub door station.
- Tap < on the top left of the page to save the settings.

Note: The default admin password of the device is 888999.

**4 User Management**

- Tap Call/Open to enter the calling page.
- Enter #777, and tap unlock icon to pop up the dialog box.
- Enter the admin password, and tap OK to enter the settings page.
- Note: The default admin password of the device is 888999.
- Tap User Management. Swipe the main card or enter the user's password.
- Add user's parameters according to the notice on the page.
- Set Room No.
- Add card, face, fingerprint for the user.
- Select User Type.
- Tap V to save the settings.

Note: The page may vary according to different device models. Refers to the actual page for details.

**5 Call Resident**

- Call from Main/Sub Door Station
- Tap Call/Open, enter the room No. and press the call button.
- Call from Outer Door Station
- Tap Call/Open, enter community No. + bulding No. + # + unit No. + # + room No. and press call button.

**6 Unlock Door**

The device support unlock the door by swiping card, entering password, scanning QR code, and fingerprint.

Here takes unlock by entering password and unlock by swiping card for example.

Note: You should create the password and add the card to the device first.

Unlock by Entering Password

● Normal Password

Tap Call/Open, enter # + room No. + password and press the unlock button.

Note: By default, the password is 123456.

● Public Password

Note: Create the public password via IVMS-4200 Client Software remotely first.

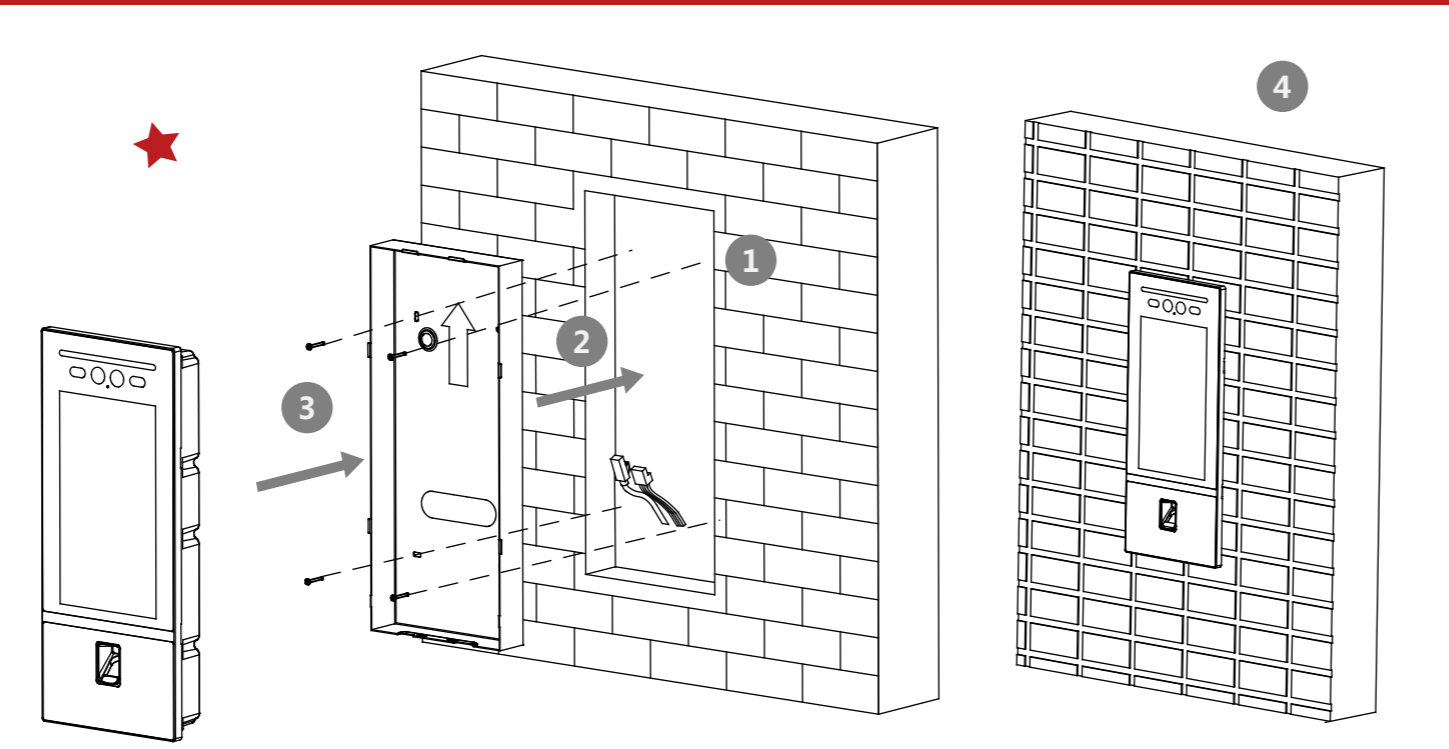
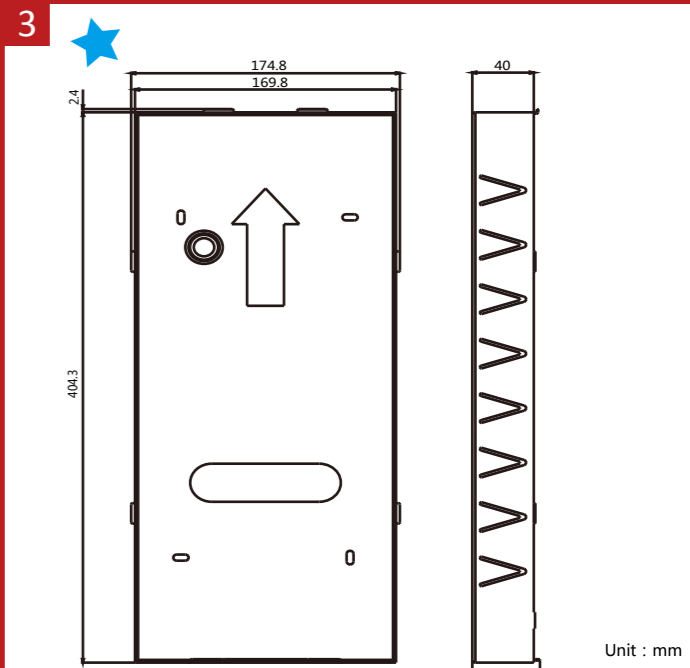
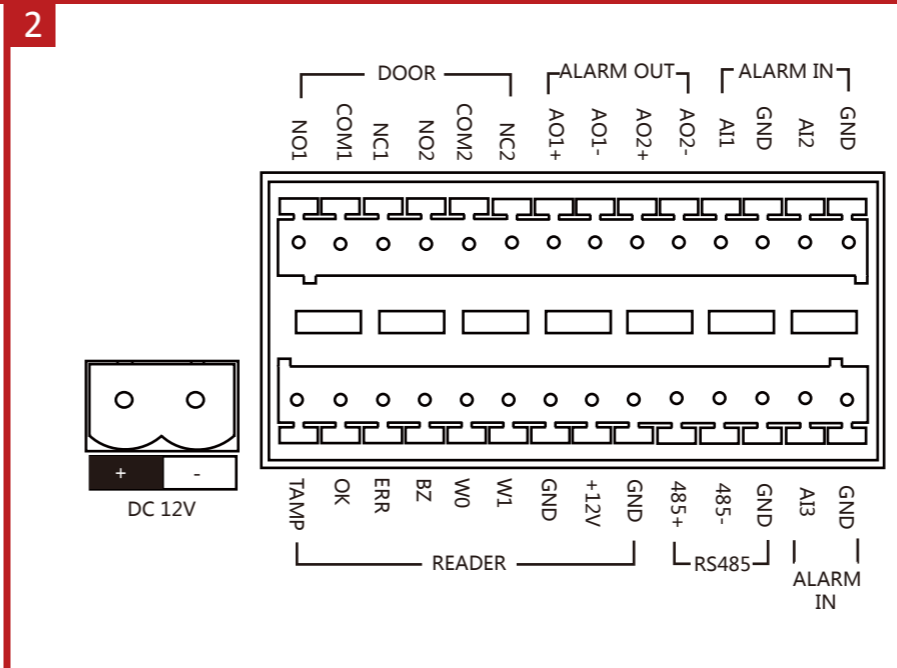
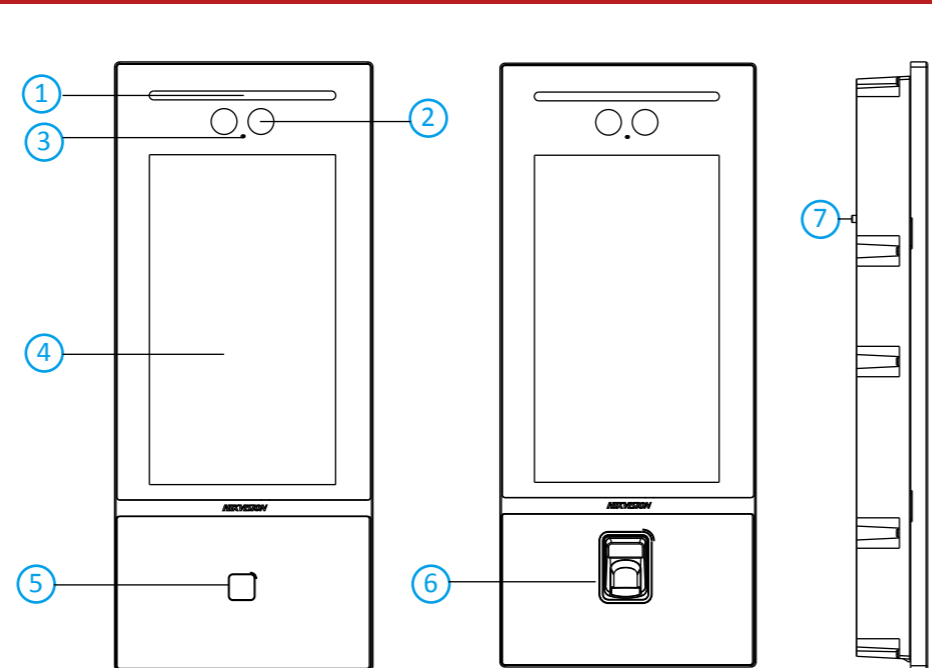
Tap Call/Open, enter # + public password and press the unlock button.

Unlock by Swiping Card

Present the card on the card reading area to unlock the door.

Note: The door station can be configured via IVMS-4200 Client Software.

★ Refer to Video Intercom Face Recognition Door Station User Manual (scan the QR code) for details.



**Safety Instruction**

**Warnings**

- All the electronic operation should be strictly compliance with the electrical safety regulations, fire prevention regulations and other related regulations in your local region.
- Please use the power adapter, which is provided by normal company. The power consumption cannot be less than the required value.
- Do not connect several devices to one power adapter as adapter overload may cause over-heat or fire hazard.
- Please make sure that the power has been disconnected before you wire, install or dismantle the device.
- When the product is installed on wall or ceiling, the device shall be firmly fixed.
- If smoke, odors or noise rise from the device, turn off the power at once and unplug the power cable, and then please contact the service center.
- If the product does not work properly, please contact your dealer or the nearest service center. Never attempt to disassemble the device yourself. (We shall not assume any responsibility for problems caused by unauthorized repair or maintenance.)

**Cautions**

- Do not drop the device or subject it to physical shock, and do not expose it to high electromagnetic radiation. Avoid the equipment installation on vibrations surface or places subject to shock (ignoring can cause equipment damage).
- Do not place the device in extremely hot (refer to the specification of the device for the detailed operating temperature), cold, dusty or damp locations, and do not expose it to high electromagnetic radiation.
- The device cover for indoor use shall be kept from rain and moisture.
- Exposing the equipment to direct sun light, low ventilation or heat source such as heater or radiator is forbidden (ignoring can cause fire danger).
- Do not aim the device at the sun or extra bright places. A blooming or smear may occur otherwise (which is not a malfunction however), and affecting the endurance of sensor at the same time.
- Please use the provided glove when open up the device cover, avoid direct contact with the device cover, because the acidic sweat of the fingers may erode the surface coating of the device cover.
- Please use a soft and dry cloth when clean inside and outside surfaces of the device cover, do not use alkaline detergents.
- Please keep all wrappers after unpack them for future use. In case of any failure occurred, you need to return the device to the factory with the original wrapper. Transportation without the original wrapper may result in damage on the device and lead to additional costs.
- Improper use or replacement of the battery may result in hazard of explosion. Replace with the same or equivalent type only. Dispose of used batteries according to the instructions provided by the battery manufacturer.

**Consignes de sécurité**

**Avertissements :**

- Tous les éléments électroniques doivent respecter à la lettre la réglementation locale sur la sécurité des installations électriques, sur la prévention des incendies et des réglementations connexes en vigueur.
- Utilisez un adaptateur fourni par une entreprise agréée. La consommation électrique ne doit pas être inférieure à la valeur exigée.
- Ne branchez pas plusieurs appareils sur un même adaptateur: toute surcharge de l'adaptateur pouvant entraîner sa surchauffe ou provoquer un incendie.
- Veillez à bien déconnecter la source d'alimentation avant de câbler, installer ou démonter l'appareil.
- Lors de l'installation au mur ou au plafond, assurez-vous que l'appareil est bien fixé.
- Si l'appareil dégage de la fumée ou une odeur suspecte, ou s'il émet des bruits inhabituels, éteignez-le et débranchez le câble d'alimentation, puis contactez le SAV.
- Si le produit ne fonctionne pas correctement, contactez votre revendeur ou le SAV le plus proche. Vous ne devez en aucun cas essayer de démonter le produit vous-même. (Nous déclinons toute responsabilité en cas de problèmes découlant d'une intervention ou d'une réparation effectuée sans autorisation.)

**Précautions**

- Évitez de faire tomber l'appareil, de le heurter et de l'exposer à des rayonnements électromagnétiques de forte intensité. Évitez d'installer l'équipement sur des surfaces vibrantes ou à des emplacements subissant des chocs fréquents (au risque de l'endommager).
- N'installez pas l'appareil à un emplacement trop chaud ou trop froid (reportez-vous à la spécification de l'appareil pour connaître la température de fonctionnement précise), poussiéreux ou humide. Ne l'exposez pas non plus à des rayonnements électromagnétiques élevés.
- Le capot de l'appareil pour installation intérieure ne doit pas être exposé à la pluie, ni à l'humidité.
- Il est formellement interdit d'exposer l'équipement directement au soleil, à un environnement mal ventilé ou à une source de chaleur telle qu'une chaudière ou un radiateur (au risque de provoquer un incendie).
- N'orientez pas l'appareil vers le soleil ou des sources de lumière très vive. Dans le cas contraire, un voile ou des traînées risquent de se former (ce qui ne constitue toutefois pas un dysfonctionnement) et la résistance du capteur peut également être affectée.
- Utilisez le gant fourni pour ouvrir le capot du dôme et évitez tout contact direct avec celui-ci, l'acidité de la sudation des doigts pouvant éroder le revêtement du capot de l'appareil.
- Utilisez un chiffon doux et sec pour nettoyer les surfaces intérieures et extérieures du capot de l'appareil. N'utilisez pas de détergents alcalins.
- Conservez tous les emballages ; ils pourront vous servir ultérieurement. En cas de panne, remoyez l'appareil à l'usine dans son emballage d'origine. Si l'appareil est transporté hors de son emballage d'origine, il risque d'être abîmé, entraînant des frais supplémentaires.
- Une mauvaise utilisation de la batterie ou un remplacement erroné peut entraîner un risque d'explosion. Ne la remplacez que par une batterie identique ou de type équivalent. Mettez les batteries usagées au rebut conformément aux instructions du fabricant.

**Product Information**

©2019 Hangzhou Hikvision Digital Technology Co., Ltd. It includes instructions on how to use the Product. The software embodied in the Product is governed by the user license agreement covering that Product.

About this Manual  
 This Manual is subject to domestic and international copyright protection. Hangzhou Hikvision Digital Technology Co., Ltd. ("Hikvision") reserves all rights to this manual. This manual cannot be reproduced, changed, translated, or distributed, partially or wholly, by any means, without the prior written permission of Hikvision.

Trademarks  
**HIKVISION** and other Hikvision marks are the property of Hikvision and are registered trademarks or the subject of applications for the same by Hikvision and/or its affiliates. Other trademarks mentioned in this manual are the properties of their respective owners. No right of license is given to use such trademarks without express permission.

Legal Disclaimer  
 TO THE MAXIMUM EXTENT PERMITTED BY APPLICABLE LAW, THE PRODUCT DESCRIBED, WITH ITS HARDWARE, SOFTWARE AND FIRMWARE, IS PROVIDED "AS IS", WITH ALL FAULTS AND ERRORS, AND HIKVISION MAKES NO WARRANTIES, EXPRESS OR IMPLIED, INCLUDING WITHOUT LIMITATION, MERCHANTABILITY, SATISFACTORY QUALITY, FITNESS FOR A PARTICULAR PURPOSE, AND NON-INFRINGEMENT OF THIRD PARTY. IN NO EVENT WILL HIKVISION, ITS DIRECTORS, OFFICERS, EMPLOYEES, OR AGENTS BE LIABLE TO YOU FOR ANY SPECIAL, CONSEQUENTIAL, INCIDENTAL, OR INDIRECT DAMAGES, INCLUDING, AMONG OTHERS, DAMAGES FOR LOSS OF BUSINESS PROFITS, BUSINESS INTERRUPTION, OR LOSS OF DATA OR DOCUMENTATION, IN CONNECTION WITH THE USE OF THIS PRODUCT, EVEN IF HIKVISION HAS BEEN ADVISED OF THE POSSIBILITY OF SUCH DAMAGES.

REGARDING TO THE PRODUCT WITH INTERNET ACCESS, THE USE OF PRODUCT SHALL BE WHOLLY AT YOUR OWN RISKS. HIKVISION SHALL NOT TAKE ANY RESPONSIBILITIES FOR ABNORMAL OPERATION, PRIVACY LEAKAGE OR OTHER DAMAGES RESULTING FROM CYBER ATTACK, HACKER ATTACK, VIRUS INSPECTION, OR OTHER INTERNET SECURITY RISKS; HOWEVER, HIKVISION WILL PROVIDE TIMELY TECHNICAL SUPPORT IF REQUIRED.

SURVEILLANCE LAWS VARY BY JURISDICTION. PLEASE CHECK ALL RELEVANT LAWS IN YOUR JURISDICTION BEFORE USING THIS PRODUCT IN ORDER TO ENSURE THAT YOUR USE CONFORMS THE APPLICABLE LAW. HIKVISION SHALL NOT BE LIABLE IN THE EVENT THAT THIS PRODUCT IS USED WITH ILLEGITIMATE PURPOSES.

IN THE EVENT OF ANY CONFLICTS BETWEEN THIS MANUAL AND THE APPLICABLE LAW, THE LATER PREVAILS.

**Data Protection**  
 During the use of device, personal data will be collected, stored and processed. To protect data, the development of Hikvision devices incorporates privacy by design principles. For example, for device with facial recognition features, biometrics data is stored in your device with encryption method; for fingerprint device, only fingerprint template will be saved, which is impossible to reconstruct a fingerprint image.

As data controller, you are advised to collect, store, process and transfer data in accordance with the applicable data protection laws and regulations, including without limitation, conducting security controls to safeguard personal data, such as, implementing reasonable administrative and physical security controls, conduct periodic reviews and assessments of the effectiveness of your security controls.

**Regulatory Information**

**FCC Information**  
 Please take attention that changes or modification not expressly approved by the party responsible for compliance could void the user's authority to operate the equipment.

FCC compliance: This equipment has been tested and found to comply with the limits for a Class B digital device, pursuant to part 15 of the FCC Rules. These limits are designed to provide reasonable protection against harmful interference in a residential installation. This equipment generates, uses and can radiate radio frequency energy and, if not installed and used in accordance with the instructions, may cause harmful interference to radio communications. However, there is no guarantee that interference will not occur in a particular installation. If this equipment does cause harmful interference to radio or television reception, which can be determined by turning the equipment off and on, the user is encouraged to try to correct the interference by one or more of the following measures:

- Reorient or relocate the receiving antenna.
- Increase the separation between the equipment and receiver.
- Connect the equipment into an outlet on a circuit different from that to which the receiver is connected.
- Consult the dealer or an experienced radio/TV technician for help.

FCC Conditions  
 This device complies with part 15 of the FCC Rules. Operation is subject to the following two conditions:  
 1. This device may not cause harmful interference.  
 2. This device must accept any interference received, including interference that may cause undesired operation.

CE  
 This product and - if applicable - the supplied accessories too are marked with "CE" and comply therefore with the applicable harmonized European standards listed under the RE Directive 2014/53/EU, the EMC Directive 2014/30/EU, the LVD Directive 2014/35/EU, the RoHS Directive 2011/65/EU

2012/19/EU (WEEE directive): Products marked with this symbol cannot be disposed of as unsorted municipal waste in the European Union. For proper recycling, return this product to your local supplier upon the purchase of equivalent new equipment, or dispose of it at designated collection points. For more information see: www.recycle-this.info

2006/66/EC (battery directive): This product contains a battery that cannot be disposed of as unsorted municipal waste in the European Union. See the product documentation for specific battery information. The battery is marked with this symbol, which may include lettering to indicate cadmium (Cd), lead (Pb), or mercury (Hg). For proper recycling, return the battery to your supplier or to a designated collection point. For more information see: www.recyclethis.info

