

HYPERION

WHITE LIGHT LED ILLUMINATOR



Energy Saving



Cable Management



Easy Angle Adjusting



IP66
IP67

Water Proof



No External PSU



Maintenance Free



Vandal Proof

High Performances

The latest smt led technology dare high performance and low power consumption

Adjustable angle aim point

The innovative beam angle calibration system permits a fine and accurate aim point

Integrated power supply

The integrated constant current power supply allows a quick and easy installation without external box

Moulded full Aluminium body

The sturdy Aluminium body and cable management guarantees vandalproof performances as well as heat dissipation



tekno system[®]
Italian design for CCTV since 1979

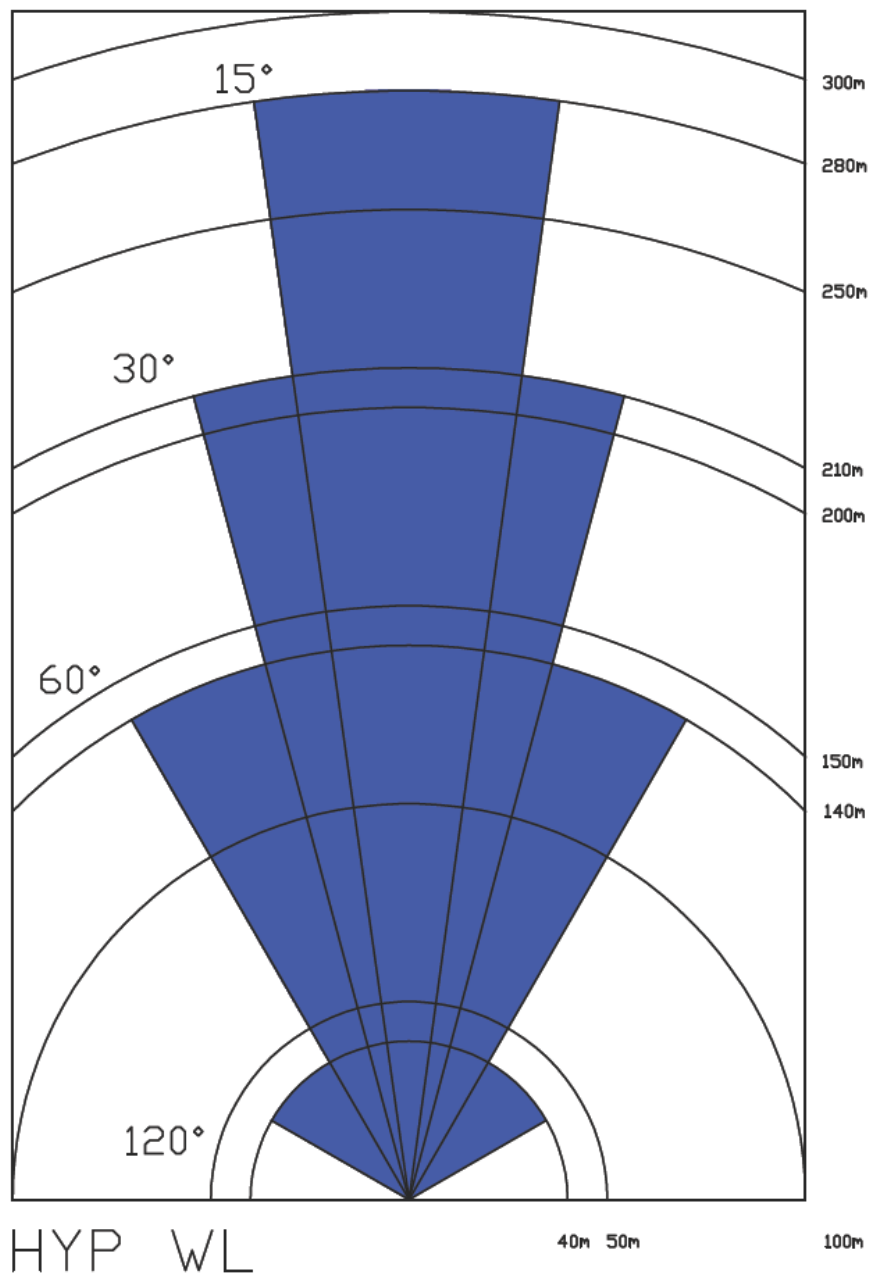
Tekno System S.p.A.
Via Rostoncello, 1 - 36010 Carrè - Italy
Phone: +39 0445 314324 | Fax: +39 0445 314319
Email: info@teknoystem.eu | Web: www.teknoystem.eu

rev. 111110

Page 1 / 4

MODELS

ORDER CODE	Beam Angle	Max Distance		IP Rate	Power supply	Cable Management
HYP 15 WL	15°	280 m	(306 yd)	IP66/67	Internal 230 VAC	●
HYP 30 WL	30°	210 m	(230 yd)	IP66/67	Internal 230 VAC	●
HYP 60 WL	60°	140 m	(153 yd)	IP66/67	Internal 230 VAC	●
HYP 120 WL	120°	40 m	(44 yd)	IP66/67	Internal 230 VAC	●
HYP 15 WL LV	15°	280 m	(306 yd)	IP66/67	Internal 12-24VAC/DC	●
HYP 30 WL LV	30°	210 m	(230 yd)	IP66/67	Internal 12-24VAC/DC	●
HYP 60 WL LV	60°	140 m	(153 yd)	IP66/67	Internal 12-24VAC/DC	●
HYP 120 WL LV	120°	40 m	(44 yd)	IP66/67	Internal 12-24VAC/DC	●







tekno system[®]
Italian design for CCTV since 1979

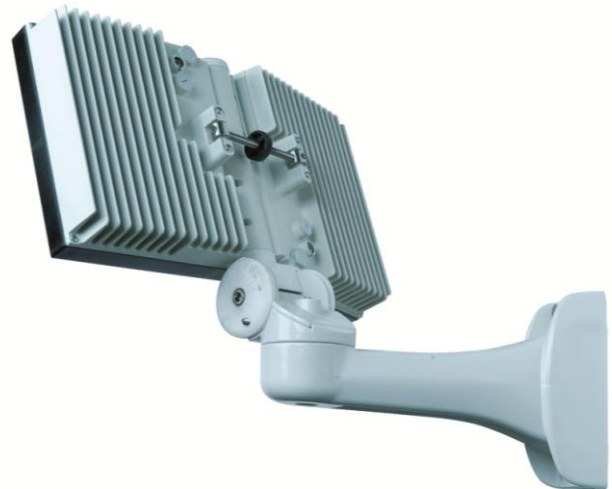
Tekno System S.p.A.
Via Rostoncello, 1 - 36010 Carrè - Italy
Phone: +39 0445 314324 | Fax: +39 0445 314319
Email: info@teknoystem.eu | Web: www.teknoystem.eu

rev. 111110

Page 2 / 4

RELATED PRODUCTS

PA/1	Pole mount adapter for one bracket	
PA/2	Pole mount adapter for two brackets	
CM	Corner mount adapter	
CR2	Photocell switch with adjustable threshold	



SPECIFICATION

General

- High efficiency SMT Leds
- PC optical beam collimator
- Typ. Color temperature: 6500 K
- luminous flux: about 2600 lumen
- Aluminium die cast molding and Technopolymers
- Radiant body for optimal thermal yield

Mechanical

- Dimensions: 344 x 356 x 75 mm
- Weight: 3,9 Kg
- Angle adjustable:
Pan +10°/-30° (each module)
Tilt +45°/-15°
- Beam Pattern: see table

Electrical

- Power supply: Internal 230 VAC
Internal 12-24VAC/DC (LV version)
- Power: 34 W

Environmental

- Indoor / Outdoor applications
- IP66 and IP67 weatherproof rating (EN60529)
- Temperature Range : -50°C to 50°C
- RoHS compliant
- CE



tekno system[®]
Italian design for CCTV since 1979

Tekno System S.p.A.
Via Rostoncello, 1 - 36010 Carrè – Italy
Phone: +39 0445 314324 | Fax: +39 0445 314319
Email: info@teknosystem.eu | Web: www.teknosystem.eu

rev. 111110

Page 3 / 4

