



## **How to Use Camera Rule as a Zone in Ax Hybrid Pro 2.0&AxPro 1.3.1**

<b>Title:</b>	How to Use Camera Rule& Event in Ax Hybrid Pro 2.0/AxPro 1.3.1	<b>Version:</b>	Hybrid Pro 2.0/AxPro 1.3.1	<b>Date:</b>	10/06/2025
<b>Product:</b>	Hybrid Pro 2.0/Ax Pro, IPC			<b>Page:</b>	1 of 4

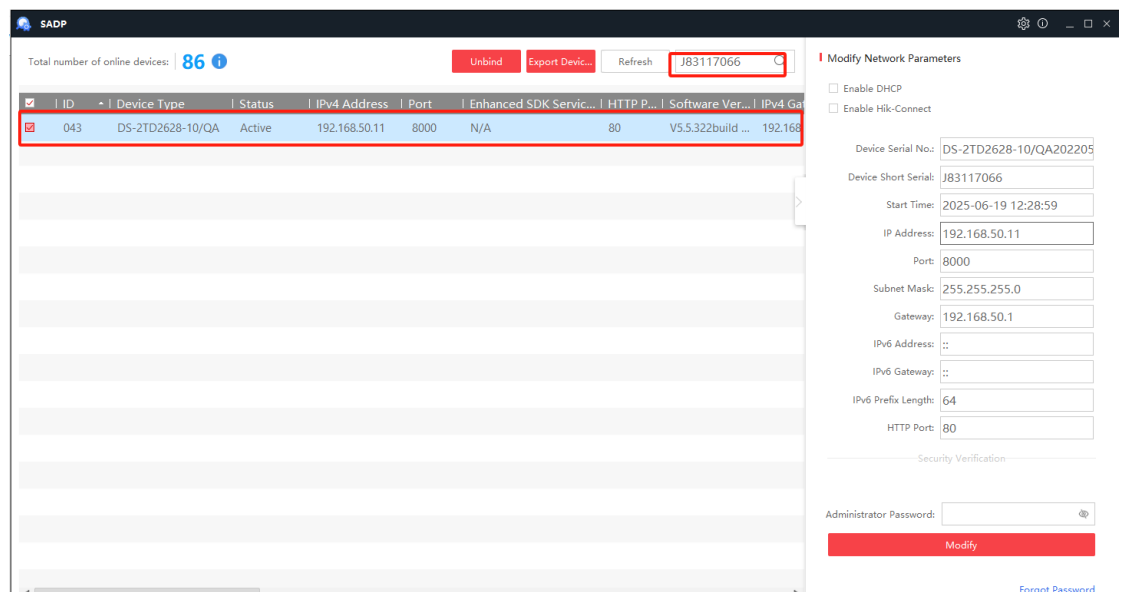
## Preparation

1. Ax Hybrid Control Panel DS-PA502-64/96/128(V2.1.1build250619) Or Ax Pro Control Panel DS-PWA64/96-WE(V1.3.1build250528)
2. IPC: DS-2TD2628-10/QA V5.5.322build250116
3. SADP

## How to Use Camera Rule as a Zone in Ax Hybrid Pro 2.0&AxPro 1.3.1

### 1. Configure the IPC settings on Web

- 1) Once the IPC is online, search for the SN number of IPC on SADP to find the address and double click it to enter the configuration page.

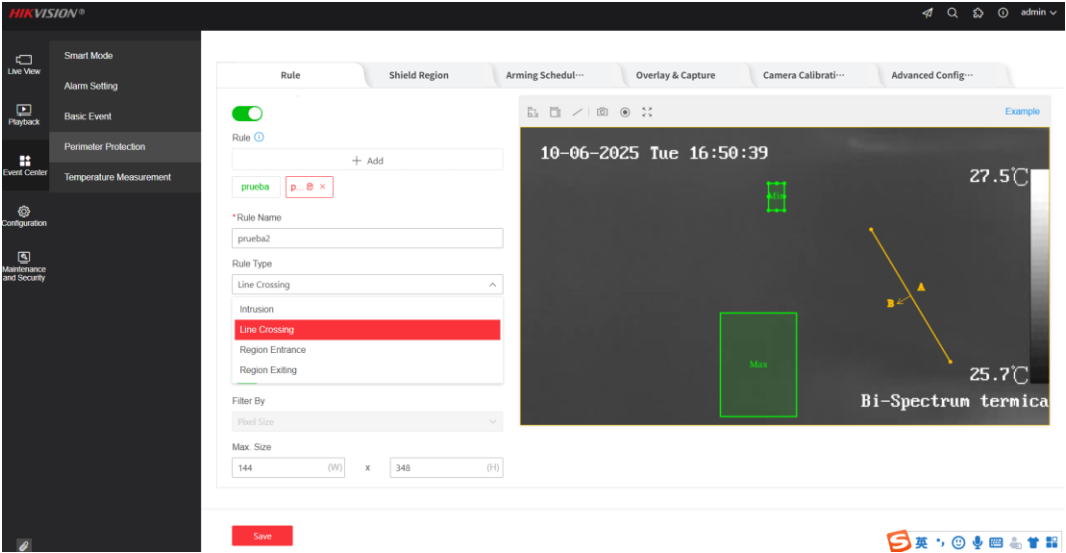


- 2) login in with user name and password.

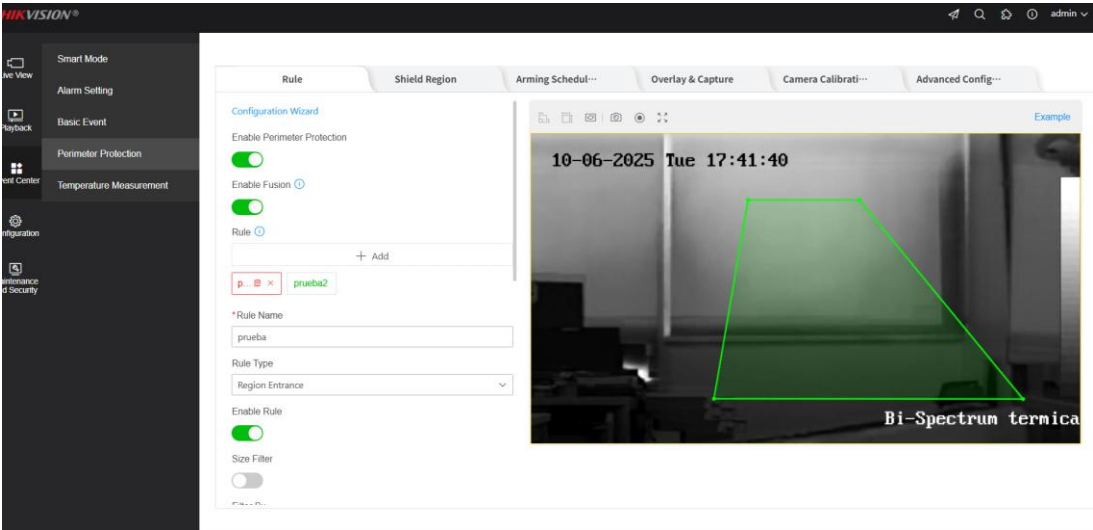
<b>Title:</b>	How to Use Camera Rule& Event in Ax Hybrid Pro 2.0/AxPro 1.3.1	<b>Version:</b>	Hybrid Pro 2.0/AxPro 1.3.1	<b>Date:</b>	10/06/2025
<b>Product:</b>	Hybrid Pro 2.0/Ax Pro, IPC			<b>Page:</b>	4 of 4



3) Then click **Event Center—Perimeter Protection** on the left side.



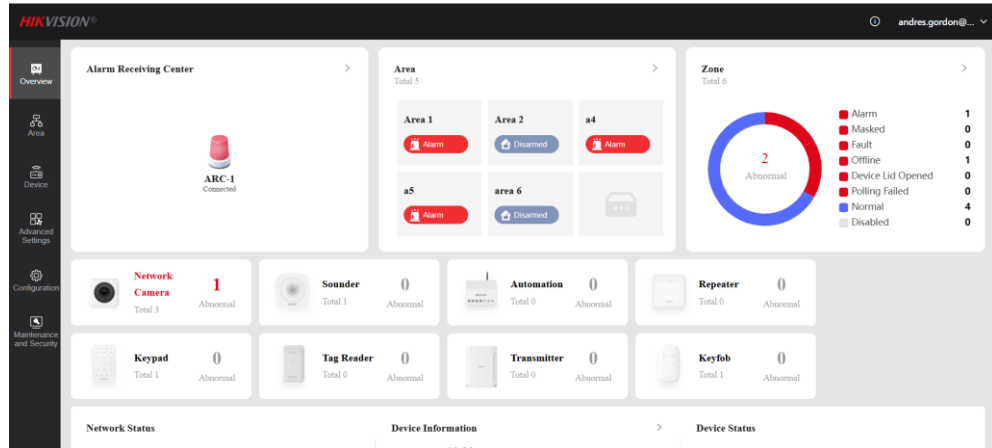
4) For Rules, we find **Perimeter Protection**, then take **Region Entrance** for example: left-click to place vertices for a polygon, and right-click to complete the shape.



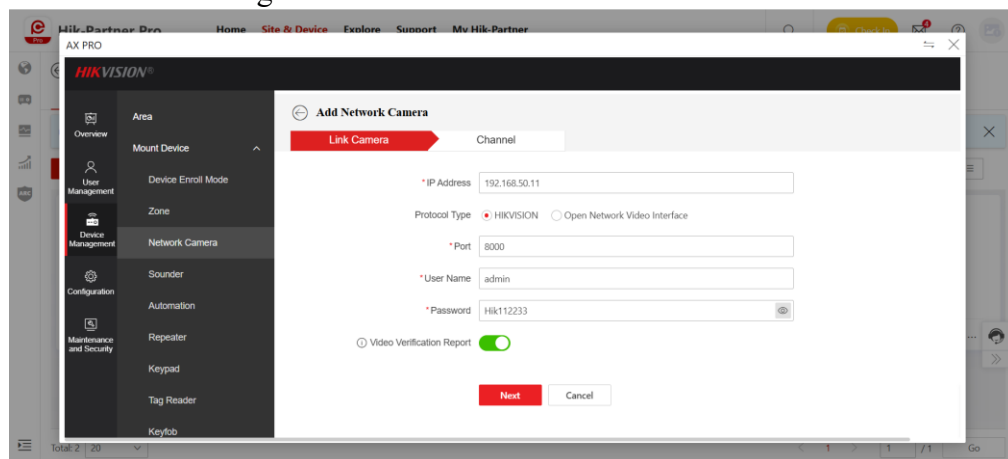
<b>Title:</b>	How to Use Camera Rule& Event in Ax Hybrid Pro 2.0/AxPro 1.3.1	<b>Version:</b>	Hybrid Pro 2.0/AxPro 1.3.1	<b>Date:</b>	10/06/2025
<b>Product:</b>	Hybrid Pro 2.0/Ax Pro, IPC			<b>Page:</b>	4 of 4

## 2. Configure the zone on Panel

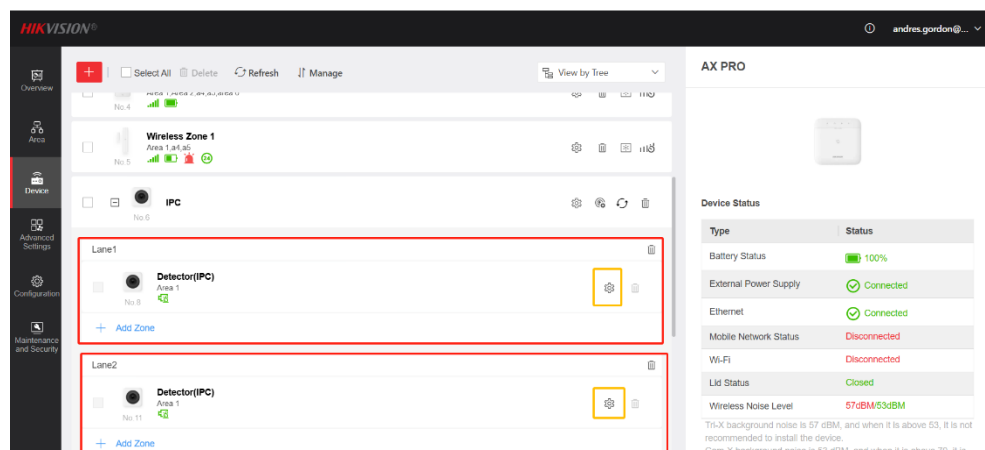
- 1) The same method as IPC web configuration, find IP to enter the configuration page of control panel which is connected (or to be connected) with IPC.



- 2) Go to Device management and add the network camera.

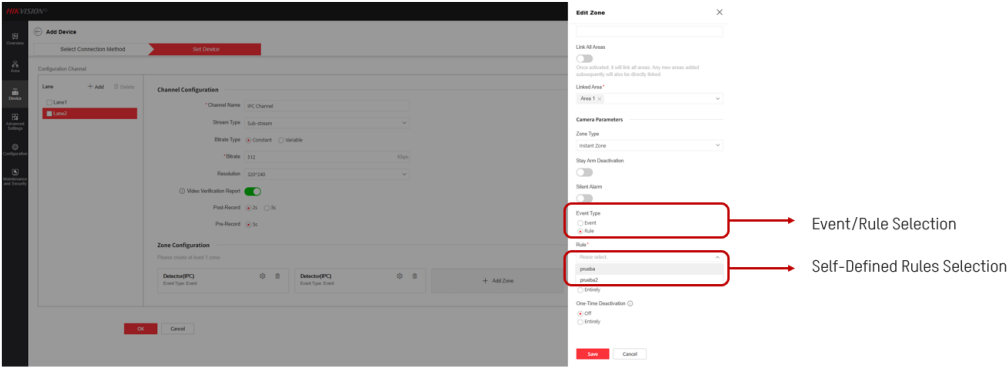


- 3) Then you can see the camera in the device list, click the configuration button in yellow box.

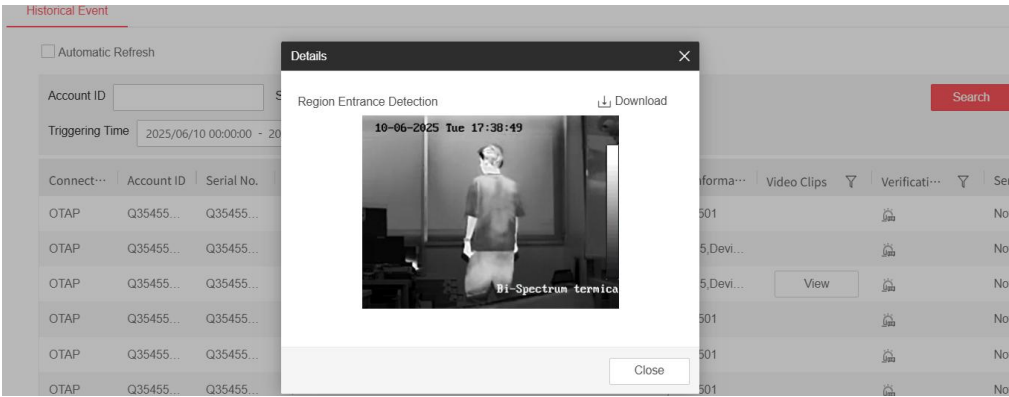


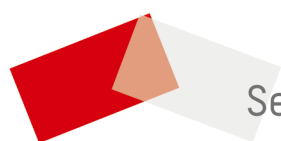
<b>Title:</b>	How to Use Camera Rule& Event in Ax Hybrid Pro 2.0/AxPro 1.3.1	<b>Version:</b>	Hybrid Pro 2.0/AxPro 1.3.1	<b>Date:</b>	10/06/2025
<b>Product:</b>	Hybrid Pro 2.0/Ax Pro, IPC			<b>Page:</b>	4 of 4

- 4) Enter the setting of **Detector (IPC)** and screw down, you will see **Event Type** (Event or Rule) and **Event** list where you could select which ones you want to apply and save.



- 5) Then trigger the region entrance event on camera, in the IPRP or Hik-Connect you will see the alarm video verification.





See Far, Go Further