

COLT10DL



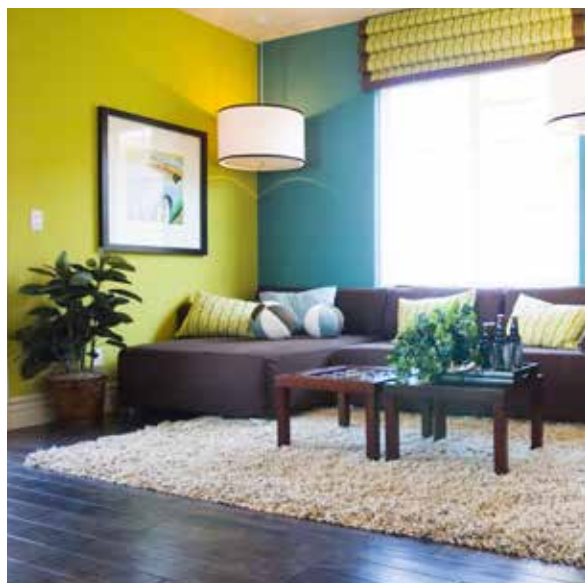
## Small & mighty

Delivering dependable security with  
discreet & sleek style

Does the user have a pet but still need to detect?  
Look no further than the compact, discreet COLT10DL.  
Its small and unobtrusive style allows perfect fitting,  
while delivering great protection.

Complies with EN50131-1

[www.pyronix.com](http://www.pyronix.com)



### Supreme accuracy with Digi-Logic Technology

Digital signal processing whereby the signal rise time is digitally analysed from its normal quiescent state, comparing the rise and fall times of the Passive Infrared (PIR) signal. The detector can differentiate between slow meandering signals which are received through slow moving air currents or pets, and fast rising signals which are received through true intruder movement.

### Avoid false alarms with Blue Wave Technology (BWT)

Advanced signal processing and precision optics safeguard against false alarms and improve immunity to interference:


- **Digital temperature compensation**

Digitally adjusts the sensitivity of the detector to maintain its specified range when the background temperature is close to body temperature.

- **Adjustable sensitivity**

The sensitivity of the detector automatically adjusts when there are temperature fluctuations, to increase or reduce the amount of opposing zones required to be crossed to create an alarm condition. This stabilises the detector in harsh environments.



Partcode	COLT10DL
<b>Optical &amp; Range Features</b>	
Volumetric coverage	90 degree, 56 zone and 5 planes
Maximum range	10m
Optimal installation height	1.8-2.4m
<b>Key Features</b>	
Animal immune	Up to 10kg
Digi logic technology	✓
Adjustable sensitivity	✓
Tamper protection	✓
<b>Electrical Features</b>	
Operating voltage	9 - 16 VDC
Quiescent current consumption	15mA at 12V
Relay outputs	SELV limits, 60Vdc, 50mA (42.4Vac peak)
Tamper switch	12V 50mA
<b>Other Details</b>	
Operating   storage temperature	-30°C to 70°C   -40°C to 80°C
Weight	58g
Dimensions	82mm x 50mm x 41mm
Warranty	5 years
<b>Certifications</b>	
Electrical conformity	CE
EN50131	Grade 2
Environmental class	II
	Self-certified

### Adaptable, optimised & stylish

- **Sealed optics**

Protects from possible infestation from insects, shields air movement in front of the pyro-electric sensor and protects against adverse reflections from inside the detector housing.

- **ABS plastics**

3mm polished finish produces a professional and sleek finish while reducing electrostatic interference.

### Dogs & cats allowed

- **Pet Immune (PI)**

The detector's intelligent PI technology analyses the difference between an intruder and a pet signal, with immunity up to 10kg and 10m coverage range.