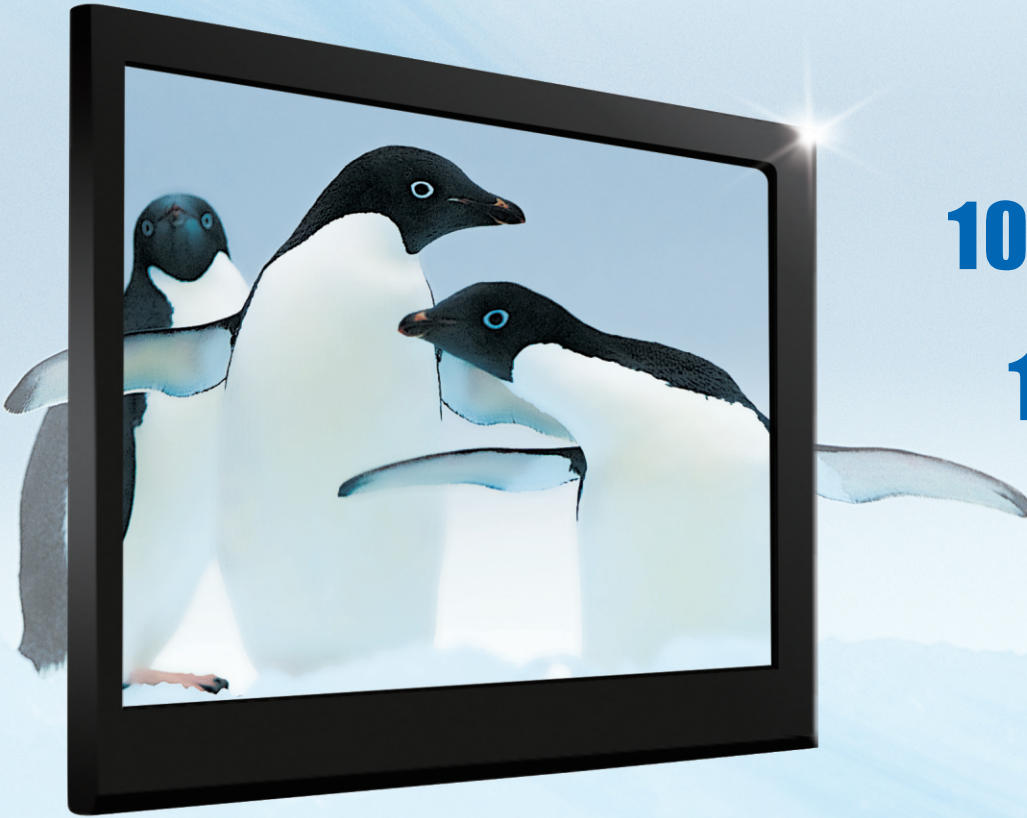


**TVT**

*Secure The World With You*

**HD** CCTV  
Over Coax



**1080P** DISPLAY

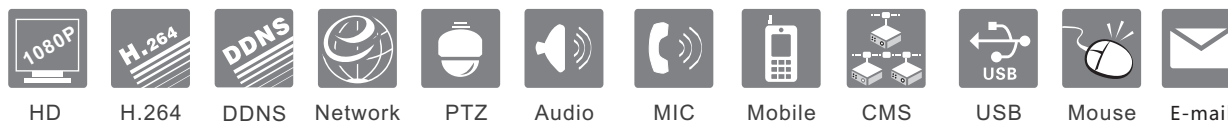
**1080P** RECORD

**1080P** PLAYBACK



**TD-2700TS-PL**

**HD TVI DVR**  
HD TVI DVR



## Specification

Model	TD-2704TS-PL	TD-2708TS-PL	TD-2716TS-PL		
System	Compression	Standard H.264 High Profile			
	CPU	Cortex A9			
	OS	Embedded Linux			
Video	Input	BNC x 4	BNC x 8	BNC x 16	
	IP Input / Access Bandwidth	Support 1080P@25 / 30fps, 720P@25 / 30 / 50 / 60fps, 960H, D1 input			
	Output	IPC x 1 / 6Mbps	IPC x 4 / 24Mbps	IPC x 8 / 24Mbps	
Audio	Input	RCA x 1			
	Output	RCA x 1			
	2-way audio	Take up channel one audio input			
Record	Resolution	1080P: 1920 x 1080, 720P : 1280 x 720, WD1, D1			
	Frame Rate	720P / WD1 / D1	100 fps ( PAL ) 120 fps ( NTSC )	200 fps ( PAL ) 240 fps ( NTSC )	400 fps ( PAL ) 480 fps ( NTSC )
		1080P	50 fps ( PAL ) 60 fps ( NTSC )	100 fps ( PAL ) 120 fps ( NTSC )	200 fps ( PAL ) 240 fps ( NTSC )
	Bit rate	1 M ~ 4 Mbps			
	Encode	VBR / CBR			
	Quality	6 Level			
	Mode	Manual, timer, motion			
	File manager	Lock, unlock, reserving time			
IP Input	Resolution	1080P/960P/720P/WD1/D1	3MP/1080P/960P/720P/WD1/D1		
	Frame Rate	3MP	--	50 fps ( PAL ) 60 fps ( NTSC )	100 fps ( PAL ) 120 fps ( NTSC )
		1080P	12 fps ( PAL ) 15 fps ( NTSC )	100 fps ( PAL ) 120 fps ( NTSC )	200 fps ( PAL ) 240 fps ( NTSC )
		960P/720P	25 fps ( PAL ) 30 fps ( NTSC )	100 fps ( PAL ) 120 fps ( NTSC )	200 fps ( PAL ) 240 fps ( NTSC )
Play back	Playback	4 CH	8 CH		
	Search	Time / calendar search, event ( motion )			
	Smart Search	Highlighted date and time to display the channel record			
	Function	Play, Pause, FF, FB, Digital zoom			
Alarm	Mode	Motion, video loss			
	Input	No			
	Output	No			
	Triggering	Record, PTZ move, e-mail, etc			
Network	Interface	RJ45 10M/100M adaptive ethernet network port x 1			
	Protocol	TCP / IP, UDP, DHCP, DNS, PPPOE, DDNS			
	Others	10 users online, dual stream			
Cell phone	OS	iPhone, Andriod			
	Function	Multi-screen surveillance ( for certain model ) , record, snapshot, PTZ control, save the device list			
I/O	HDD	SATA x 1			
	RS485	RS485 x 1, connect to PTZ or keyboard			
	USB	USB 2.0 x 2, one for mouse, another for USB backup device			
	IR controller	Optional			
Others	Power supply	DC 12V			
	Consumption	< 9W ( without HDD )	< 14W ( without HDD )	< 20W ( without HDD )	
	Dimensions ( W * D * H )	255 * 210 * 42 mm		300 * 270 * 58 mm	
	Work Environment	- 10 °C ~ 50 °C , 10 % ~ 90 % Humidity			

## Introduction

TD-2700TS-PL series are standard 4 / 8 / 16 CH 1080P high resolution hybrid DVRs with ability to connect analog and IP cameras simultaneously, which adopt the standard H.264 high profile compression format and the most advanced SOC technique to ensure recording in each channel and realize outstanding robustness of the system. TD-2700TS-PL support 4 / 8 / 16 CH video input, 1 CH audio input, simultaneous 4 / 8 CH playback. The series of product can meet different security requirements of home, financial, commerce, enterprise, transportation and government, etc.

## Characteristics

- 4 / 8 / 16 CH HD TVI video input, 1080P / 720P / WD1 / D1 recording
- 4 CH DVR supports 1 CH IPC 1080P/960P/720P/WD1/D1 recording, 8 / 16 CH DVR supports 4 / 8 CH IPC 3MP/1080P/960P/720P/WD1/D1 recording
- Adopt standard H.264 high profile compression format to get high-quality video at much lower bit rate
- Intuitive and user-friendly Graphic User Interface ( GUI ), Windows style operation by mouse
- Multi-mode recording: manual / timer / motion
- Playback: 4 / 8 CH simultaneously playback
- Search: time / calendar, events ( motion )
- Express and flexible backup via USB, network
- Pentaplex : preview, record, playback, backup and remote access
- DHCP, DDNS, PPPoE Network protocol, IE browse and CMS supported
- Remote control via IE or CMS: preview, playback, backup, PTZ and configuration
- Dual stream technology to encode recording stream and network stream respectively. User can adjust network stream to fit bandwidth without changing recording quality
- Multi-user online simultaneously
- Authorization management, log review and device status review
- HDMI 1080P output, true high resolution display
- Support PTZ preset and auto cruise, up to 128 presets and 8 cruises
- Powerful smart phone surveillance supporting iPhone, Andriod
- Support NAT function, support QR code scanning by mobile phone
- Complete SDK software available, easy to integrate with other applications

## Dimensions

