

# Panasonic

ideas for life

## 43.2cm (17") LCD AV Monitor WV-LC1710



### New High Resolution LCD Monitor With Exceptional Image Quality

Panasonic introduces a new 43.2cm (17") LCD color monitor with extraordinary image quality. This new monitor comes equipped with a 1,280 x 1,024 high-resolution SXGA panel, 500 TV lines of horizontal resolution, a 178° (horizontal) x 178° (vertical) viewing angle, and 8-bit full color display — plus, proprietary Panasonic image-processing technology that delivers images with greater sharpness and clarity. It also comes equipped with three video terminals (composite, S-Video and Y/Cb/Cr component video) plus RGB for PC input, audio output and a Max. 0.5W built-in speaker.

Its real-time Picture in Picture (PIP) feature allows simultaneous viewing of surveillance camera images and PC screens. The 1/9<sup>th</sup> size PIP makes it easy to choose the images and screens you need. The PIP window can be placed in any of the panel's four corners, whichever is best for you. Buttons on the front of the monitor and seven language menus make settings and adjustments simple. You can use it as a desktop monitor, or with an optional bracket, it can be mounted on an EIA 19-type rack mount. Or, you can mount it on a wall using a locally supplied standard VESA bracket. A security slot in the back allows insertion of an industry-standard anti-theft lock. Power consumption is 43W, and the monitor is only 70mm\* thick.

The energy and space savings compared to conventional CRTs are enormous, and this monitor also has a longer life.

The WV-LC1710 is the perfect match for a wide range of security applications where high-quality, highly reliable monitoring is a must.

(\*Excluding the stand)

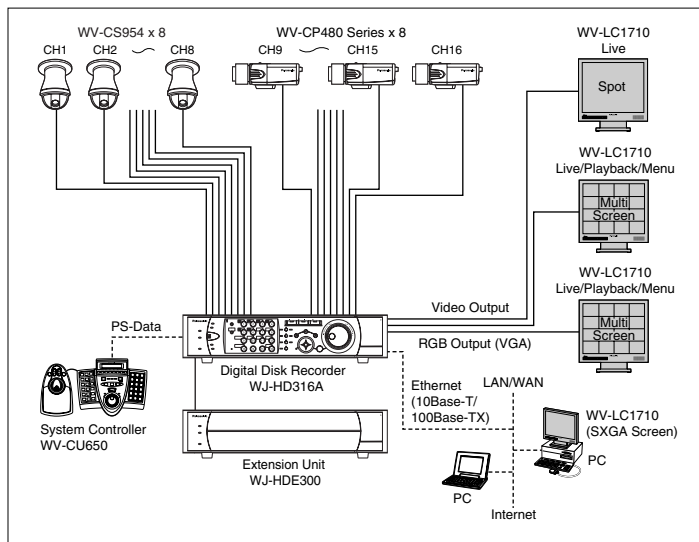
#### KEY FEATURES

- Screen size: 43.2 cm (17") diagonal.
- Screen resolution: 1,280 x 1,024 (SXGA).
- Horizontal resolution: 500 TV lines.
- High contrast, 178° (H) x 178° (V) wide field of view and true 8 bit full color display.
- High picture quality and high resolution using motion adaptive I/P converter technology.
- Three (3) video terminals (composite, S-Video and Y/Cb/Cr component video) plus RGB for PC input.
- Max. 0.5W speaker output.
- Three (3) selectable scan sizes: full scan (5:4), over scan (4:3) and under scan (4:3).
- Built-in real-time Picture in Picture (PIP) function with 1/9th screen size.
- Picture setup and adjustment using on-screen menus and front-mounted buttons.
- Setup menu can be displayed in seven (7) languages: English, French, German, Spanish, Italian, Chinese and Japanese.
- Optional mounting bracket: WQ-LM171 for EIA 19-type rack.
- Wall-mountable using locally supplied VESA standard mounting bracket.
- Power supply: 100V - 240V AC with AC adapter.



\*All TV pictures are simulated.

## SYSTEM EXAMPLE



## SPECIFICATIONS

Model No.	WV-LC1710	
<b>TV System</b>	NTSC or PAL standard (automatic switching)	
<b>Display Panel</b>	Screen Size	43.2 cm (17") diagonal actual visual size (H: 338 mm, V: 270 mm)
	Pixel	1,280 x 1,024 (SXGA)
	Display Colors	8 bits (approx. 16,770,000 colors)
	Contrast Ratio	1,000 : 1 (Typical)
	Brightness	250 cd/m <sup>2</sup> (Typical)
	Viewing Angle	H: 178°, V: 178° (contrast 10 : 1) (Typical)
<b>Horizontal Resolution</b>	500 TV lines	
<b>Composite Video Input / Output</b>	1.0 V [p-p] composite / 75 Ω (Hi-Z) loop thru, BNC connectors x 2	
<b>S-Video Input</b>	Y: 1.0 V [p-p] / 75 Ω, C: 0.286 V [p-p] / 75 Ω, Mini DIN connector x 1	
<b>Component Video Input</b>	Y: 1.0 V [p-p] / 75 Ω, Cb: 0.7 V [p-p] / 75 Ω, Cr: 0.7 V [p-p] / 75 Ω, BNC connectors x 3	
<b>PC Input</b>	R/G/B: 0.7 V [p-p] / 75 Ω, 15-pin D-sub Connector x 1	
<b>Audio Input / Output</b>	-8 dB / Hi-Z, loop thru, RCA pin terminals x 2	
<b>Speaker Output</b>	0.5 W (Built-in speaker: 8 Ω)	
<b>Color Temperature</b>	Video Input	Standard / 9,300 °K / 6,500 °K
	PC Input	User Color / 9,300 °K / 6,500 °K
<b>Picture in Picture Display</b>	1/9th screen size, can be displayed into 4 different corner positions	
<b>Power Supply</b>	100 V - 240 V AC, 50/60 Hz (with AC Adapter)	
<b>Power Consumption</b>	43 W	
<b>Ambient Operating Temperature</b>	-10 °C - +40 °C (14 °F - 104 °F)	
<b>Ambient Operating Humidity</b>	Less than 90 %	
<b>Dimensions (W x H x D)</b>	with stand	380 mm x 394 mm x 70 mm (14-15/16" x 15-1/2" x 2-3/4")
<b>Weight</b>	with stand	approx. 6.5 kg (14.3 lbs.)

## OPTIONAL COMPONENTS & ACCESSORIES

<p>Super Dynamic III Color Dome Camera <b>WV-CS954</b></p>  <p>SDIII Super Dynamic</p>	<p>Weather Proof &amp; Vandal Resistant Color Dome Camera <b>WV-CW864A</b></p> 	<p>Digital Disk Recorders <b>WJ-HD316A</b> (16ch) <b>WJ-HD309A</b> (9ch)</p> 	<p>Matrix Systems <b>SYSTEM850</b> <b>SYSTEM150</b></p> 	<p>EIA 19-type Rack Mount Bracket <b>WQ-LM171</b></p> 
<p>Vandal Proof Super Dynamic II Color Cameras <b>WV-CW474A Series</b></p> 	<p>Super Dynamic III Color Surveillance Cameras <b>WV-CP480 Series</b></p>  <p>(Lens: optional)</p>	<p>System Controller <b>WV-CU650</b></p> 		

**Important** – Safety Precaution: carefully read the operating instructions and installation manual before using this product.

• Microsoft, Windows and WindowsXP are registered trademarks of Microsoft Corporation.

• All TV pictures are simulated. • Weights and dimensions are approximate. • Specifications are subject to change without notice. • These products may be subject to export control regulations.

# Panasonic

**Panasonic System Solutions Company**  
Unit Company of Panasonic Corporation of North America  
**Security Systems**

Website : [www.panasonic.com/security](http://www.panasonic.com/security)

For Customer Support : call **1.877.733.3689**

**Executive Office** : Three Panasonic Way 2H-2, Secaucus, New Jersey 07094

**Zone Office**

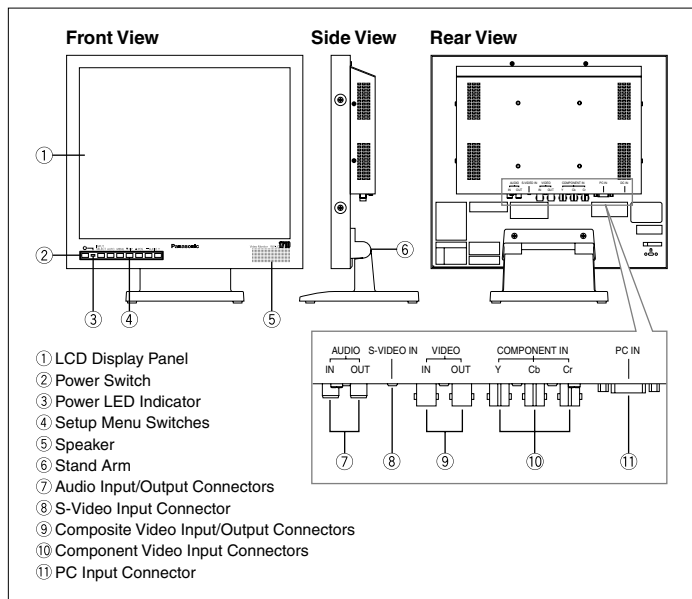
**Eastern** : Three Panasonic Way, Secaucus, New Jersey 07094

**Central** : 1707 N.Randal Road, Elgin, IL 60123

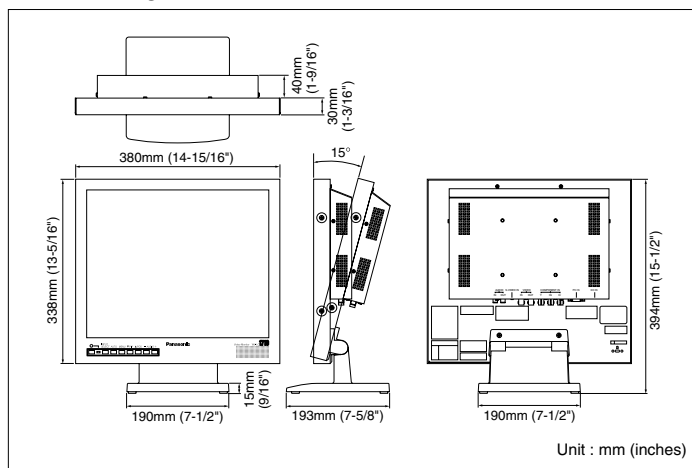
**Southern** : 1225 Northbrook Parkway, Suwanee, GA 30024

**Western** : 6550 Katella Ave., Cypress, CA 90630

## MAJOR OPERATING CONTROLS & TERMINALS



## APPEARANCE



DISTRIBUTED BY:

**PANASONIC CANADA INC.**

5770 Ambler Drive, Mississauga, Ontario, L4W 2T3 Canada (905) 624-5010

**PANASONIC PUERTO RICO INC.**

**DIVISION OF PANASONIC CORPORATION OF NORTH AMERICA**

San Gabriel Industrial Park, 65th Infantry Ave. KM. 9.5 Carolina, P.R. 00985 (809) 750-4300

Printed in Japan

WW-JHLC1710T(2P-530)