

DESCRIPTION

Standalone, electronic siren for outdoor use, with high acoustic power and a new, modern design.

GENERAL FUNCTIONS

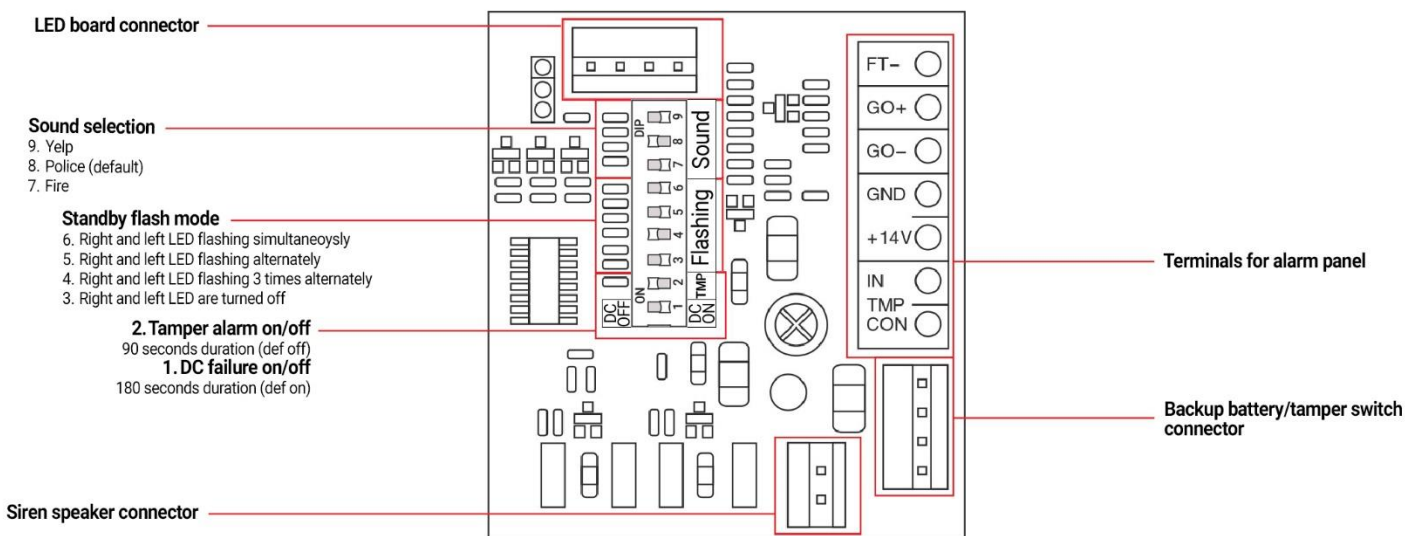
- Features included :
 - 3 distinct alarm sounds
 - 4 LED flashing modes in stand-by mode
 - 2 ways of trigger, by applying a negative (-) or positive (+) voltage
 - 1 contact for triggering LED function, by applying a negative (-) voltage “FT (-)”
- In case of power outage from the alarm panel, the siren may sound or not, depending on the installer's choice of **DIP SWITCH 1 (DC ON/DC OFF)** position.
- Option to activate or deactivate the electronic tamper of the siren, depending on the installer's choice of **DIP SWITCH 2 (TMP)** position.
- Tamper (**TMP**) output is activated when the outer lid is opened but also when the siren is detached from the installation point.
- Ergonomic position of connection block for easy installation.
- Ability to operate with or without battery.
- Battery protection against complete discharge.
- Metal protective cover inside the siren.

SPECIFICATION

TECHNICAL CHARACTERISTICS	VALUE/MODE
Supply voltage	12-14V DC
Idle consumption	10-20mA
Alarm consumption	Battery operation 450 – 550mA / Main supply operation 1150 - 1250mA
Operating frequency	1300-2400Hz
Acoustic power	Up to 124dB at 1 meter
Maximum power	50W (Peak)
LED FLASH consumption	30-40mA
TAMPER protection switch	On the lid and against the wall
TAMPER N.C / N.O switch contact	600mA / 125V DC
Duration of TAMPER alarm	90 sec
Trigger inputs	By applying (GO) negative (-) or positive (+) voltage
Protection against particles & water	IP54
Battery	12V / 1,2Ah - 3,3Ah - 7Ah
Weight	1550 grams
Dimensions	193/270/106mm (WxHxD)

CONNECTION BLOCK

DESCRIPTION OF TERMINALS	
GND / +14V	Powering (DC) the siren from the panel (- / +)
GO (-)	Alarm input, speaker stimulation & flash with negative trigger application
GO (+)	Alarm input, speaker stimulation & flash with positive trigger application
FT (-)	Flash input, LED visual activation only
TMP / COM	TAMPER output of the siren



SIREN PROGRAMMING WITH DIP SWITCH

DESCRIPTION OF DIP SWITCH	
SOUND (DIP SWITCH 7, 8, 9)	Choose from 3 distinct alarm sounds (default DIP SWITCH 8 ON)
FLASH (DIP SWITCH 3, 4, 5, 6)	Choose from 4 distinct flashing modes (default DIP SWITCH 4 ON)
TMP (DIP SWITCH 2)	Option to turn the electronic tamper on or off (default position OFF)
DC (DIP SWITCH 1)	Option to turn the alarm mode on or off in the event of a power outage (e.g. power cable cut / factory position ON)

! Before changing the programming of the siren by switching positions of DIP SWITCH, the power supply needs to be interrupted and then restored after the changes, in order to save new settings.

INSTALLATION OF THE SIREN

To install the siren, the following are suggested:

1. Choose a location for the siren so that it is difficult to access, safe from sabotage but suitable for the siren to be visible from every view angle. The installation surface must not show severe irregularities, which may affect the correct operation of the siren's tamper switch. A place exposed as little as possible to weather phenomena is recommended.
2. Route the cable from the alarm panel inside the siren according to safety standards. Connect each strand properly to the terminals according to the system's requirements.