

OutGate



New Motion Detector for Outdoor
Infrared + Doppler Radar for Outdoor Use
Exclusive Integrated Fresnel Lens
8 Antennas K-Band Detection
Easy Positioning with Patented Swivel
Blue & Red Led Monitoring

OUTGATE is a new compact design Dual Technology Motion Detector, special for outdoor environments.

OUTGATE makes use of 2 detector combinations, configured in AND or OR mode:

- 24 GHz Doppler Radar with 8 K band miniaturized antennas.
- Passive Infrared Sensor with a Unique Curtain Fresnel lens that encapsulates the pyro-element for a better protection from external agents.

The **AND** mode requires activation of both sensors to generate a Movement Alarm (useful for dynamic environments).

The **OR** mode uses, however, the activation of one or the other sensor, to generate a Movement Alarm (useful for more stable environments).

Both functions are anyway controlled by intelligent integrated MICROPROCESSOR.

TECHNICAL SPECIFICATION

Power supply 12 VDC

Power consumption in standby: 35 mA

Consumption in operating mode: 42 mA

Operating temperature: $-20^{\circ}\text{C} + 60^{\circ}\text{C}$

MicroRadar Coverage: $34^{\circ} / 80^{\circ} > 8\text{m}$

Infrared Coverage: $34^{\circ} / 120^{\circ} > 8\text{m}$

Miniaturized Radar 8 with antennas

Exclusive Fresnel Curtain Lens

MicroRadar frequency range 24,050-24,250 GHz factory predetermined

MicroRadar monitoring through BLU LED

Infrared Monitoring through RED LED

Movement Alarm Intelligent Discrimination controlled by Integrated

Microprocessor

Alarm output (Normally Closed)

High immunity to Mic. effect and to Transients

Trimmer for Microradar Sensitivity adjustment

Trimmer for Microradar Delay adjustment

Trimmer for Infrared Sensitivity adjustment

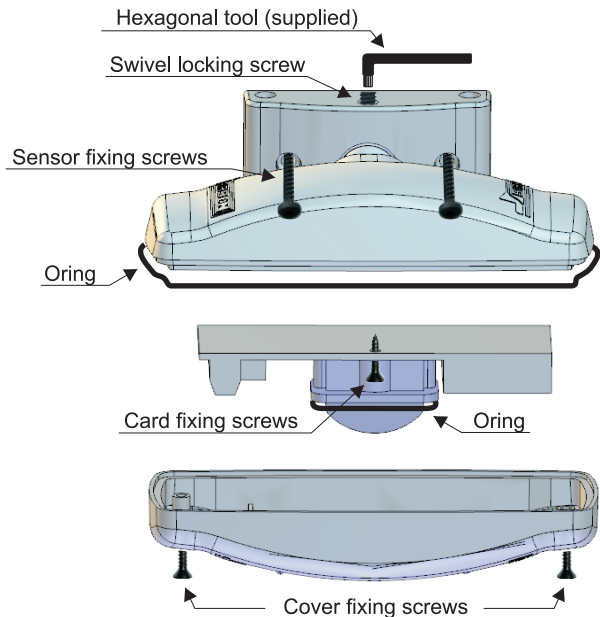
Block Input for Microwave Emission

Jumpers for LED indicator masking

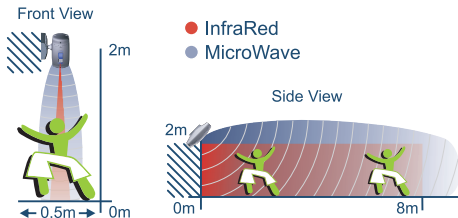
Jumper for selecting the AND / OR logic mode

Tamper protection against detector opening

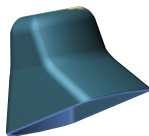
OUTGATE has been designed for an easy and quick installation; this is also possible thanks to the exclusive Compact Swivel.



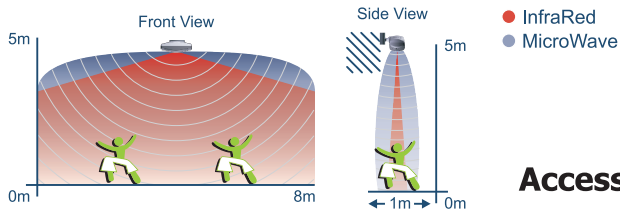
Vertical Installation



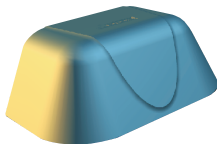
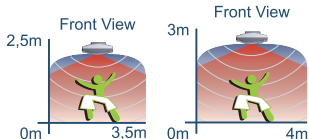
Accessory



Horizontal Installation

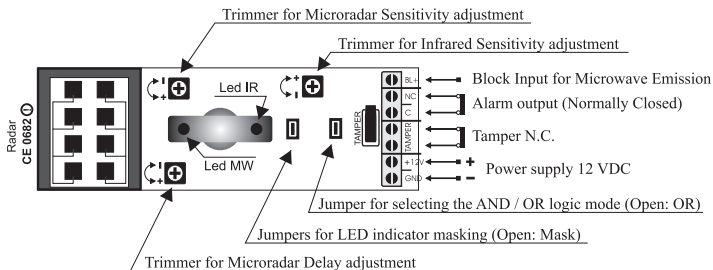


Accessory



OUTGATE allows quick adjustments during installation, thanks to:

- 3 Regulation Trimmers (Microradar Coverage, Microradar delay, Infrared Coverage).
- 2 Monitoring LEDs (**Blue** for Microradar / **Red** for Infrared).
- 2 Jamper for **AND / OR** and **LED ON / OFF** mode selection.



RED LED ON: Indicates Infrared Sensor Alarm

BLUE LED ON FOR 2 SECONDS: Indicates Microradar Alarm.

MICROWAVE INPUT BLOCK (BL+): applying a positive (+) on input block (BL+), OutGate will stop microwave emission.

After completing the electrical connections as shown, lock the hinge and start settings as follows:

1. Adjust the sensitivity of Infrared sensors, using the proper trimmer till it reaches the desired detection range. Please consider that external temperature affects the detection capability which usually improves with cooler temperatures. During this operation, pay attention to Red LED only.

2. Adjust the sensitivity of microwave radar using the proper Trimmer till it reaches the desired detection range. During this operation, pay attention to Blue LED only. It's strongly suggested not to push the sensitivity beyond required detection range, as the Microwave Radar is sensitive to movements of tree branches, flowing water or other moving objects.

3. Adjust Microwave Delay by proper Trimmer. Please consider that higher delay can discriminate micro-movements. It's anyway suggested not to point the detector to moving objects such as trees, bushes, flowing water and other moving objects.

4. Select desired operation mode (AND / OR) through the proper Jumper.

5. Before closing the detector with cover, remove the Jumper LED ON / OFF if you want to mask sensor operation.

NOTE: quick flashes of the blue LED does not indicate the Activation of the Movement Alarm, but only a "Pre-detection". On the other hand, when a Movement Alarm is detected by Microwave Radar, this is indicated by the Blue LED ON for about 2 seconds.

CE ⓘ RoHS

info@simaelettronica.com - info@sirsen.com

www.simaelettronica.com