



WJ-HD616/716

H.264 High Performance Digital Disk Recorder

**Security & Sound Systems Business Unit,
System Solutions Company**

SD5 Family

SD5 family line up including SD5 cameras, WJ-HD616/716 and LCD monitors ensure the quality and usability of total surveillance system.

Capturing



WV-CP500/504



WV-CW504

Superior Image
Intelligence
Reinforced Surveillance

SD5
Super Dynamic
Family

Recording

WJ-HD616/716



High quality/frame rate
Reliability
SD5 Link

Viewing

New LCD Monitor

WV-LW1900/2200



High picture quality
High definition

Overview

WJ-HD616/716 is a high performance DVR featuring H.264 High Profile, SD5 link, HDMI output, made possible by Panasonic's state of the art technology.

**High Image Quality
High Frame Rate**

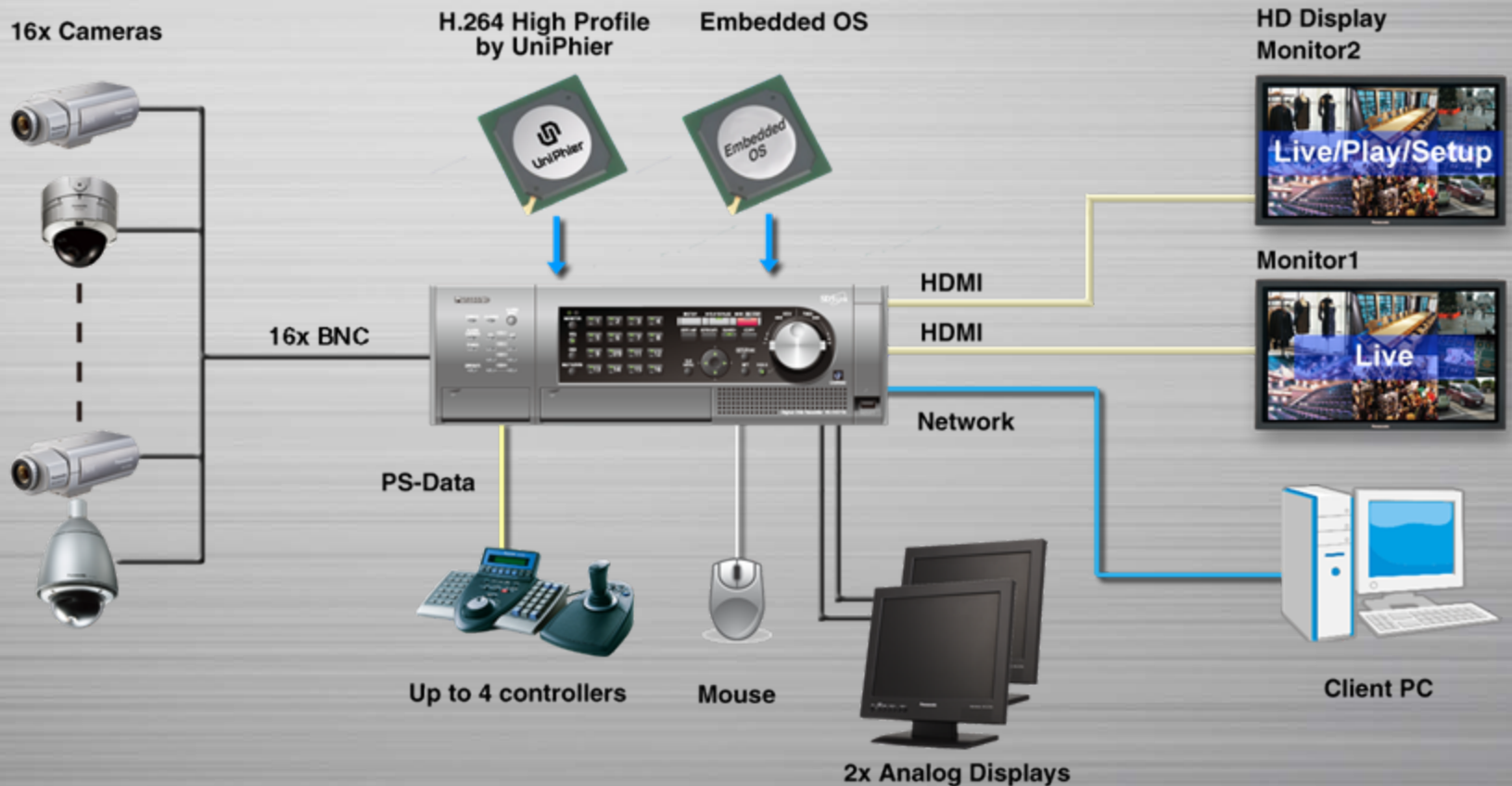


**Reliability
Easy maintenance**

SD5 Link
Super Dynamic

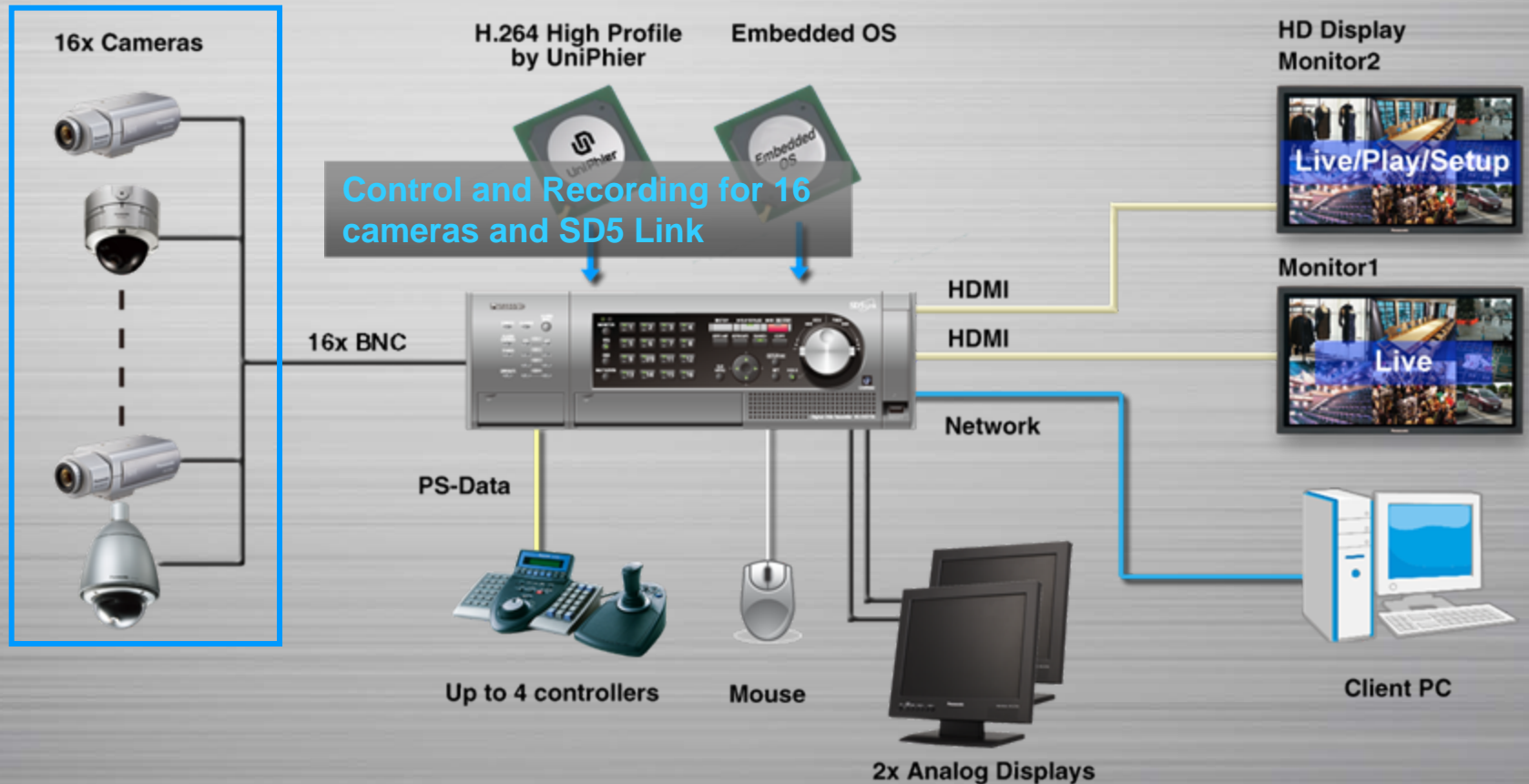
Overview

WJ-HD616/716 is a high performance DVR featuring H.264 High Profile, SD5 link, HDMI output, made possible by Panasonic's state of the art technology.



Overview

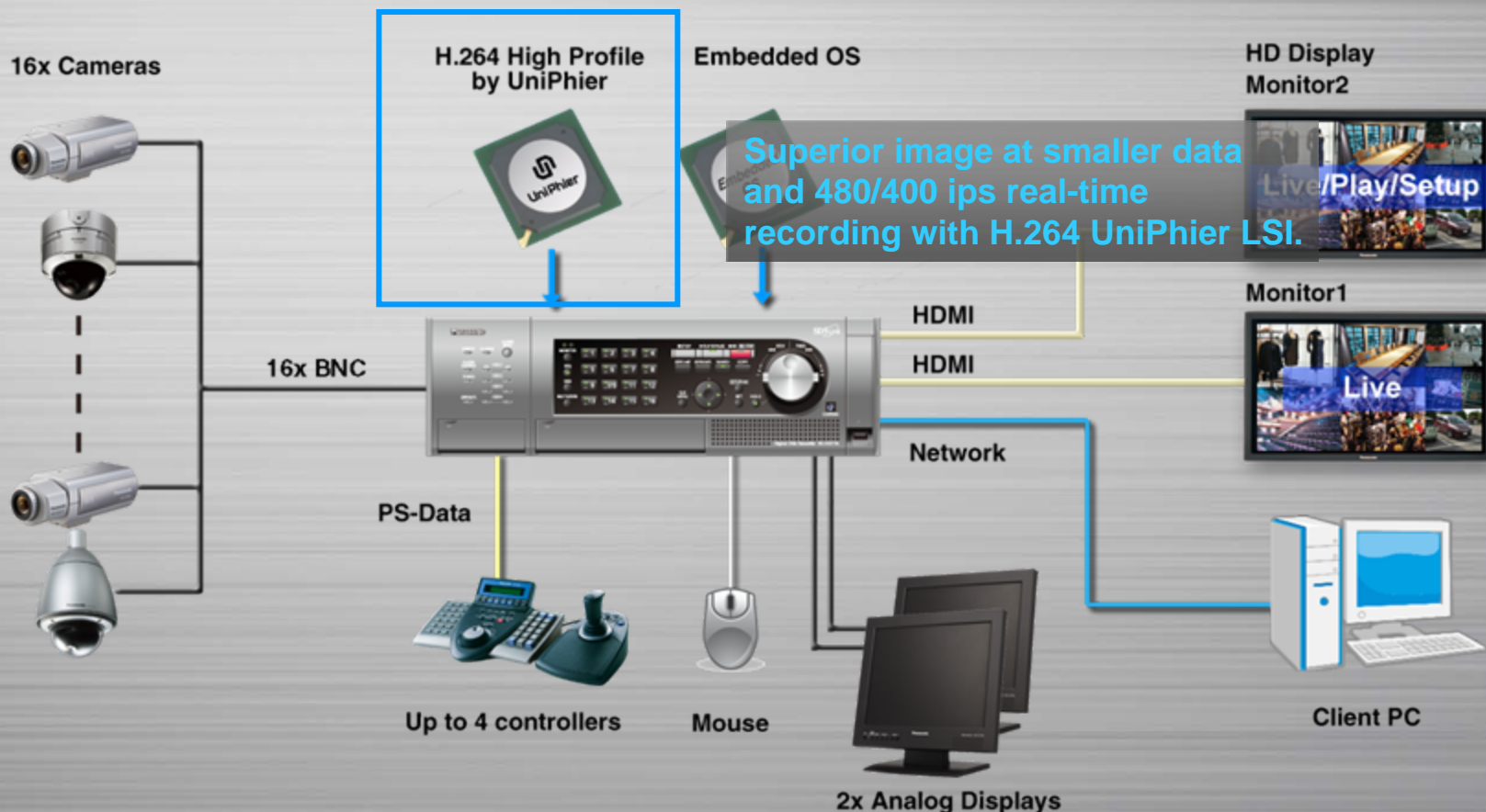
WJ-HD616/716 is a high performance DVR featuring H.264 High Profile, SD5 link, HDMI output, made possible by Panasonic' s state of the art technology.



Note: WJ-HD616 requires RS-485 to control Camera 9-16

Overview

WJ-HD616/716 is a high performance DVR featuring H.264 High Profile, SD5 link, HDMI output, made possible by Panasonic' s state of the art technology.



Overview

WJ-HD616/716 is a high performance DVR featuring H.264 High Profile, SD5 link, HDMI output, made possible by Panasonic' s state of the art technology.

16x Cameras



16x BNC

H.264 High Profile
by UniPhier

Embedded OS

High resolution and versatile multiscreen
modes with dual HDMI outputs



HDMI

HDMI

Network

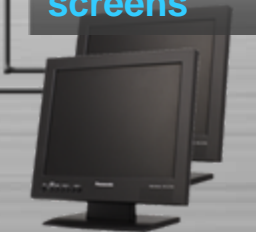
PS-Data



Up to 4 controllers



Mouse



2x Analog Displays

HD Display
Monitor2



Monitor1



Up to 960/800 ips output on 2x 16 split
screens

Client PC



Overview

WJ-HD616/716 is a high performance DVR featuring H.264 High Profile, SD5 link, HDMI output, made possible by Panasonic' s state of the art technology.

16x Cameras



16x BNC

H.264 High Profile
by UniPhier



Embedded OS



HDMI

HDMI

Network

HD Display



PS-Data



Up to 4 controllers



Mouse



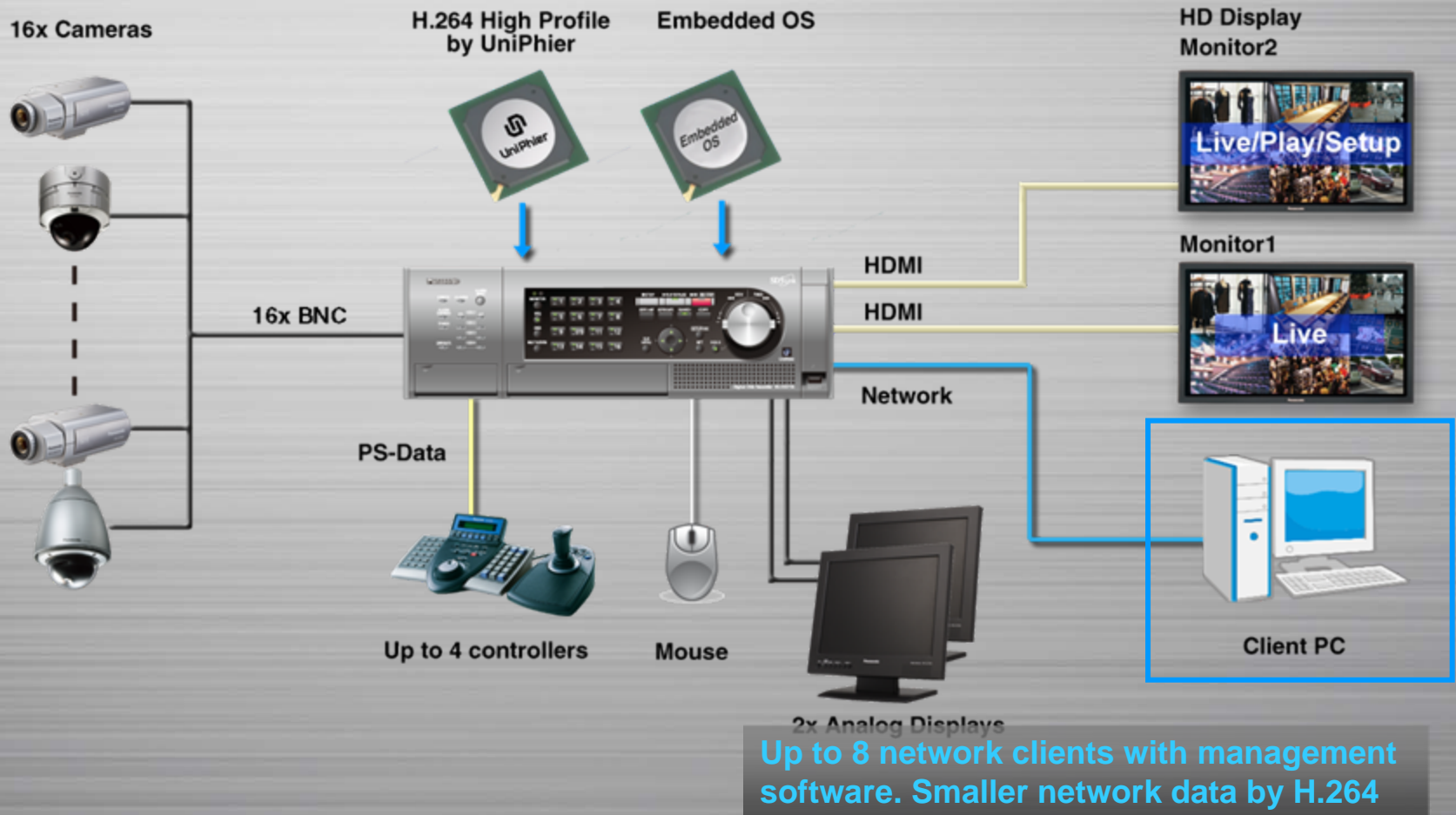
2x Analog Displays



4 operation methods including front panel buttons, mouse, browser GUI and system controller.

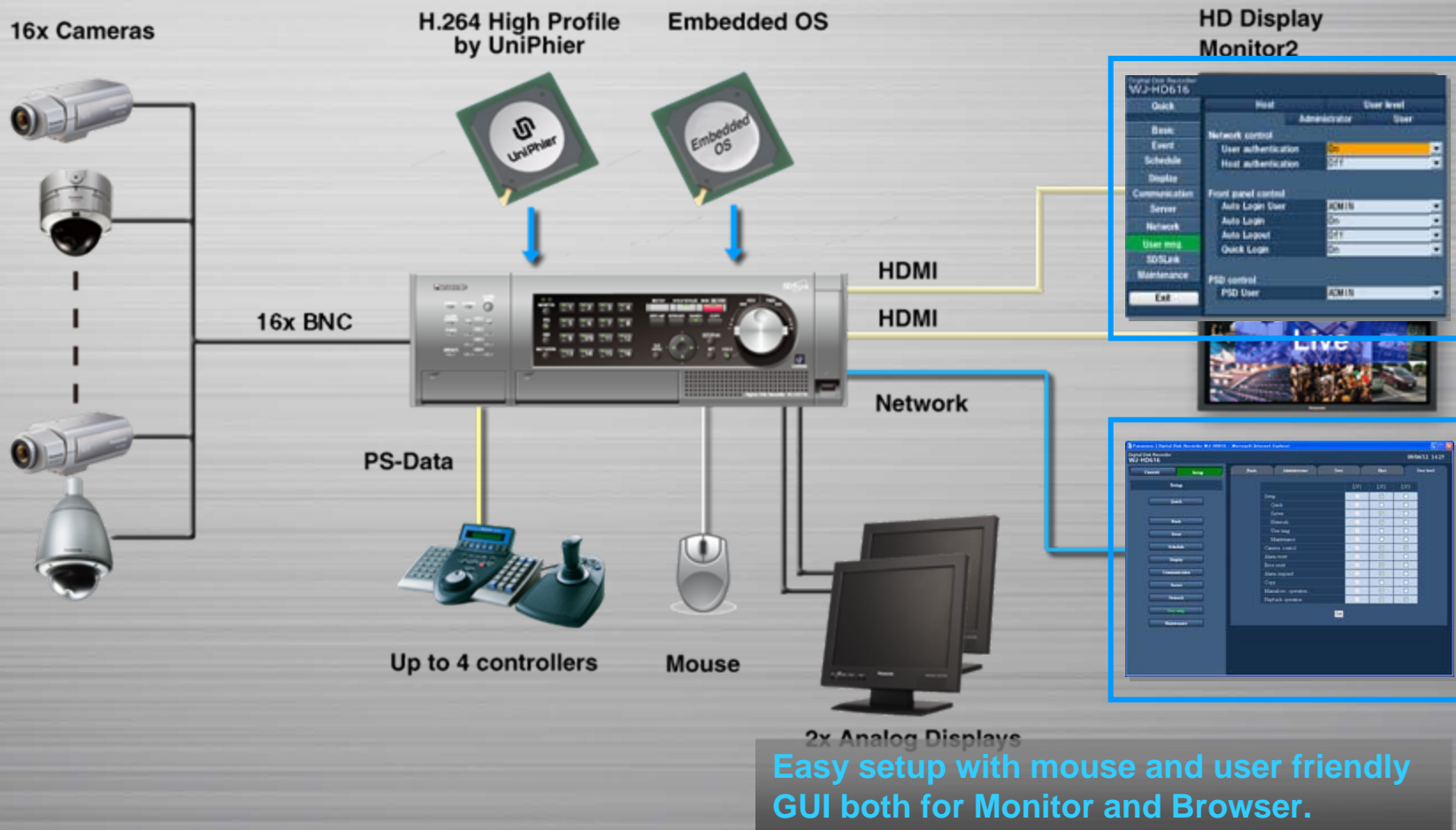
Overview

WJ-HD616/716 is a high performance DVR featuring H.264 High Profile, SD5 link, HDMI output, made possible by Panasonic' s state of the art technology.



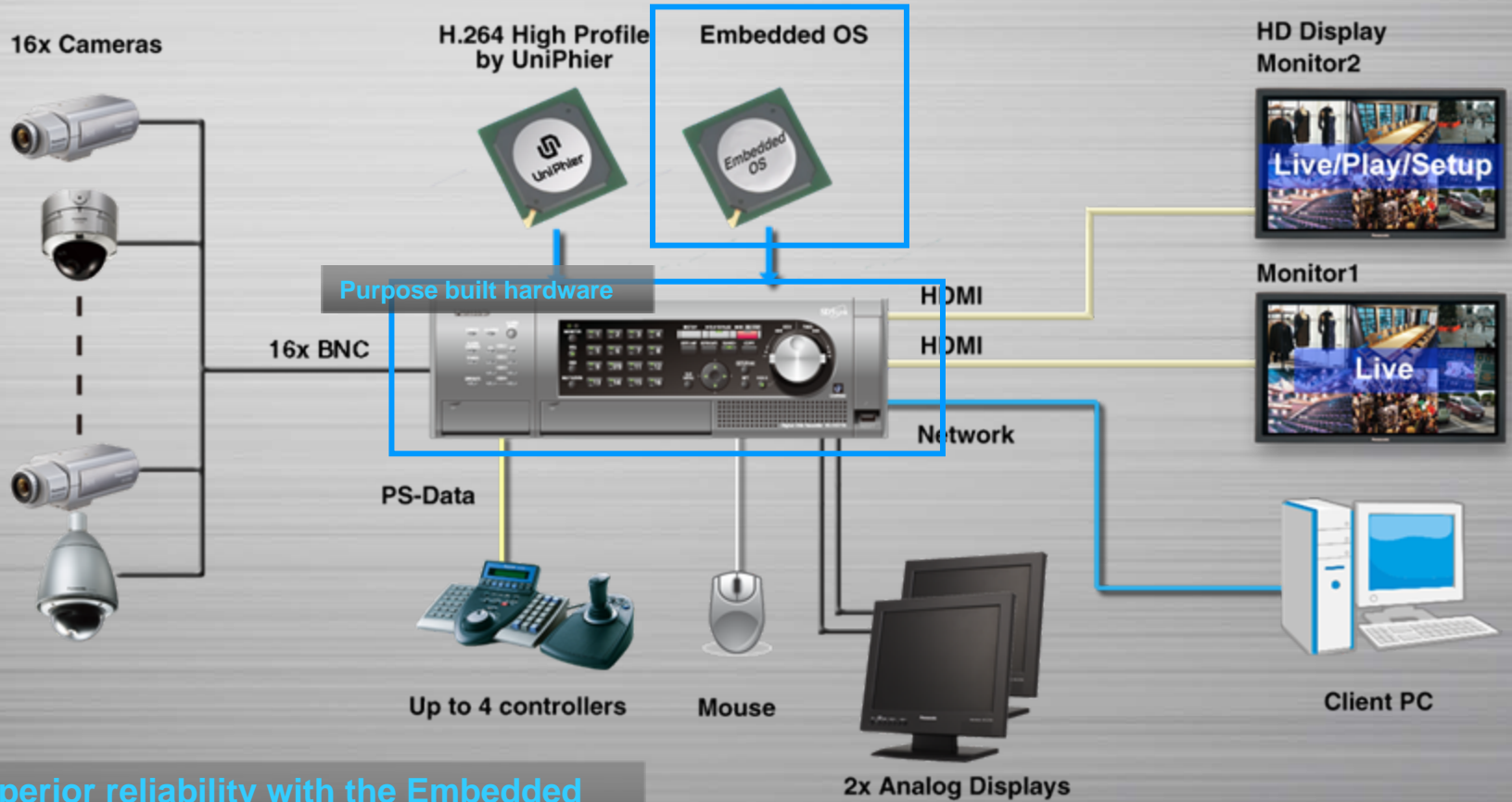
Overview

WJ-HD616/716 is a high performance DVR featuring H.264 High Profile, SD5 link, HDMI output, made possible by Panasonic' s state of the art technology.



Overview

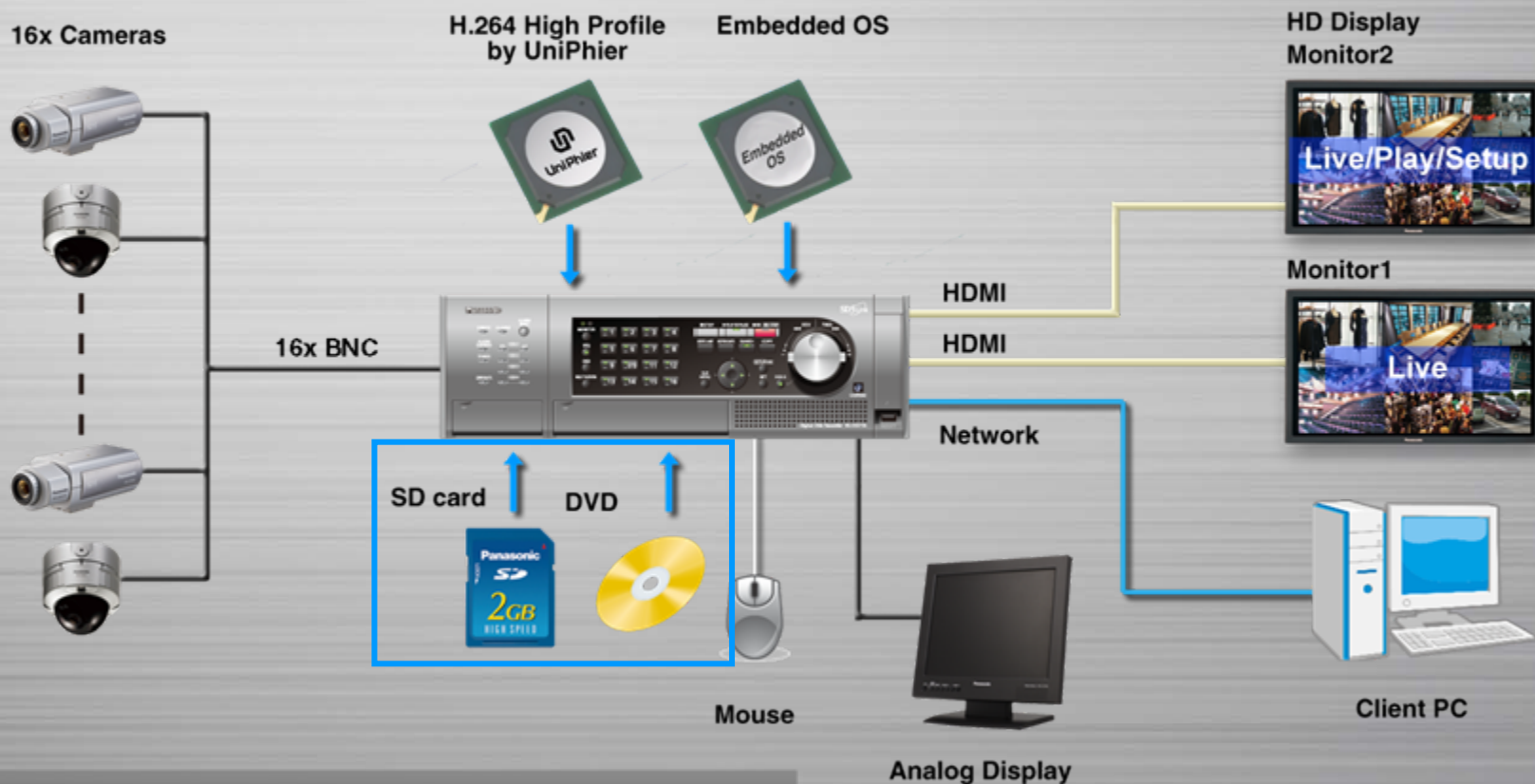
WJ-HD616/716 is a high performance DVR featuring H.264 High Profile, SD5 link, HDMI output, made possible by Panasonic' s state of the art technology.



Superior reliability with the Embedded OS and Purpose built hardware

Overview

WJ-HD616/716 is a high performance DVR featuring H.264 High Profile, SD5 link, HDMI output, made possible by Panasonic' s state of the art technology.

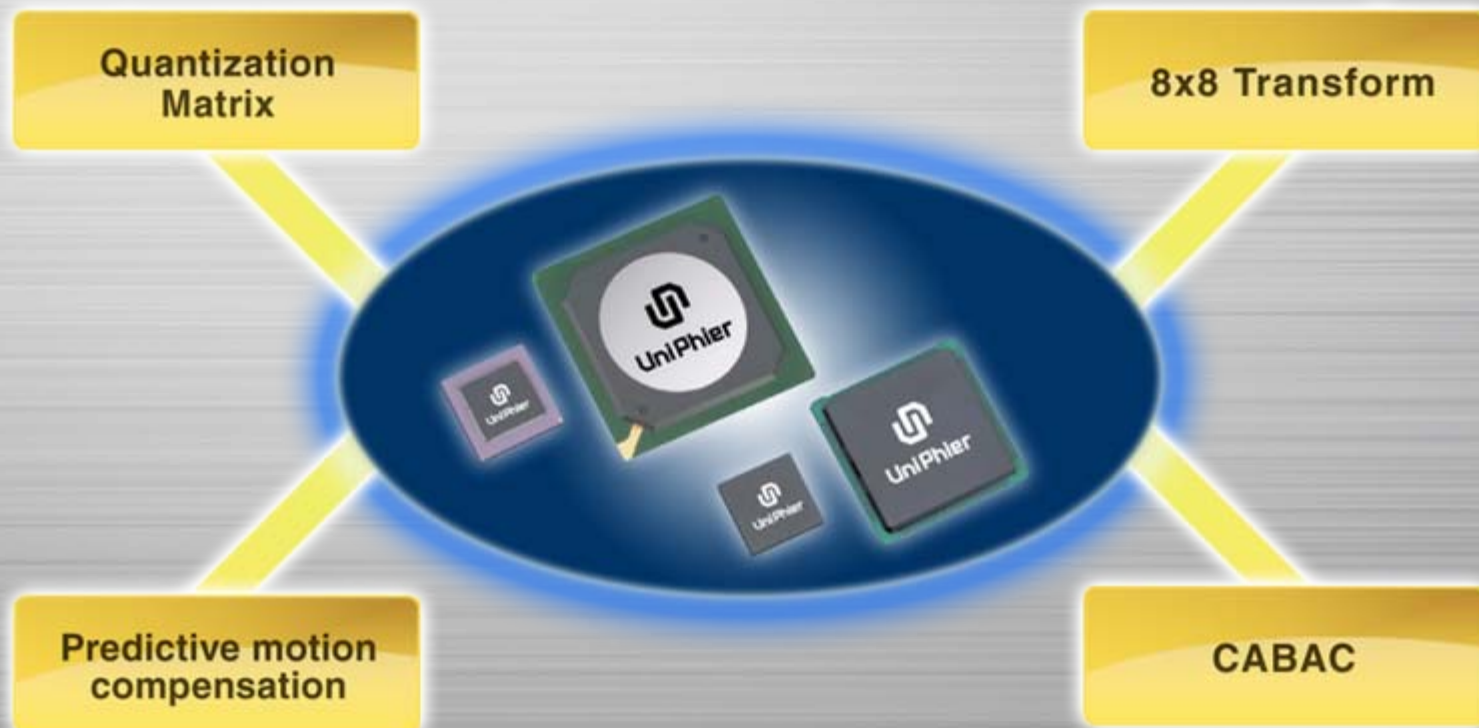


Recorded data can be copied to SD card or DVD.

Note: DVD drive is an option. SD card is not included.

H.264 High Profile

H.264 High Profile encoding with Panasonic Uniphier LSI enables high quality high frame rate recording with smaller data size.



UniPhier H.264 High Profile

H.264 High Profile

H.264 High Profile encoding with Panasonic Uniphier LSI enables high quality real-time video with smaller data size.

Conventional



Unclear detail even with larger data size.

WJ-HD616/716



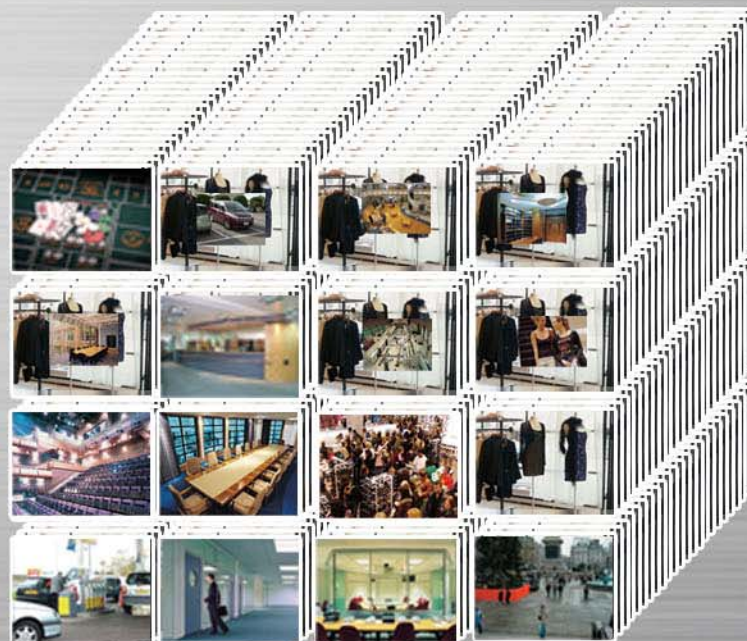
Superior image with 1/3 rd of data size (SF Field).

H.264 Real-time Recording

H.264 High Profile with Panasonic Uniphier LSI enables up to 480ips high frame rate recording, ensuring that the decisive moments are captured.



Conventional: 4x15ips: Total 60ips



WJ-HD716: 16x30ips: Total 480ips

Note: In field mode. HD716 PAL: 16x25ips: Total 400ips, HD616 NTSC: Total 240ips, HD616 PAL: Total 200ips.

H.264 Longer Recording

H.264 High Profile encoding with Panasonic Uniphier LSI enables high quality real-time video with smaller data size, enabling longer recording time.

WJ-HD316



100



WJ-RT416



50



WJ-HD616/716



20

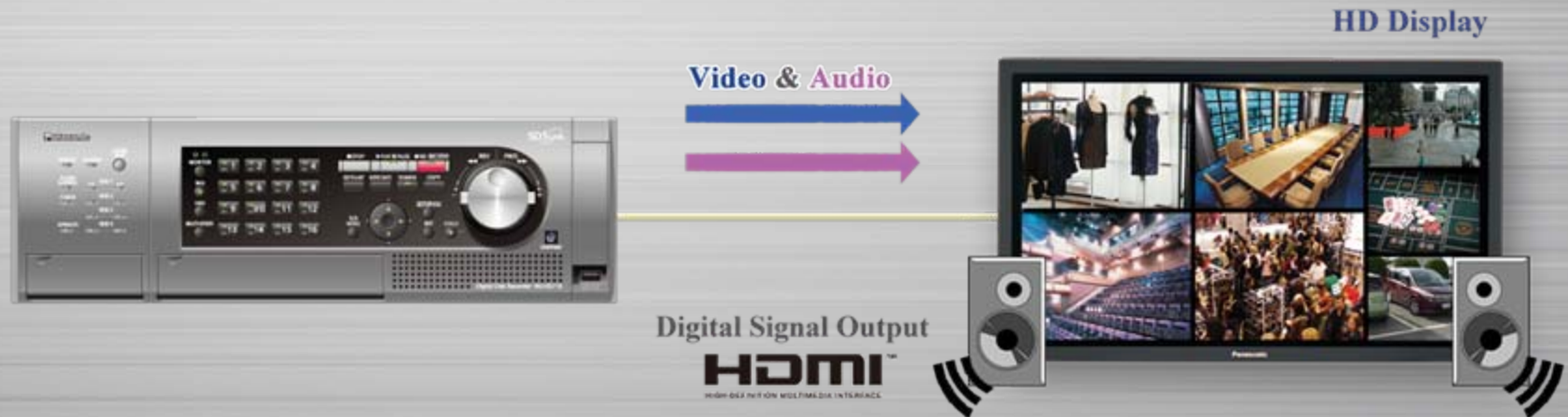


Smaller data size

Longer recording time

HDMI Interface

HDMI interface supporting 1920x1080 display size allows high quality video and audio transmission with single HDMI cable.



Note: Audio output is Monaural.

HDMI Superior Image

HDMI output supplies 720x540 resolution image even for Quad screen, approx four times higher than conventional Quad screens.

Conventional



Unclear detail due to shrank image resolution.

WJ-HD616/716



Superior image with high definition output.

Note: The resolution is number of pixels on the display including the border line.

HDMI Superior Image

Image resolution comparison.

HDMI output supplies 720x540 resolution image even for Quad screen, approx four times higher than conventional Quad screens.

Conventional



Note: The resolution is number of pixels on the display including the border line.

Versatile Display Modes

Versatile display modes include various multiscreens and multiscreen sequences, optimizing the capability of the high definition display.



Versatile Display Modes

Versatile display modes include various multiscreens and multiscreen sequences, optimizing the capability of the high definition display.



Status display indicates various system information.

Versatile Display Modes

Versatile display modes include various multiscreens and multiscreen sequences, optimizing the capability of the high definition display.

16 steps sequences are available using the multiscreen modes

4 split screen A-D



4 split screen WD



7 split screen



8 split screen



9 split screen A/B



9 split screen WD



12 split screen



16 split screen



Note: Full screen of 1440x1080 is also available.

4 Operation Methods

Front buttons

WJ-HD616/716 can be controlled by using 4 operation methods including front panel buttons, mouse, browser GUI and system controller.

Display control

Camera select

Transport control



Camera control

Jog/Shuttle

Function of the cross cursor, set and hold buttons changes depending on the sub menu mode.



4 Operation Methods

Mouse and Sub Menu

WJ-HD616/716 can be controlled by using 4 operation methods including front panel buttons, mouse, browser GUI and system controller.

Operation panel can be displayed on the monitor2 for mouse operation.



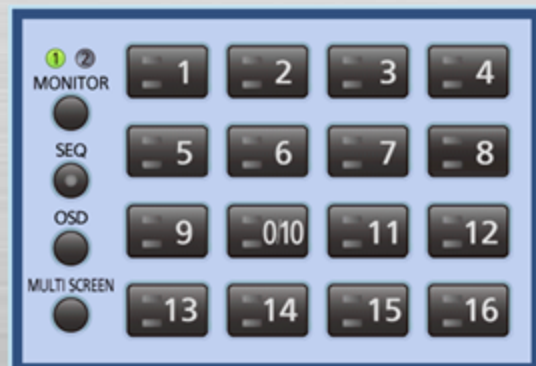
4 Operation Methods

Mouse and Sub Menu

WJ-HD616/716 can be controlled by using 4 operation methods including front panel buttons, mouse, browser GUI and system controller.

Operation panel can be displayed on the monitor2 for mouse operation.

Display control / Camera select



Camera control



Transport control

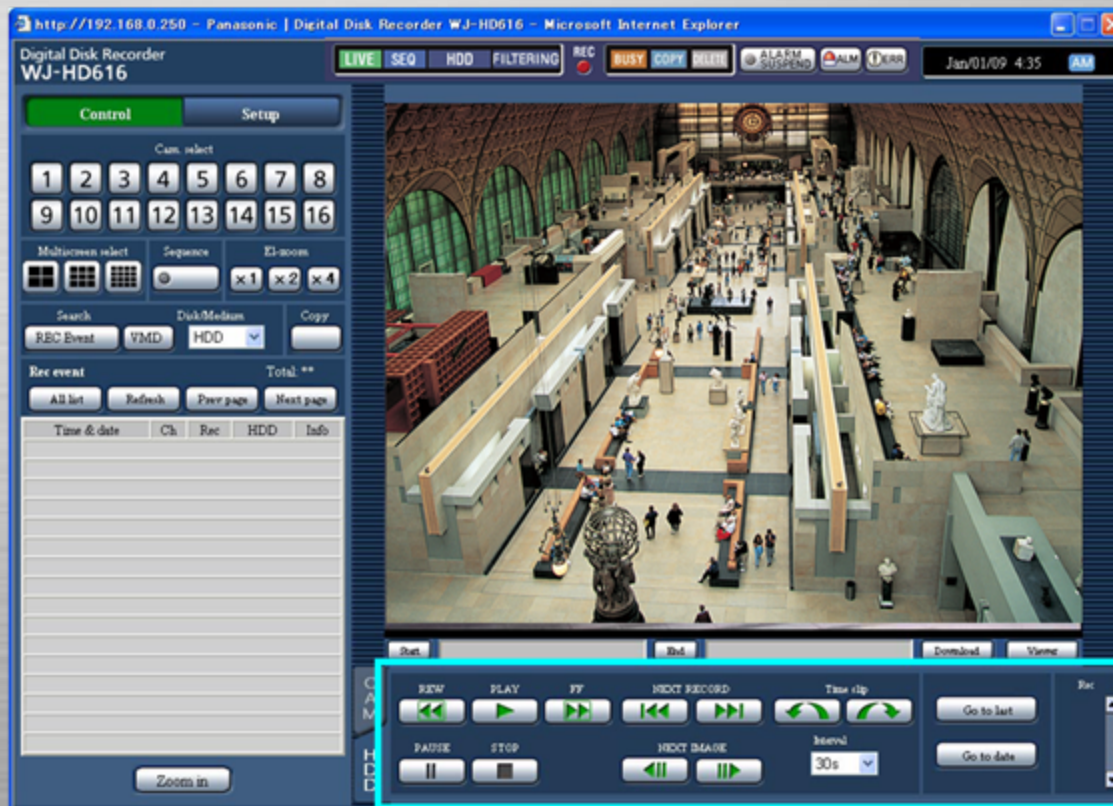


4 Operation Methods

Browser GUI

WJ-HD616/716 can be controlled by using 4 operation methods including front panel buttons, mouse, browser GUI and system controller.

Camera/recorder control and status monitoring can be made with the side panel, camera/recorder control panel and status display.



Recorder control

4 Operation Methods

System controller

WJ-HD616/716 can be controlled by using 4 operation methods including front panel buttons, mouse, browser GUI and system controller.

System controller allows quick and steady control with the Joy stick and the Jog/Shuttle.

Display control

Camera control



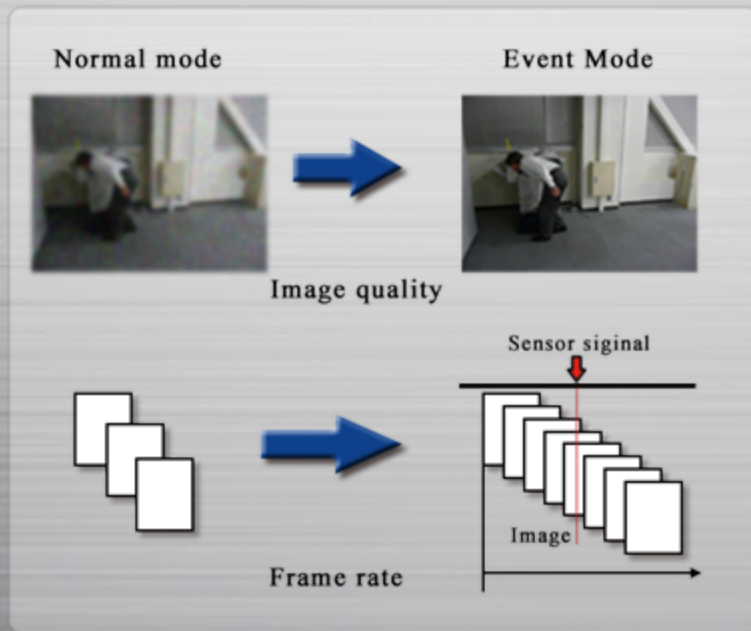
Recorder control

Camera select

Flexible Recording

Flexible Recording Modes: Manual, Schedule, Event (Pre/Post), Emergency.

Schedule mode includes 4 recording programs with individual recording mode for each camera, and 6 time schedules per day.



Flexible Recording

Flexible Recording Modes: Manual, Schedule, Event (Pre/Post), Emergency.

The time table for one day can include 6 time zones where one of the 4 programs can be assigned.



New time table setup >

Schedule	Start	End	Program setup	Event	Alarm message
1	--:--	--:--	PROG1	ON	ON
2	--:--	--:--	PROG1	ON	ON
3	--:--	--:--	PROG1	ON	ON
4	--:--	--:--	PROG1	ON	ON
5	--:--	--:--	PROG1	ON	ON
6	--:--	--:--	PROG1	ON	ON

Flexible Recording

Flexible Recording Modes: Manual, Schedule, Event (Pre/Post), Emergency.

The time table for one day can include 6 time zones where one of the 4 programs can be assigned.



	Time table		Special days		
	0:00	6:00	12:00	18:00	24:00
Mon					
Tue					
Wed					
Thu					
Fri					
Sat					
Sun					
Daily					
Ext.					

PROG1 PROG2 PROG3 PROG4

Flexible Recording

Flexible Recording Modes: Manual, Schedule, Event (Pre/Post), Emergency.

Each program includes individual recording mode for Manual, Schedule and Event.



Program setup

PROG1

Resolution

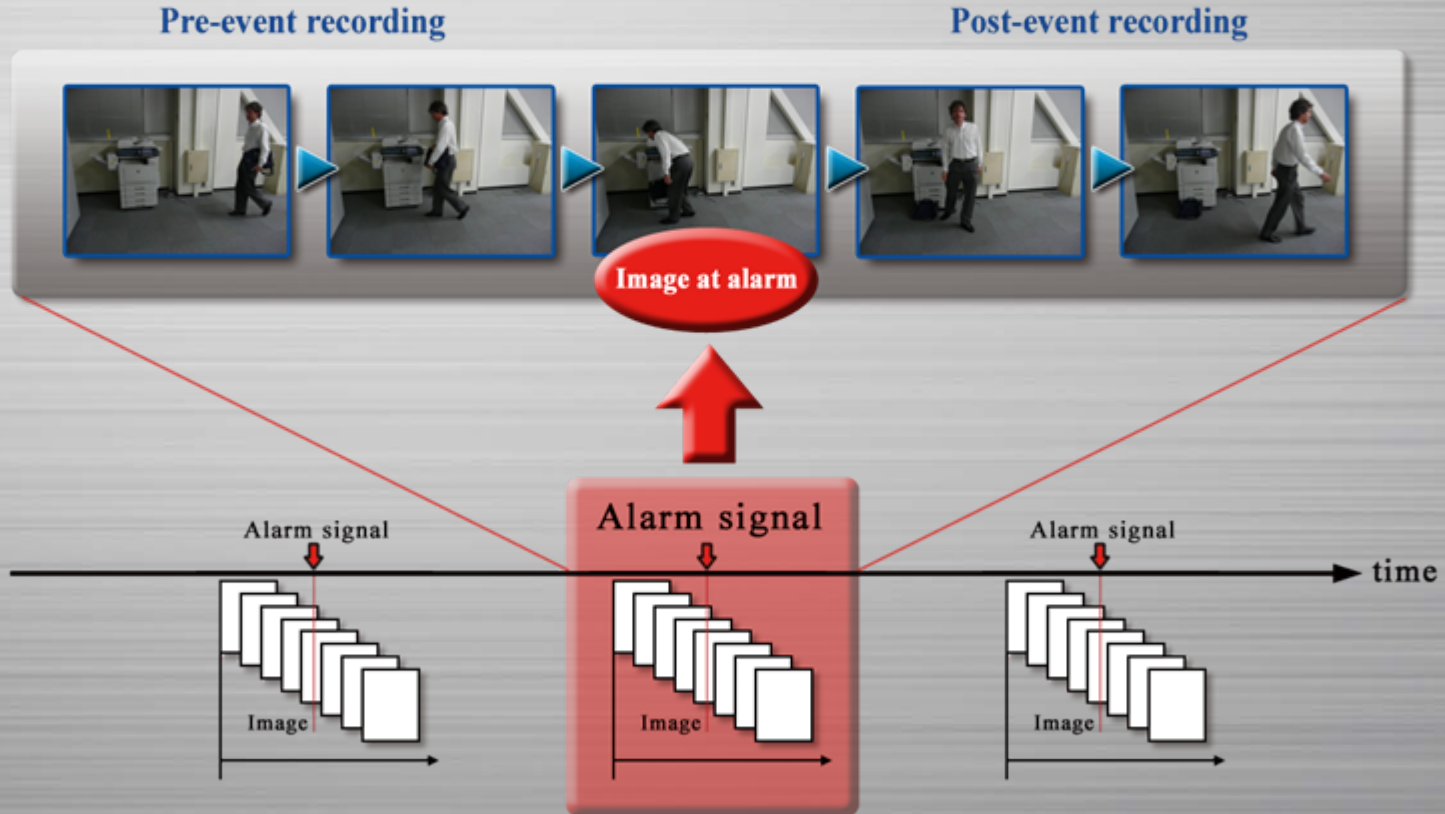
Cam.	Manual rec.		Schedule rec.		Event rec.		Pre-event Duration	Post-event Duration
	Quality	ips	Quality	ips	Quality	ips		
CAM1	FQ	15	FQ	Off	FQ	15	0s	30s
CAM2	FQ	15	FQ	Off	FQ	15	0s	30s
CAM3	FQ	15	FQ	Off	FQ	15	0s	30s
CAM4	FQ	15	FQ	Off	FQ	15	0s	30s
CAM5	FQ	15	FQ	Off	FQ	15	0s	30s
CAM6	FQ	15	FQ	Off	FQ	15	0s	30s
CAM7	FQ	15	FQ	Off	FQ	15	0s	30s
CAM8	FQ	15	FQ	Off	FQ	15	0s	30s

CAM9-16

Event Recording

Event recording mode provides effective use of disk space.

Images prior to the alarm can be recorded so that the critical moment is less likely lost.



Video Motion Detection

WJ-HD616/716 is equipped with a built in VMD function so that a motion in the specified areas can easily be detected as an alarm.

Up to 4 detection areas can easily be specified by dragging the mouse on the image.



Video Motion Detection

WJ-HD616/716 is equipped with a built in VMD function so that a motion in the specified areas can easily be detected as an alarm.

Up to 4 detection areas can easily be specified by dragging the mouse on the image.



Filtered Search

Desired record can be searched by various criterias such as

REC Event Search

Time & date

Start JAN / 1 / 09 AM 12 : 00 : 00

End JAN / 1 / 09 AM 12 : 00 : 00

REC event

- All
- Manual
- Schedule
- Emergency
- Video Loss
- Terminal alarm
- Command alarm
- VMD
- Site alarm
- i-VMD
 - Terminal
 - Scene change
 - Object Det.
 - Motion
 - Direction
 - Stay

Camera

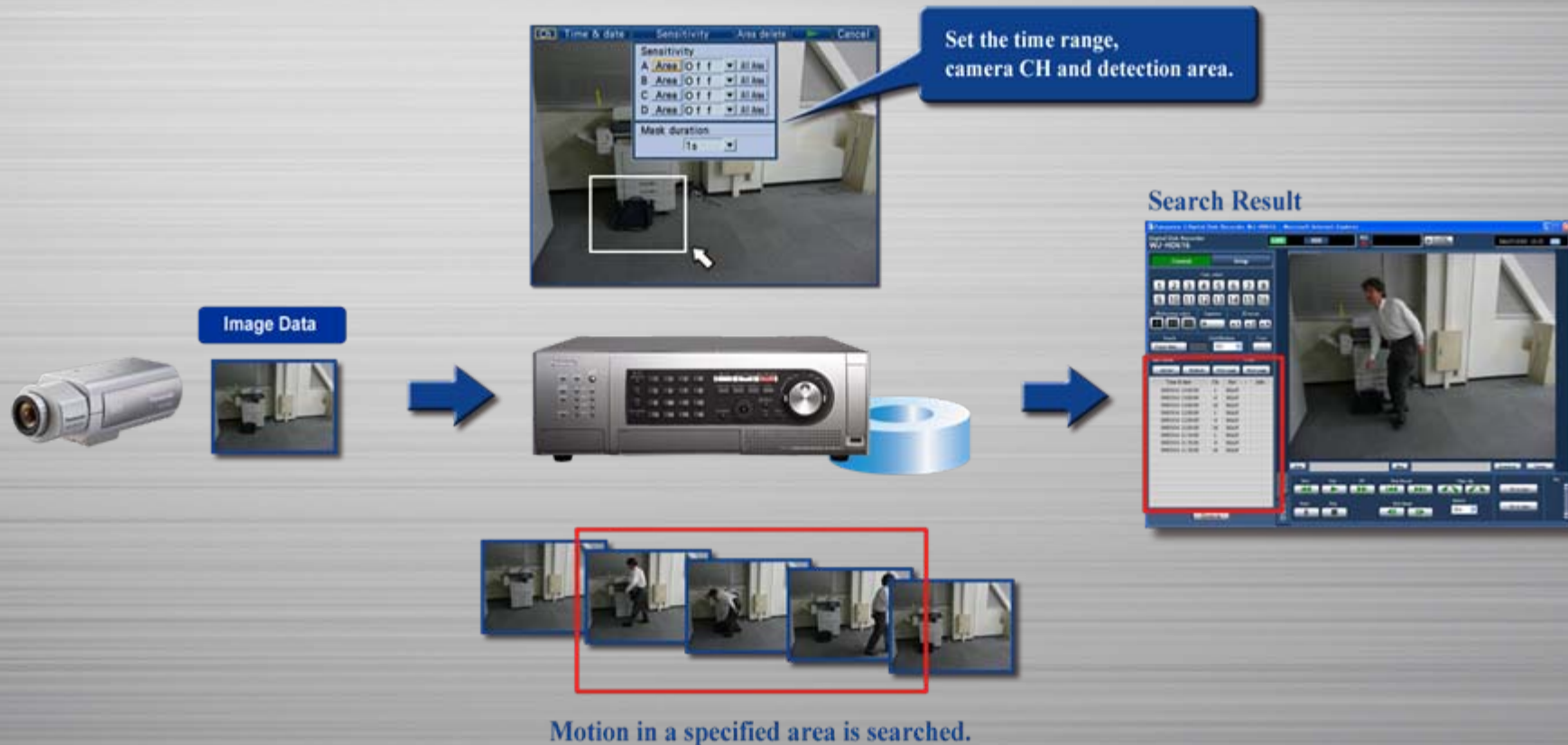
- All
- Cam. 1
- Cam. 2
- Cam. 3
- Cam. 4
- Cam. 5
- Cam. 6
- Cam. 7
- Cam. 8
- Cam. 9
- Cam. 10
- Cam. 11
- Cam. 12
- Cam. 13
- Cam. 14
- Cam. 15
- Cam. 16

OK Cancel

Playback VMD Search

Motion in the specified areas can easily be searched by analyzing recorded images.

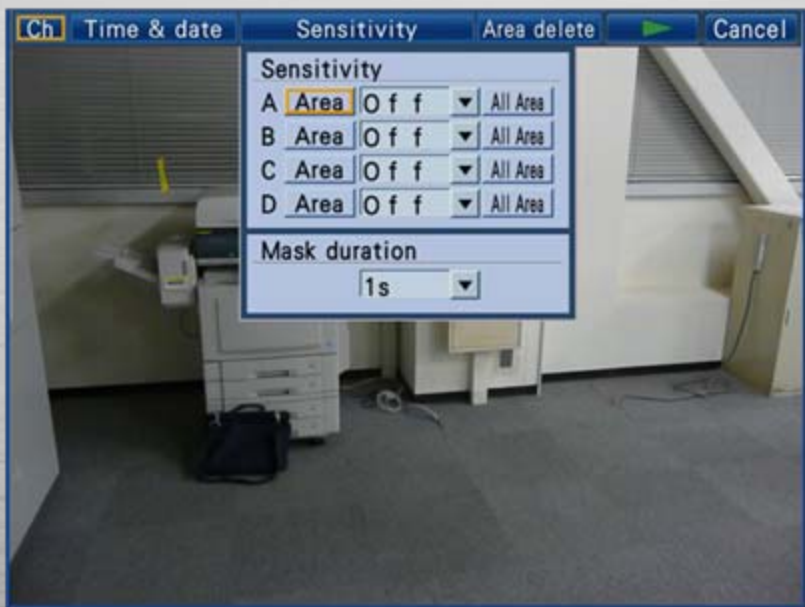
Up to 4 detection areas can easily be specified by dragging the mouse on the image.



Playback VMD Search

Motion in the specified areas can easily be searched by analyzing recorded images.

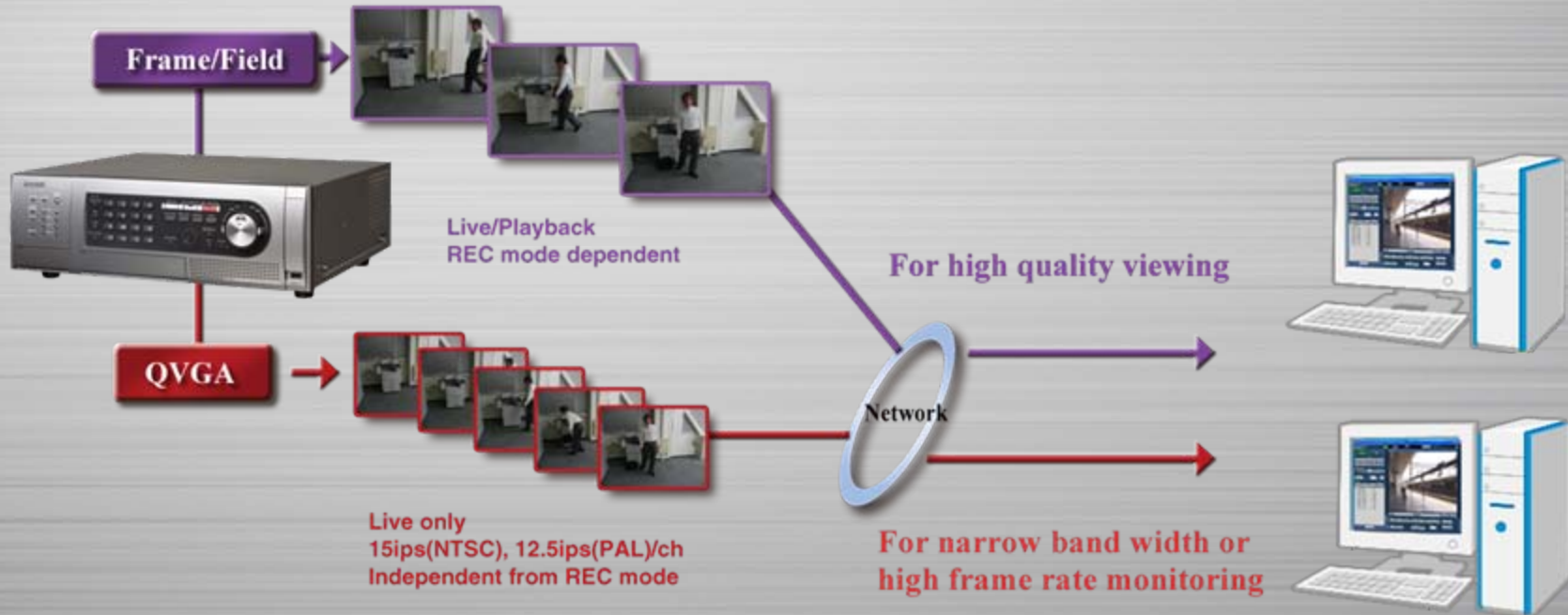
Up to 4 detection areas can easily be specified by dragging the mouse on the image.



Flexible Network Output

Two different quality modes are available for network video stream
Frame/Field for precise monitoring and QVGA for reduced traffic.

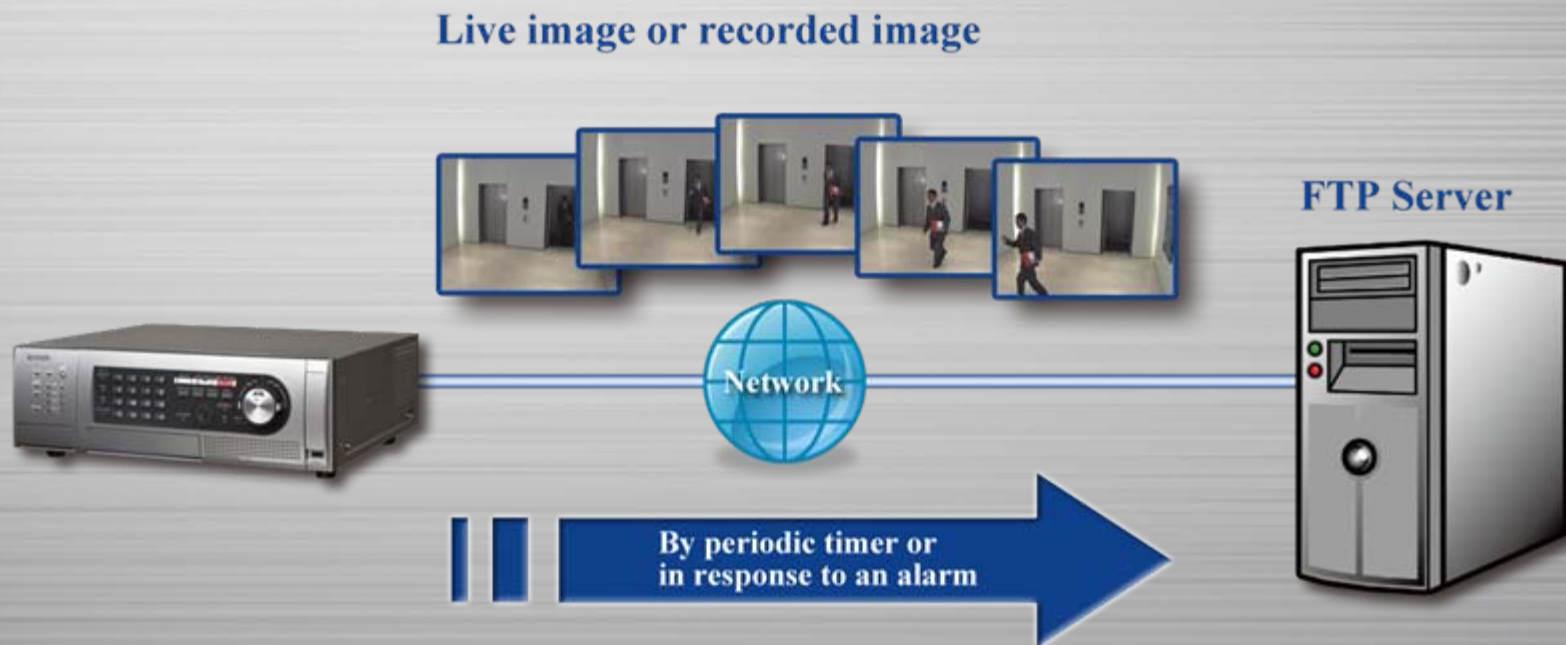
Spot or Quad sequence is available for the network output.



Notes: Frame/Field (recording dependant) or QVGA is selectable and applied to all users.
When displaying multiscreen, QVGA is used for the user even when the setup is frame/field.
Playback images depend on the recorded quality.
WJ-HD616 QVGA mode is up to 7.5ips(NTSC),6.3ips(PAL). Frame rate in Frame/Field mode depends on the recording rate.

FTP Client

**FTP client function enables periodic live image transfer to an FTP server.
Image transfer in response to an alarm is also available.**



Record Download

Recorded video and audio data can be downloaded to a PC via network.

Downloadable viewer software allows playback of video and audio of the downloaded record.



Multi-site System

Multi-recorder-Multi-site with analog digital hybrid system can be made with the optional WV-ASM100 i-Pro Management Software.

WV-ASM100 enables large scale multi-site surveillance system with management efficiency and user-friendly operation.

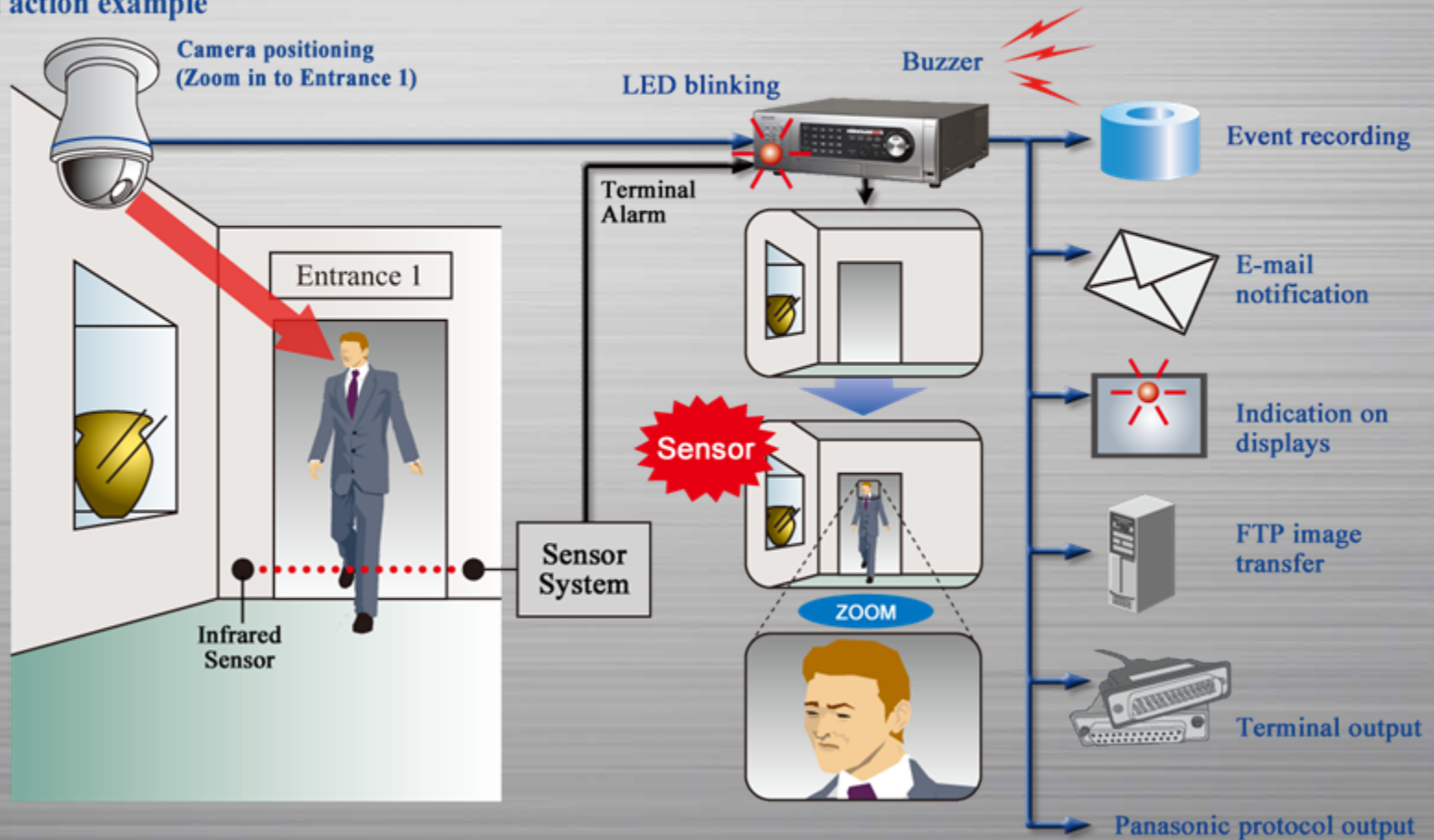


Flexible Alarm Handling

Various alarm sources and actions are available for flexible alarm control.

Alarm sources include VMD, 16x Terminal inputs, 16x Camera alarms including i-VMD, Video loss and alarm command.

Alarm action example



Easy Setup Menu

Easy to understand multilingual GUI setup menu allows quick and easy system setup.

OSD setup menu and browser setup menu are common structure with i-Pro cameras including category selection panel, sub item tab and setup item area,

OSD Setup Menu

Digital Disk Recorder
WJ-HD616

Quick	Basic	Administrator	User
	Host		User level
Basic			LV1 LV2 LV3
Event	Setup		<input checked="" type="checkbox"/> <input checked="" type="checkbox"/> <input type="checkbox"/>
Schedule	Quick		<input checked="" type="checkbox"/> <input type="checkbox"/> <input type="checkbox"/>
Display	Server		<input checked="" type="checkbox"/> <input checked="" type="checkbox"/> <input type="checkbox"/>
Communication	Network		<input checked="" type="checkbox"/> <input checked="" type="checkbox"/> <input type="checkbox"/>
Server	User mng.		<input checked="" type="checkbox"/> <input type="checkbox"/> <input type="checkbox"/>
Network	Maintenance		<input checked="" type="checkbox"/> <input type="checkbox"/> <input type="checkbox"/>
User mng.	Camera control		<input checked="" type="checkbox"/> <input checked="" type="checkbox"/> <input checked="" type="checkbox"/>
SD5Link	Alarm reset		<input checked="" type="checkbox"/> <input checked="" type="checkbox"/> <input type="checkbox"/>
Maintenance	Error reset		<input checked="" type="checkbox"/> <input checked="" type="checkbox"/> <input type="checkbox"/>
	Alarm suspend		<input checked="" type="checkbox"/> <input checked="" type="checkbox"/> <input type="checkbox"/>
	Copy		<input checked="" type="checkbox"/> <input type="checkbox"/> <input type="checkbox"/>
	Manual rec. operation		<input checked="" type="checkbox"/> <input checked="" type="checkbox"/> <input type="checkbox"/>
	Playback operation		<input checked="" type="checkbox"/> <input checked="" type="checkbox"/> <input checked="" type="checkbox"/>

Browser Setup Menu

Panasonic | Digital Disk Recorder WJ-HD616 - Microsoft Internet Explorer
09/06/12 14:25

Digital Disk Recorder
WJ-HD616

Control Setup

Basic Administrator User Host User level

	LV1	LV2	LV3
Setup	<input type="checkbox"/>	<input type="checkbox"/>	<input type="checkbox"/>
Quick	<input type="checkbox"/>	<input type="checkbox"/>	<input type="checkbox"/>
Basic	<input type="checkbox"/>	<input checked="" type="checkbox"/>	<input type="checkbox"/>
Server	<input type="checkbox"/>	<input checked="" type="checkbox"/>	<input type="checkbox"/>
Network	<input type="checkbox"/>	<input checked="" type="checkbox"/>	<input type="checkbox"/>
User mng.	<input type="checkbox"/>	<input type="checkbox"/>	<input type="checkbox"/>
Maintenance	<input type="checkbox"/>	<input type="checkbox"/>	<input type="checkbox"/>
Camera control	<input type="checkbox"/>	<input checked="" type="checkbox"/>	<input checked="" type="checkbox"/>
Alarm reset	<input type="checkbox"/>	<input checked="" type="checkbox"/>	<input type="checkbox"/>
Error reset	<input type="checkbox"/>	<input checked="" type="checkbox"/>	<input type="checkbox"/>
Alarm suspend	<input type="checkbox"/>	<input checked="" type="checkbox"/>	<input type="checkbox"/>
Copy	<input type="checkbox"/>	<input type="checkbox"/>	<input type="checkbox"/>
Manual rec. operation	<input type="checkbox"/>	<input checked="" type="checkbox"/>	<input checked="" type="checkbox"/>
Playback operation	<input type="checkbox"/>	<input checked="" type="checkbox"/>	<input checked="" type="checkbox"/>

Easy Setup Menu

Easy to understand multilingual GUI setup menu allows quick and easy system setup.

OSD setup menu can be operated with the front panel buttons, jog dial and mouse.

Parameter change.



Cursor movement and parameter change.



OSD Setup Menu



Setup menu consists of category selection panel, sub item tab and setup item area, common structure with browser setup menu and i-Pro cameras

31TB HDD Capacity

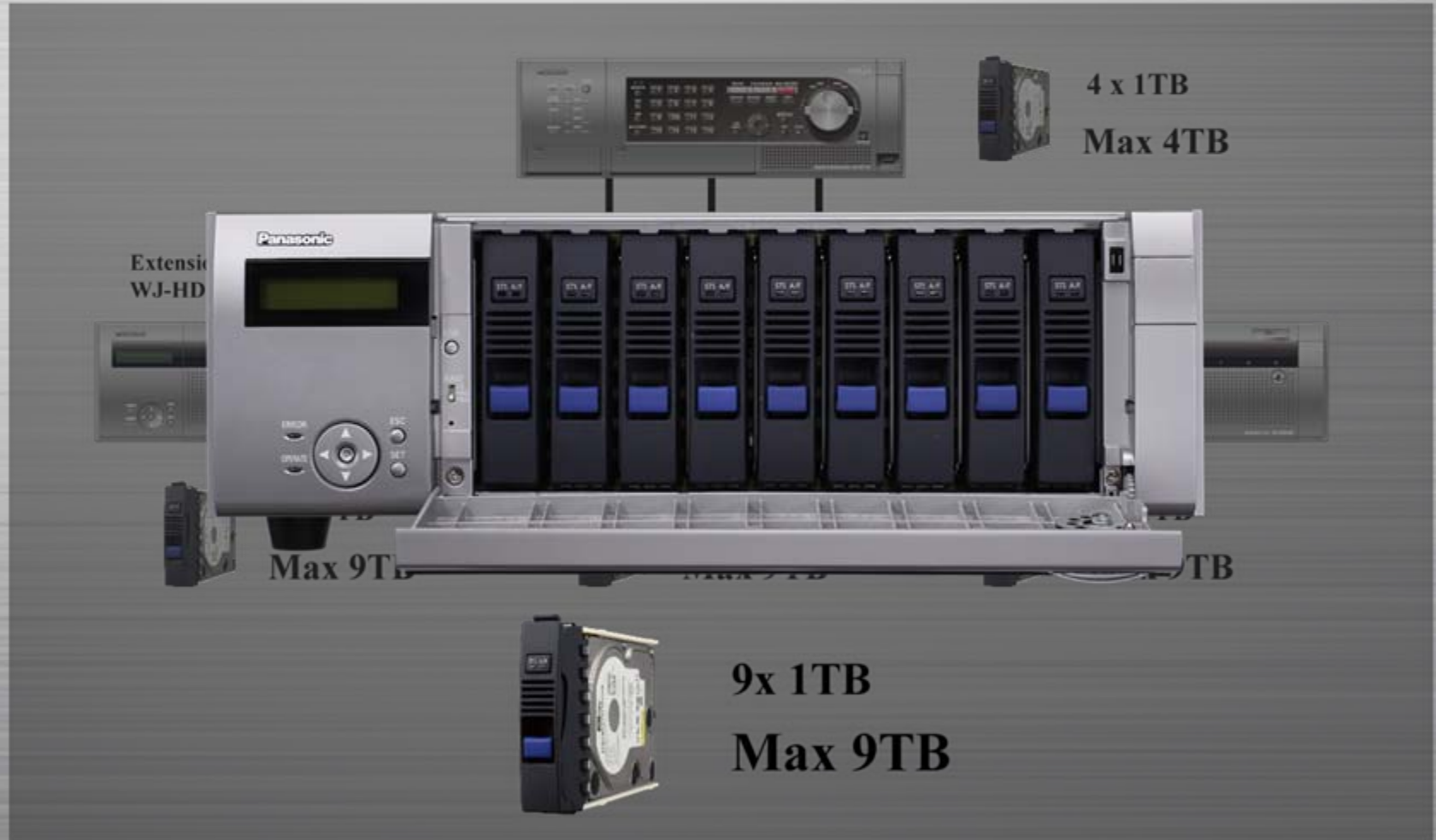
Up to 31 TB with 4 HDD slots in the main unit and three WJ-HDE400 Hard Disk Extension Units each with 9 HDD slots.



Max 31TB
With 1TB HDD

31TB HDD Capacity

Up to 31 TB with 4 HDD slots in the main unit and three WJ-HDE400 Hard Disk Extension Units each with 9 HDD slots.



RAID Redundancy

With the RAID redundancy, even if one (RAID5) or two (RAID6) HDDs are damaged, recorded images can still be recovered.



Note: Optional RAID5/6 board WJ-HDB601 is required.
Minimum 3 HDDs are required for RAID5. Minimum 4 HDDs are required for RAID6.

RAID Redundancy

With the RAID redundancy, even if one (RAID5) or two (RAID6) HDDs are damaged, recorded images can still be recovered.



Note: Optional RAID5/6 board WJ-HDB601 is required.
Minimum 3 HDDs are required for RAID5. Minimum 4 HDDs are required for RAID6.

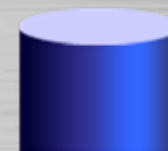
SD5 Link with i-VMD and Filtered search function accelerates the disk saving and search speed.



Conventional

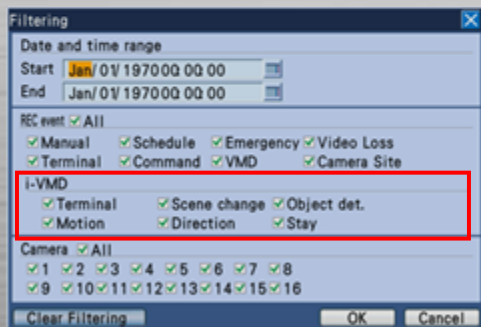


i-VMD



Further disk saving by accurate detection

Filtered Search



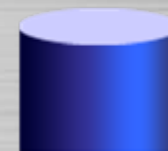
Quicker search by specifying i-VMD type

SD5 Link with i-VMD and Filtered search function accelerates the disk saving and search speed.



Conventional

i-VMD



Further disk saving by accurate detection

Filtering

Date and time range
Start Jan/ 01/ 1970 00 00 00
End Jan/ 01/ 1970 00 00 00

REC event All
 Manual Schedule Emergency Video Loss
 Terminal Command VMD Camera Site

i-VMD
 Terminal Scene change Object det.
 Motion Direction Stay

Camera All
 1 2 3 4 5 6 7 8
 9 10 11 12 13 14 15 16

Clear Filtering OK Cancel



Quicker search by specifying i-VMD type

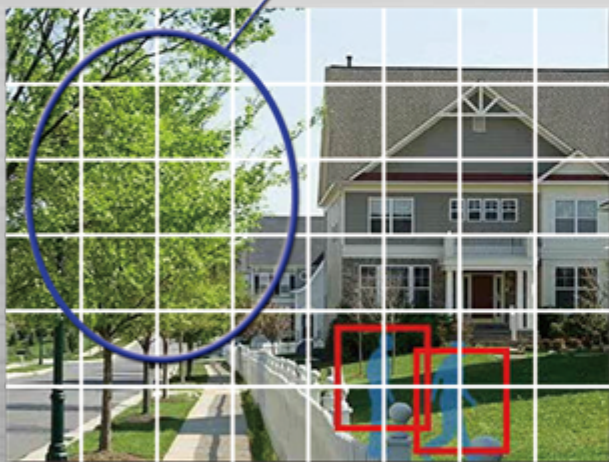
i-VMD: Intelligent VMD

High resolution detection area and advanced motion analyze algorithm enables accurate motion detection.

Up to two intruder detection areas and two object abandonment/removal detection areas can be programmed.

Conventional

Back ground movements such as tree, rain, shadow, wave are wrongly detected.



8 x 6 detection setup areas

i-VMD

i-VMD learns back ground movements and only subjective movement can be detected.



320x240 detection resolution

Note: This is function of the SD5 cameras.

i-VMD: Intruder detection

SD5 Link
Super Dynamic

**Up to 4 objects detected in up to 2 detection areas can be traced simultaneously.
Depth correction allows more accurate detection when the scene includes deeper depth.**



A person is approaching the fence.



Intruders are climbing the fence.



Intruders are detected and indicated by red frames.

Note: This is a function of the SD5 cameras.

Abandoned object can be detected and indicated with the red frame to alert a malicious attempt.



A person is leaving a bag.



The abandoned bag is detected and indicated by red frame.

Note: This is a function of the SD5 cameras.

i-VMD: Object Removal

SD5 Link
Super Dynamic

Removed object in the specified area can be detected and indicated with the red frame to alert a theft.



A person is approaching to the clothes.



The stolen cloth is detected and indicated by red frame.

Note: This is a function of the SD5 cameras.

Scene Change Detection

SD5 Link
Super Dynamic

Scene change detection can detect interference to the camera and sends an alarm.

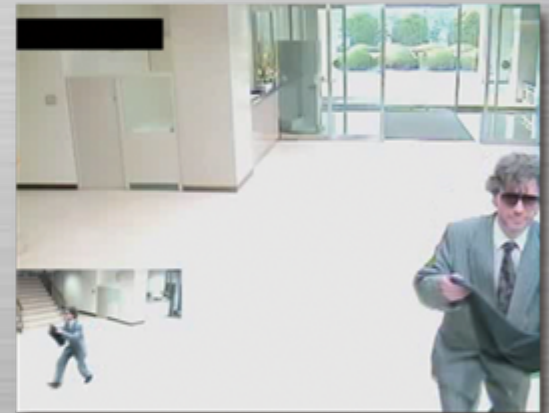
It can detect manual change in the camera angle, removal of the camera lens, defocus, blockage of the camera lens with cloth or paint.



Lens defocused



Splay painted



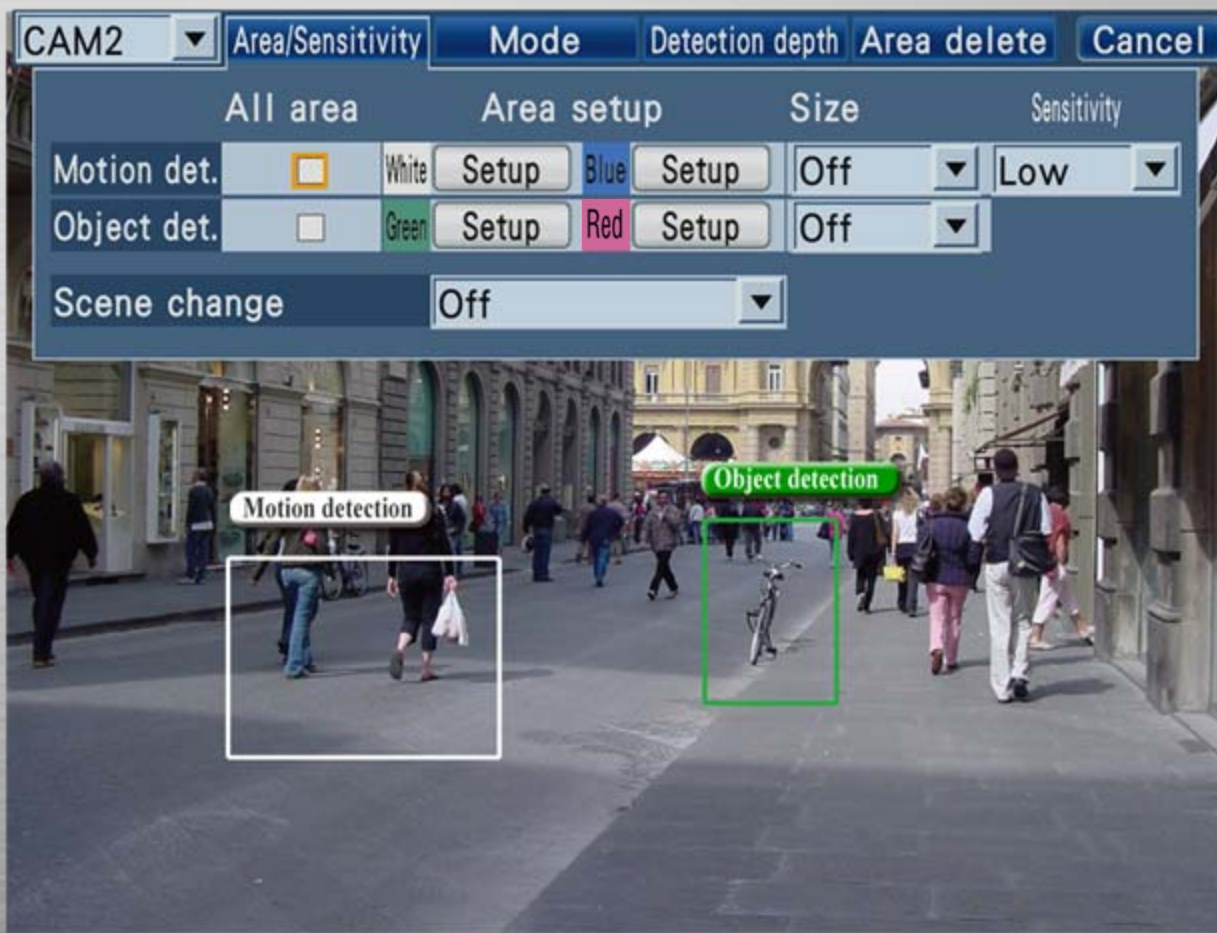
Lens covered by cloth

Note: This is a function of the SD5 cameras.

i-VMD Setup

With WJ-HD616/716, i-VMD setup can easily be made by using mouse and GUI.

Up to two motion detection areas and two object detection areas can be set by dragging rectangular areas



Note: This operation can be made with the OSD setup menu on monitor2, not with the browser GUI.

i-VMD Setup

With WJ-HD616/716, i-VMD setup can easily be made by using mouse and GUI.

Depth correction can be set by dragging two rectangular areas corresponding to the proportion of each position.



Note: This operation can be made with the OSD setup menu on monitor2, not with the browser GUI.

Camera Data Backup

SD5 Link
Super Dynamic

Setup data of the SD5 cameras can be downloaded to the recorder and the saved data can be uploaded, saving time when replacing cameras.



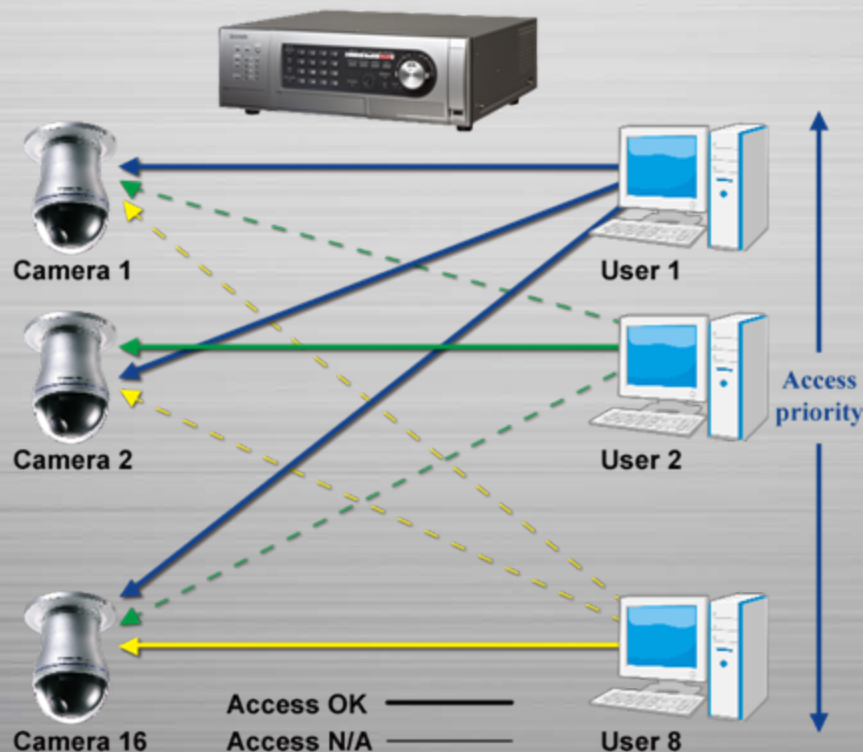
Note: Only with SD5 cameras. The setup data can only be used for the same model.

User Management

Sophisticated user management includes User/Host authentication, 3 user levels, 16 user priorities and User-Camera View/Control partitioning.

Up to 8 users can monitor images and control WJ-HD616/716 simultaneously.

User - Camera View/Control partitioning



【User】 Setup Menu

Digital Disk Recorder
WJ-HD616

Quick	Host		User level	
	Basic	Administrator	User	
Basic	User name		[Dropdown]	
Event	Password		[Input]	
Schedule	Level		LV1 [Dropdown]	
Display	Access priority		1 [Dropdown]	
Communication	Default screen		[Dropdown]	
Server				
Network	Camera partitioning			
User mng.	CAM1	[Dropdown]	CAM5	View/Operate [Dropdown]
SD5Link	CAM2	View/Operate [Dropdown]	CAM6	View/Operate [Dropdown]
Maintenance	CAM3	View/Operate [Dropdown]	CAM7	View/Operate [Dropdown]
	CAM4	View/Operate [Dropdown]	CAM8	View/Operate [Dropdown]

Exit [Button] ▲ Prev page 1/2 Next page ▼ [Button] Delete [Button] Edit [Button] Back [Button]

Note: Up to 16 Users and up to 16 PCs (Host) can be registered.

User Management

Sophisticated user management includes User/Host authentication, 3 user levels, 16 user priorities and User-Camera View/Control partitioning.

Up to ? users can monitor images and control WJ-HD616/716 simultaneously.

3 User Levels example

- Setup
 - Quick
 - Camera
 - Server
 - Network
 - User mng.
 - Maintenance
- Camera control
- Alarm reset
- Error reset
- Alarm suspend
- Copy
- Manual rec. operation
- Playback operation



- Camera control
- Alarm reset
- Error reset
- Alarm suspend
- Copy
- Manual rec. operation
- Playback operation



- Camera control
- Event log status
- Playback operation



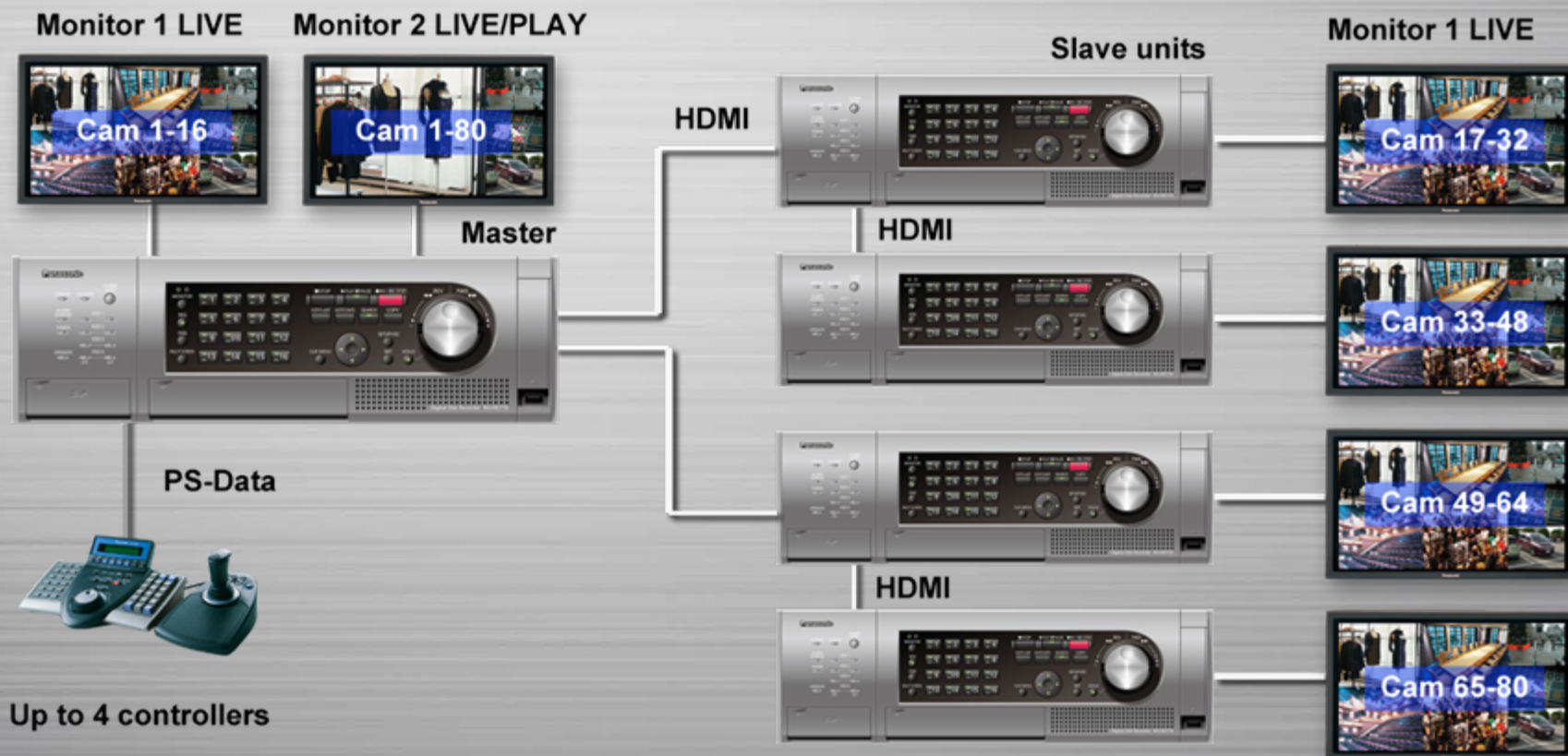
【User level】 Setup Menu

	LV1	LV2	LV3
Setup	<input type="checkbox"/>	<input checked="" type="checkbox"/>	<input type="checkbox"/>
Quick	<input type="checkbox"/>	<input type="checkbox"/>	<input type="checkbox"/>
Server	<input type="checkbox"/>	<input checked="" type="checkbox"/>	<input type="checkbox"/>
Network	<input type="checkbox"/>	<input checked="" type="checkbox"/>	<input type="checkbox"/>
User mng.	<input type="checkbox"/>	<input type="checkbox"/>	<input type="checkbox"/>
Maintenance	<input type="checkbox"/>	<input type="checkbox"/>	<input type="checkbox"/>
Camera control	<input type="checkbox"/>	<input checked="" type="checkbox"/>	<input checked="" type="checkbox"/>
Alarm reset	<input type="checkbox"/>	<input checked="" type="checkbox"/>	<input type="checkbox"/>
Error reset	<input type="checkbox"/>	<input checked="" type="checkbox"/>	<input type="checkbox"/>
Alarm suspend	<input type="checkbox"/>	<input checked="" type="checkbox"/>	<input type="checkbox"/>
Copy	<input type="checkbox"/>	<input type="checkbox"/>	<input type="checkbox"/>
Manual rec. operation	<input type="checkbox"/>	<input checked="" type="checkbox"/>	<input type="checkbox"/>
Playback operation	<input type="checkbox"/>	<input checked="" type="checkbox"/>	<input checked="" type="checkbox"/>

Cascade System

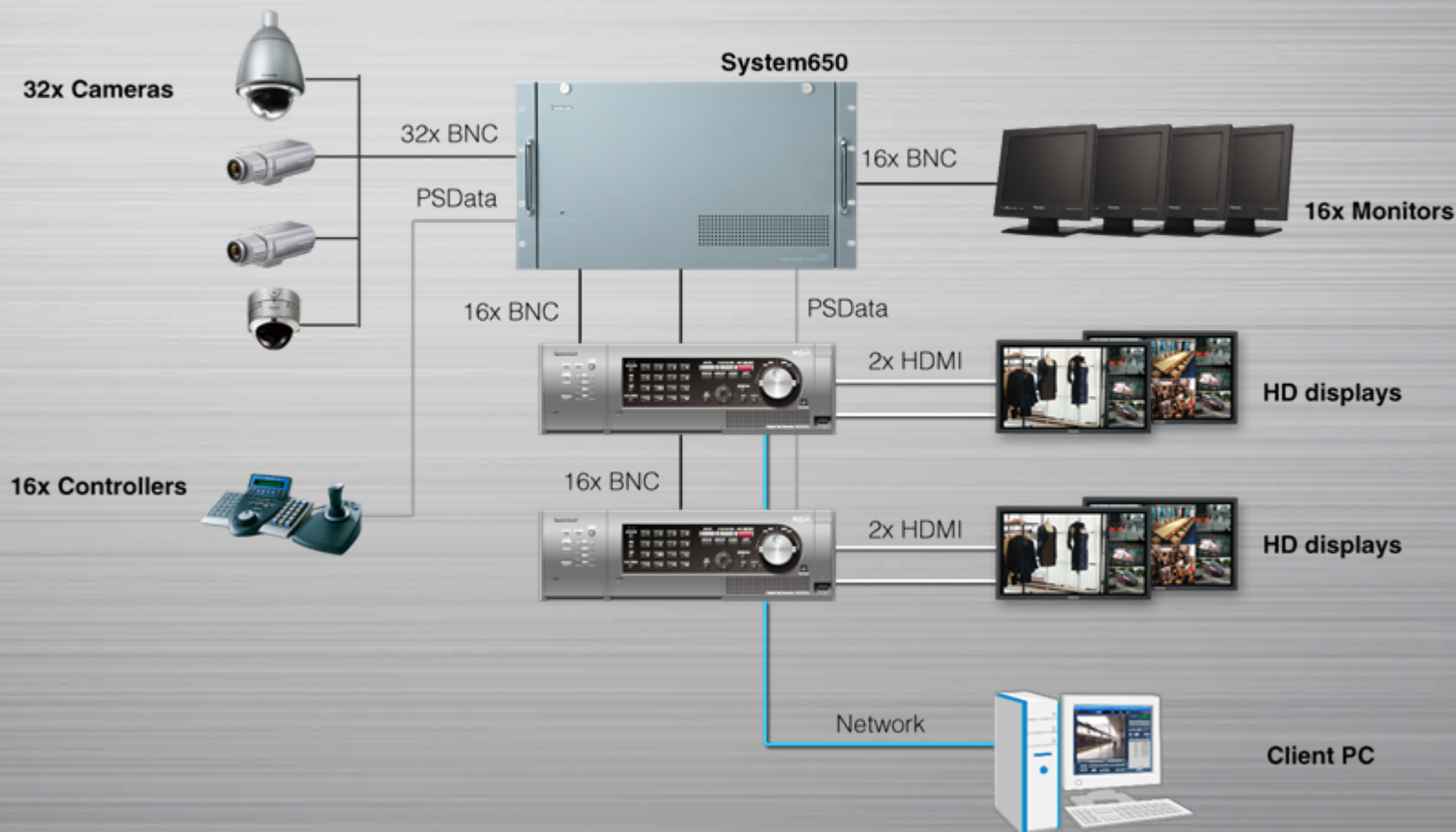
Master-slave connection with 5 main units allows simple system expansion of up to 80 cameras. All cameras can be monitored with the master unit.

Audio from the slave units can also be monitored through the master unit HDMI output.



Matrix System

**Cameras, Matrix and Recorders can be controlled seamlessly with the controllers.
Cameras can also be controlled from the NW client via the recorders.**



SD5 Family

SD5 family line up including SD5 cameras, WJ-HD616/716 and LCD monitors ensure the quality and usability of total surveillance system.

Capturing



WV-CP500/504



WV-CW504

Superior Image
Intelligence
Reinforced Surveillance

SD5
Super Dynamic
Family

Recording

WJ-HD616/716



High quality/frame rate
Reliability
SD5 Link

Viewing

New LCD Monitor

WV-LW1900/2200



High picture quality
High definition

Other functions

- **WJ-HD616/716 is compatible with Pelco D protocol to control the cameras via RS485.**
- **Flexible Playback Mode include up to 100x speed play, Goto Date and Goto Last allowing flexible playback operations. Jog/Shuttle control allows intuitive operation.**
- **3D Scan Conversion function for frame recording reduces tearing, motion blur and flicker even when the subject is moving.**
- **Audio Recording: Up to 4 Audio channels can be recorded and played back.**
Note: Only single channel audio can be played at a time.
- **Data Security: Alteration detection available for data security.**
- **Easy Maintenance: Hot plug HDDs can be replaced without stoping the recording. Main PCB can be accessed from front without opening the top cover.**
- **Reliability: With the embedded real-time OS and the purpose built hardware, WJ-HD616/716 ensures 24/7 operation.**