

32CH Standalone Network Video Recorder -

Reliable Network Video Recorder for Small Multi-sites Applications

Ver 1.0.0

DATASHEET



- Manage up to 32 Network Cameras
- Recording up to 960fps @ 1280x1024
- Backup database through USB
- Export Playback Videos to AVI
- Web-based E-map Event Alert
- Two-way Audio
- Supports E-SATA
- VGA local display
- Mobile Devices Remote Monitoring
- 4 bay, supports RAID 0, 1, 5, 10

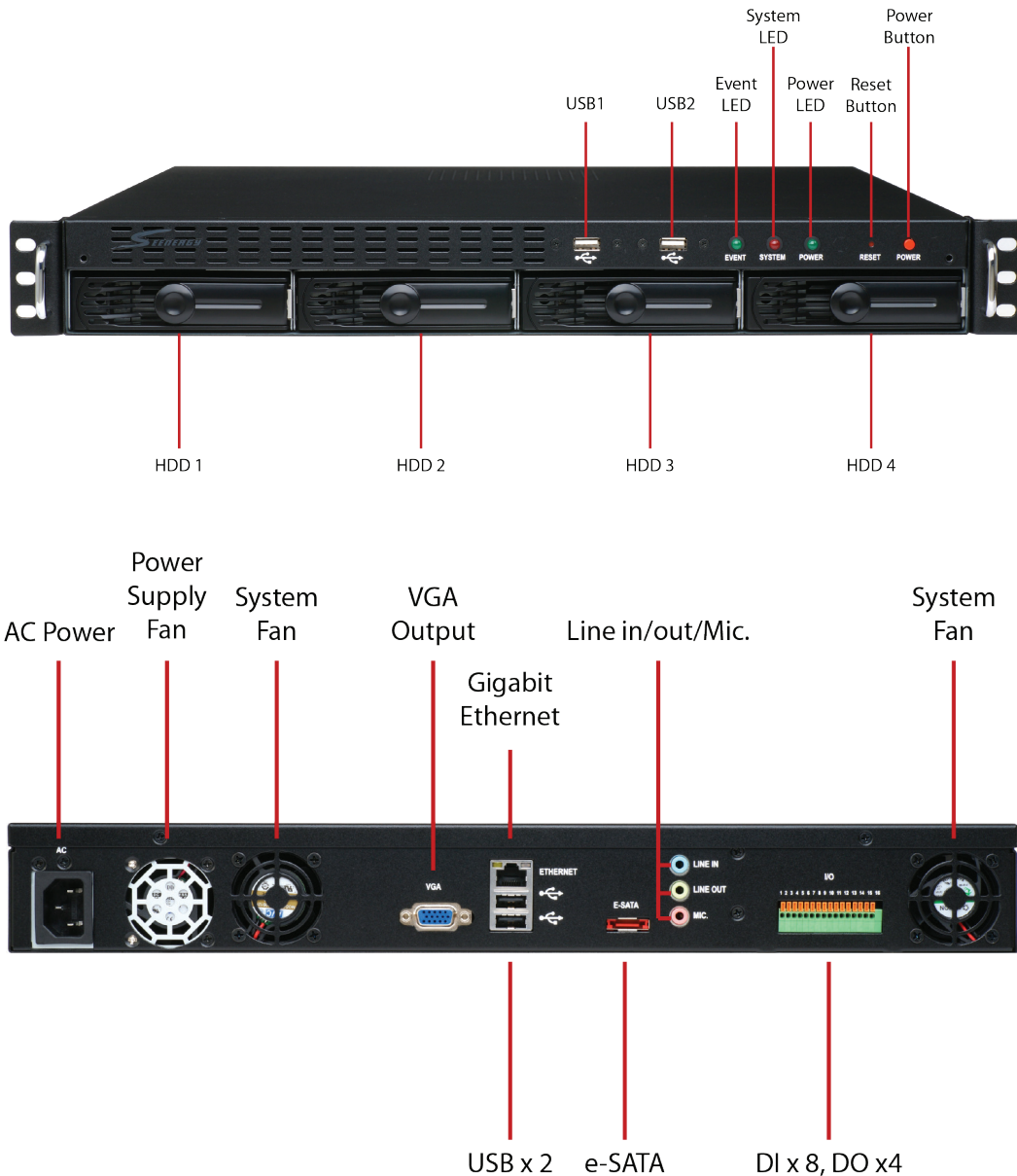
256CH CMS
FREE Bundled!!

The NVR is designed for use within a surveillance system, and performs recordings and playbacks pictures from network cameras in the system. It is an 32-channel network video recorder (NVR) for enterprise applications. It provides uninterrupted recording also in full frame rate 1.3Mp resolution for up to 32 connected cameras. Up to 32 cameras can be connected via a network and it is possible to record their camera pictures. It is possible to perform the settings or operate the NVR using a web browser installed on a PC connected to a network and live videos can be viewed on major mobile devices through its web browser. Recorded video can be played back from remote site by a PC. SVR-632U is compatible with most major brand cameras and its ability to automatically search and find the available cameras on the network can greatly reduce the user's effort when configuring the system.

Preliminary

Hardware Specifications

CPU & Memory	<ul style="list-style-type: none"> • ATOM D525/2GB DDR2 RAM 	Power	<ul style="list-style-type: none"> • 200W ATX power supply, 100-240V
Ethernet	<ul style="list-style-type: none"> • 10BaseT / 100BaseT/1GBaseT and half duplex / full duplex auto-negotiation duplex auto-negotiation 	Dimensions	<ul style="list-style-type: none"> • 462 x 430 x 54 mm
HDD	<ul style="list-style-type: none"> • SATA HDD Slot x 4 (SATA I or SATA II) • Max. Capacity: 3TB per HDD • E-SATA x 1 (Max. 8TB, 2TB x 4 HDDs) 	Weight	<ul style="list-style-type: none"> • 7kg
LED	<ul style="list-style-type: none"> • Power/System/Event 	Temperature	<ul style="list-style-type: none"> • Operating: 0 to 45°C, 0 to 80% non-condensing • Storage: -20 to 60°C
Buttons	<ul style="list-style-type: none"> • Reset/Power 	Humidity	<ul style="list-style-type: none"> • 0% ~ 80% (non condensing)
Connectors	<ul style="list-style-type: none"> • USB x 4 • E-SATA x 1 • Audio line-in, line-out, mic. 	Safety	<ul style="list-style-type: none"> • FCC Class A/CE/UL (power supply only)/BSMI



Software Specifications (Web)

Cameras

Add Camera	Manual/Smart Camera Search
Max. Channels	32

Video

Compression	MJPEG/MPEG-4 Part 2/H.264
Resolution	5 MP/HD/MegaPixel/FD1/CIF/QCIF
Max. Frame Rate	960fps (1.3 MegaPixel, H.264)

Audio

Streaming	Two-way audio
------------------	---------------

Live View

Display Mode	Live View/Playback/Full Screen
Split Screen	1/4/16/36 (web), 1/4/6/9/13/16/36 (local UI)
Full Screen	1/4/16/36 (web), 1/4/6/9/13/16/36 (local UI)
PTZ Support	Virtual PTZ Panel/Auto Pan/Preset Point/Preset Sequence/Digital PTZ
Sequence Mode	Sequence All/Manually Selected cameras in 1/4/16 split view with configurable timer
Snapshot	Video snapshot in JPEG format
E-Map	Motion Detected Event Display on E-Map/Google Map (Web only)
Mobile Device	Live image view through mobile device's web browser on iPhone/Blackberry/Android, and "NVR Viewer iPhone app

Playback

Split Screen	1/4/16
Search Method	Time/Date, Event
Playback Controls	Play/Pause/Stop/Forward/Reverse/Speed Adjust/Frame by Frame
Export AVI	Export Playback Videos to Local Computer in AVI Format

Recording

Capacity	Depends on hard disk
Recording Mode	Manual/Continuous/Scheduling/Event
Scheduling Types	Manual Select/Profile-based/Weekly Mode

Network

Protocols	HTTP/SMTP/DHCP/ARP/NTP/DNS/UPnP/FTP
Streaming Protocols	Depend on the supported cameras

User Management

Management	User/Group
Number of Groups	7 (Administrator/Guest/User Define * 5)
Privileges	Live View/Playback/System Configurations/Camera Configurations/Recording Configuration/Event Configuration/PTZ/System Options

Triggers & Events

Events	System Events -- System Start, System Settings modified, Camera Settings Modified, Start Recycle, Disk Fail Camera Events -- Motion/Sensor Detection
Event Actions	Mail/FTP/Buzzer/Record
Event Recording	Pre/Post Event Settings

Central Management

Central Management	Support SEEnergy 256CH "π-Vu Central Basic" Central Management Software (CMS)
---------------------------	---

Power & Storage

UPS	Support External UPS System
Storage	Support SATA x 4, Max. 3TB per drive, ESATA x 1, max. 8TB

Log Types	Service/Camera PTZ/Recording/Camera connection/Backup/Restore
------------------	---

Systems

Mini. Hardware Requirements	CPU: Intel Core 2 Duo @ 2.4 Ghz or higher RAM: 1GB or above Network: 100 Megabit Network Interface or above
Mini. Software Requirements	IE Browser version 7 or above

General

Languages	(Web UI) English/Trad. Chinese/Simp. Chinese/Japanese/Spanish/Italian/German/Danish/Czech/Polish/French/Russian/Slovensky/Hungarian/Portuguese/Dutch/Turkey/Finnish (Local UI) English
Packaging	SVR-632U NVR (HDD NOT included)/CD with Software tool/Datasheet/Quick Guide/User's Manual/Warranty Card/Power cord

Software Specifications (Local Display)

Live View

- Display Mode** Live View/Playback/Full Screen
- Split Screen** 1/4/6/9/13/16/36
- Full Screen** 1/4/6/9/13/16/36
- PTZ Support** Virtual PTZ Panel/Auto Pan/Preset Point/Preset Sequence/Digital PTZ
- Sequence Mode** Sequence All/Manually Selected cameras in 1/4 split view with configurable timer
- Snapshot** Video snapshot in JPEG format
- E-Map** Motion Detected Event Display on E-Map



Playback

- Split Screen** 1/4
- Search Method** Time/Date, Event
- Event Search** All/Time/Channel/Event Type/Event ID
- Playback Controls** Play/Pause/Stop/Forward/Reverse/Speed Adjust/Frame by Frame
- Other Functions** Digital PTZ/Screenshot

E-Map Monitor

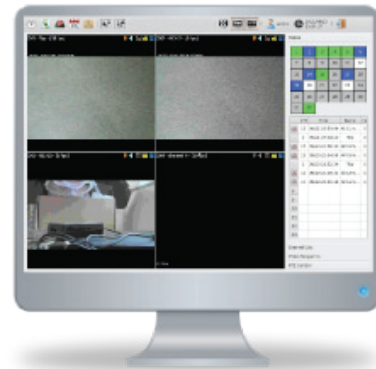
- Display** PIP Video integrated on E-Map
- Event Display** Pop-up video display on the map
- Management** Multi-layer with group management

Event Monitor

- Live** Instant event display with thumbnail view
- History** Search history event recordings with thumbnail view

Input Devices

- Supported input devices** USB mouse/keyboard



Application Diagram

256 CH CMS Software π-Vu Central Basic

