

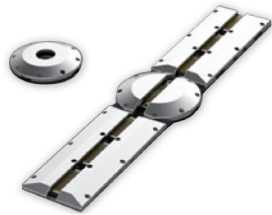


REVEAL WHAT LIES BELOW
**UNDER VEHICLE SCREENING
SYSTEM**

01 SCENARIOS

Crowded airports, high-volume venues, large-scale activities, and other outdoor public places commonly host both traffic. In these places, criminals can use vehicle chassis for hiding or smuggling illegal items, using vehicles for nefarious purposes. As a result, vehicle chassis inspection has been incorporated into the most up-to-date security installations for routine surveillance.

In order to meet the needs of customers in diverse scenarios, Hikrobot independently developed two types of Under Vehicle Screening System (UVSS), accurately an image of the underside of a moving vehicle, providing advanced, critical security.



Fixed UVSS

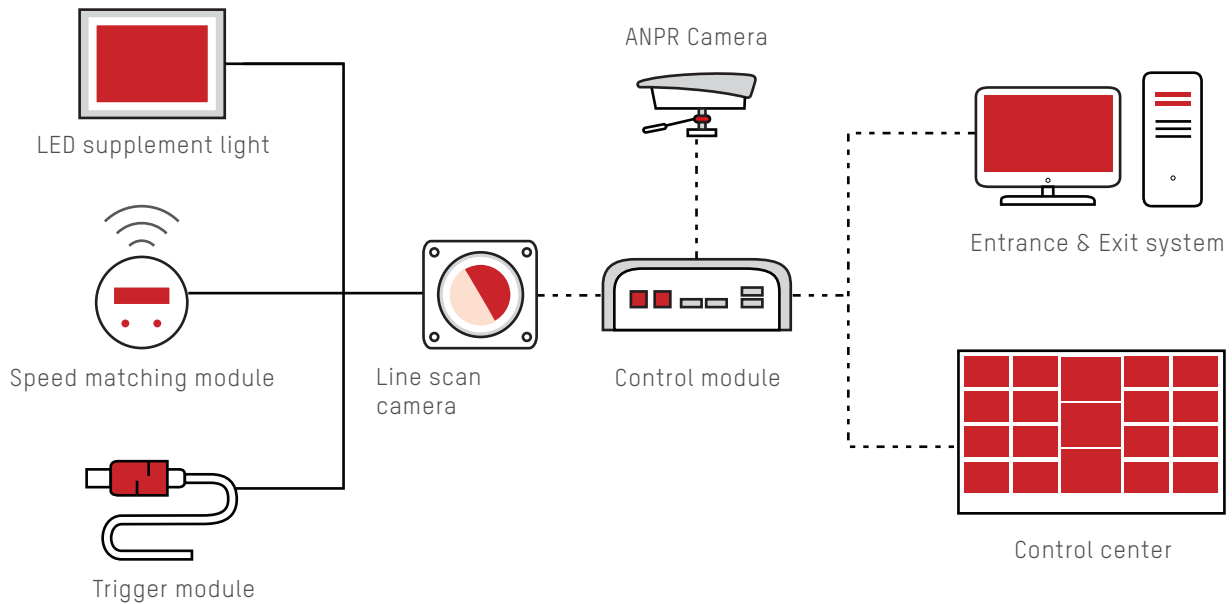


Portable UVSS

02 INTRODUCTION

The UVSS is composed of several modules, including a trigger module, a speed-matching module, a complementary-light module, a line scan camera module, and ANPR, along with a corresponding controller. It has been designed for complete reliability, operating continuously 24 hours a day, 7 days a week. Professional, industrial-grade line scan camera features HD imaging, and is flexible, for both fixed and portable installations. Its convenient construction is easy to install and operate.

UVSS TOPOLOGY



*ANPR camera optional in fixed type, standard in portable type.

Legend:
—— Control wire
----- Network wire

■ FIXED UVSS

The fixed UVSS model features the imaging portion of the ground and the electric control cabinet section, designed for applications such as prison sally port, border checkpoints, entrances, and more. This model provides a super-wide field angle and highly critical protection level.



- ① Sensing Coil
- ② Speed Matching Module
- ③ Line Scan Camera
- ④ LED Lighting
- ⑤ Control Cabinet

■ PORTABLE UVSS

Composed of ANPR camera, display equipment, and auxiliary control equipment, the portable UVSS model has been designed to secure public venues, hotel entrances, and other temporary vehicle chassis inspection needs. It features , convenient transportation, and easy integration.

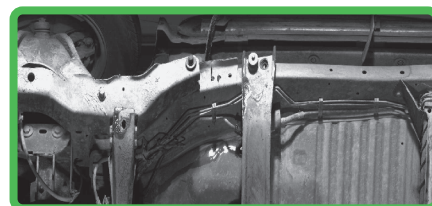
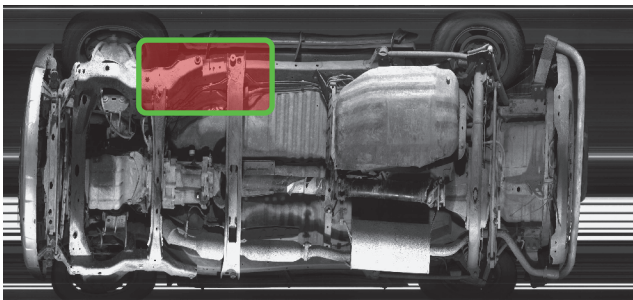


- ① UVSS
- ② Mobile Operation Platform
- ③ Monitor
- ④ ANPR Camera

03 SYSTEM FEATURES

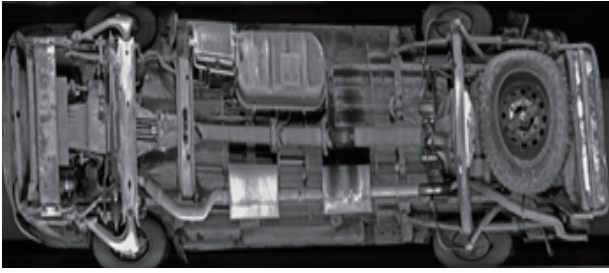
EXCELLENT IMAGE QUALITY

- FOV: Fixed: 180°, Portable: 170°- No hidden angles!
- Customized, target lenses with excellent imaging clarity
- Optical lenses designed for image distortion correction, yielding natural, accurate imaging

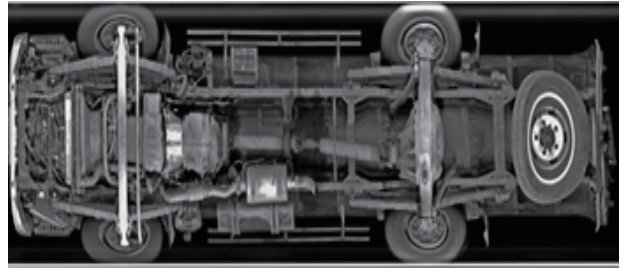


SPEED MATCHING MODULE: NO SPEED LIMIT

- System functions under high, low, and speeds
- Speed Range: ≤ 30 km/h (can be customized for higher speeds)



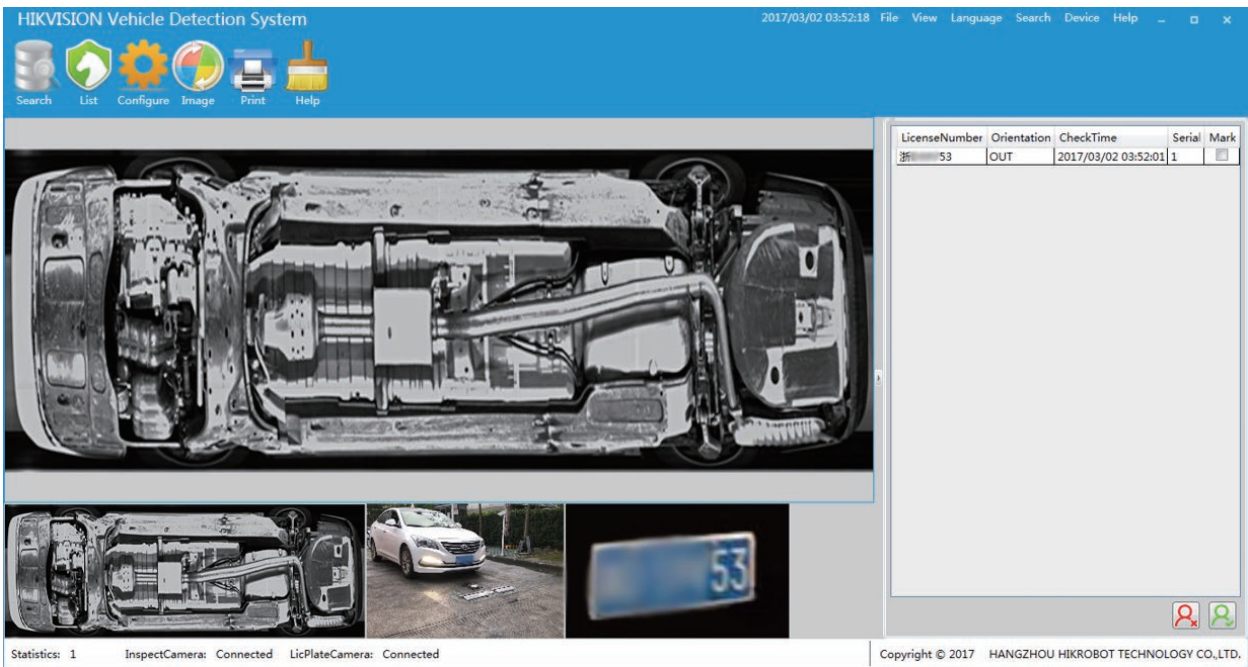
10 km/h



30 km/h

PROFESSIONAL SUPPORTING SOFTWARE WITH ROBUST FUNCTIONALITY

- Integrated Vehicle Information
- Supports searches by license plates and time



04 COMPARISON CHART

Hand-Held	Track Type	Hikvision Models
Manual testing, low efficiency	Need to manually control the track, low efficiency	Automatic detection, high efficiency
Parking check testing takes up to a few minutes	Parking check test time at more than one minute	No need to stop, automatic detection time ≤ 1 second
Difficult to store traceability, cannot store information	Storage traceability inconvenient	Information software, storage traceability perfectly
Small field of view, high rate of missed vehicles	Small field of view, difficult to capture entire underside of vehicles	Field of view angle 180° on fixed model, 170° on portable model, with complete image of vehicle underside
No protection	Poor protection performance, difficult to cope with outdoor	Fixed: IP68 protection, bears 30 tons Portable: IP66 protection, bears 10 tons

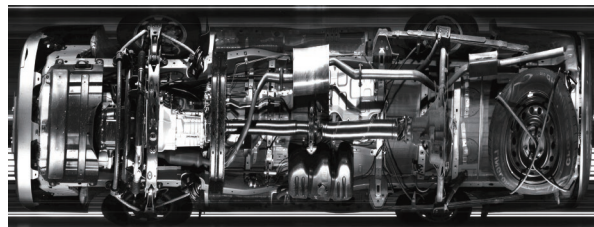
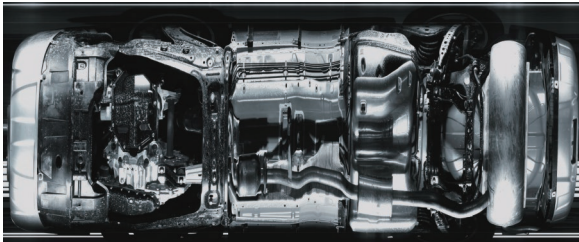
05 APPLICATIONS

The system can be used as vehicle chassis detection equipment, carrying out safety inspections on the underside of vehicles. It can also be integrated into existing import and export equipment for use in airports, and many other critical places.

- Fixed UVSS: Gas station, Customs, Important places/activities, Jails
- Portable UVSS: Temporary checkpoint, Entrance of hotel, Important meetings/activities, Other places where casual inspection is needed



06 SAMPLE IMAGES



07 SPEC

Model	MV-PD-030001-02	MV-PD-030001-03
Parameters	Fixed under vehicle screening system	Portable under vehicle screening system
Max resolution	2048*12000	
FOV	≥ 180°	≥ 170°
Vehicle chassis width	≤ 4000mm	
Vehicle chassis height	≥ 60mm	
Detection speed	≤ 30km/h, real-time speed matching	
Picture format	BMP/JPEG	
Power consumption	200W, AC220V	100W, AC220V
Working temperature	-25 °C ~ +70 °C	
Protection level	IP68	IP66
Load-bearing	30 tones	10 tones
OS	Windows XP/7/8	



REVEAL WHAT LIES BELOW UNDER VEHICLE SCREENING SYSTEM

Distributed by



HIKVISION®

Headquarters

No.555 Qianmo Road, Binjiang District,
Hangzhou 310051, China
T +86-571-8807-5998
hikrobotics@hikvision.com

Hikvision USA
T +1-909-895-0400
sales.usa@hikvision.com

Hikvision Italy
T +39-0438-6902
info.it@hikvision.com

Hikvision Singapore
T +65-6684-4718
sg@hikvision.com

Hikvision Africa
Tel: +27 (10) 0351172
sale.africa@hikvision.com

Hikvision Europe
T +31-23-55-42-770
info.eu@hikvision.com

Hikvision France
T +33(0)1-85-330-450
info.fr@hikvision.com

Hikvision Oceania
T +61-2-8599-4233
salesau@hikvision.com

Hikvision Turkey
T +90-216-521-70-70
sales.tr@hikvision.com

Hikvision Middle East
T +971-4-8816086
salesme@hikvision.com

Hikvision Spain
T +34-91-737-16-55
info.es@hikvision.com

Hikvision Canada
T +1-909-895-0400
sales.usa@hikvision.com

Hikvision Kazakhstan
T +7-727-9730667
nikia.panfilov@hikvision.ru

Hikvision Russia
T +7-495-669-67-99
saleru@hikvision.com

Hikvision Poland
T +48-22-460-01-50
info.pl@hikvision.com

Hikvision Korea
T +82-31-731-8841
sales.korea@hikvision.com

Hikvision Hong Kong
T +852-2151-1761
info.hk@hikvision.com

Hikvision India
T +91-22-28469900
sales@pramahikvision.com

Hikvision UK
T +01628-902140
sales.uk@hikvision.com

Hikvision Brazil
T +55 11 3318-0050
Latam.support@hikvision.com

Follow us on social media to get the latest product and solution information



www.hikrobotics.com

