



# WJ-ND400

**High Performance Network Disk Recorder**

**Security & Sound Systems Business Unit,  
System Solutions Company**

# Overview



H.264, MPEG-4 and JPEG multi-encoding compatibility.

Up to 64 network cameras can be connected and recorded.

Flexible Recording Mode: Emergency, SCHEDULE including Schedule, Manual and Event.

Playback VMD Search

Up to 54 TB with 9 HDD slots in the main unit + 5x WJ-HDE400 Extension Units each with 9 HDD slots

RAID5/6, Embedded OS, Alteration detection for security and reliability.

WJ-ND400: Main unit with one HDD installed.

WJ-ND400K: Main unit without HDD.

WJ-HDE400: Extension Unit with 9 HDD slot



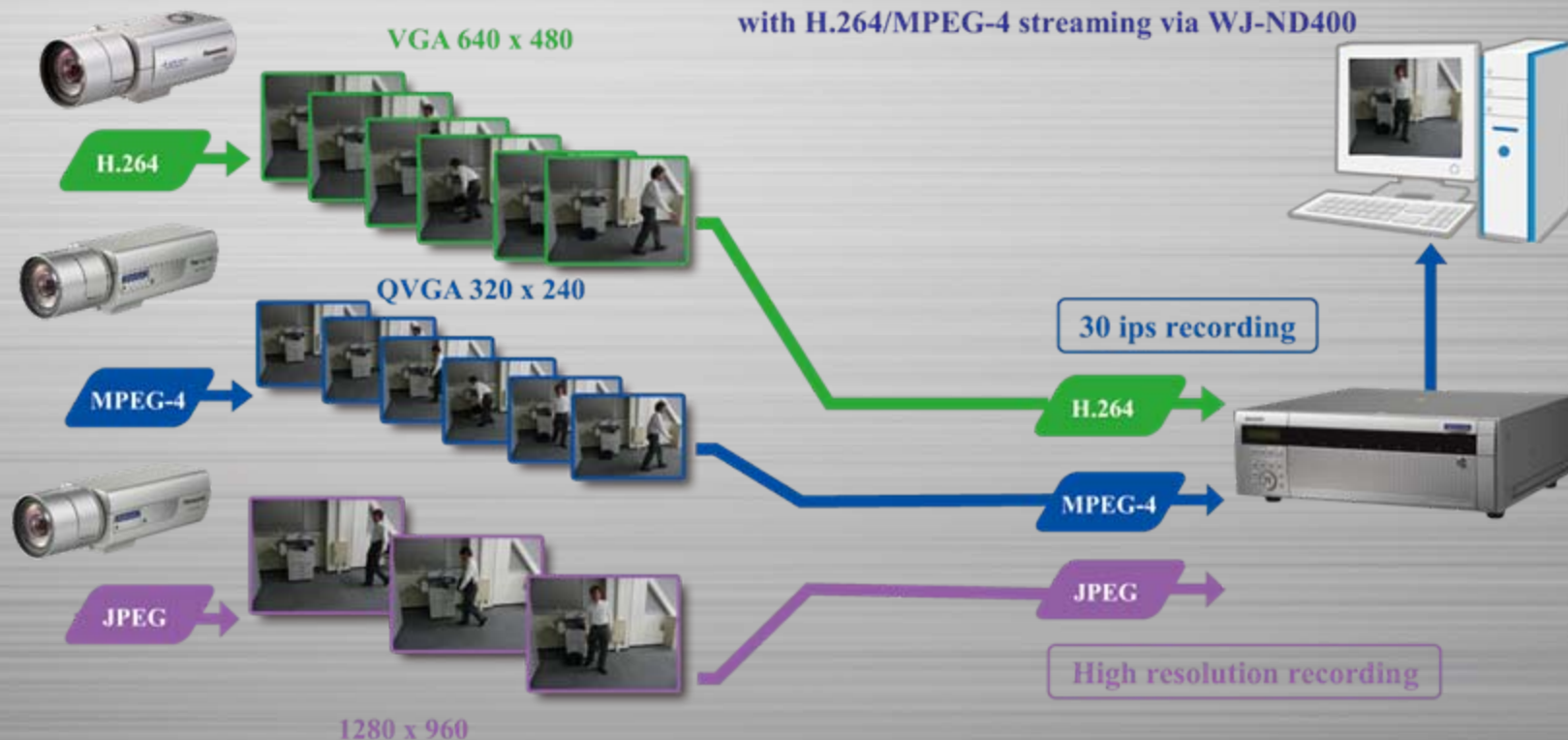
# H.264/MPEG-4/JPEG

**WJ-ND400 can record H.264, MPEG-4 and JPEG images simultaneously.**

High resolution recording or high frame rate recording is at user's choice.

## Real Time Monitoring

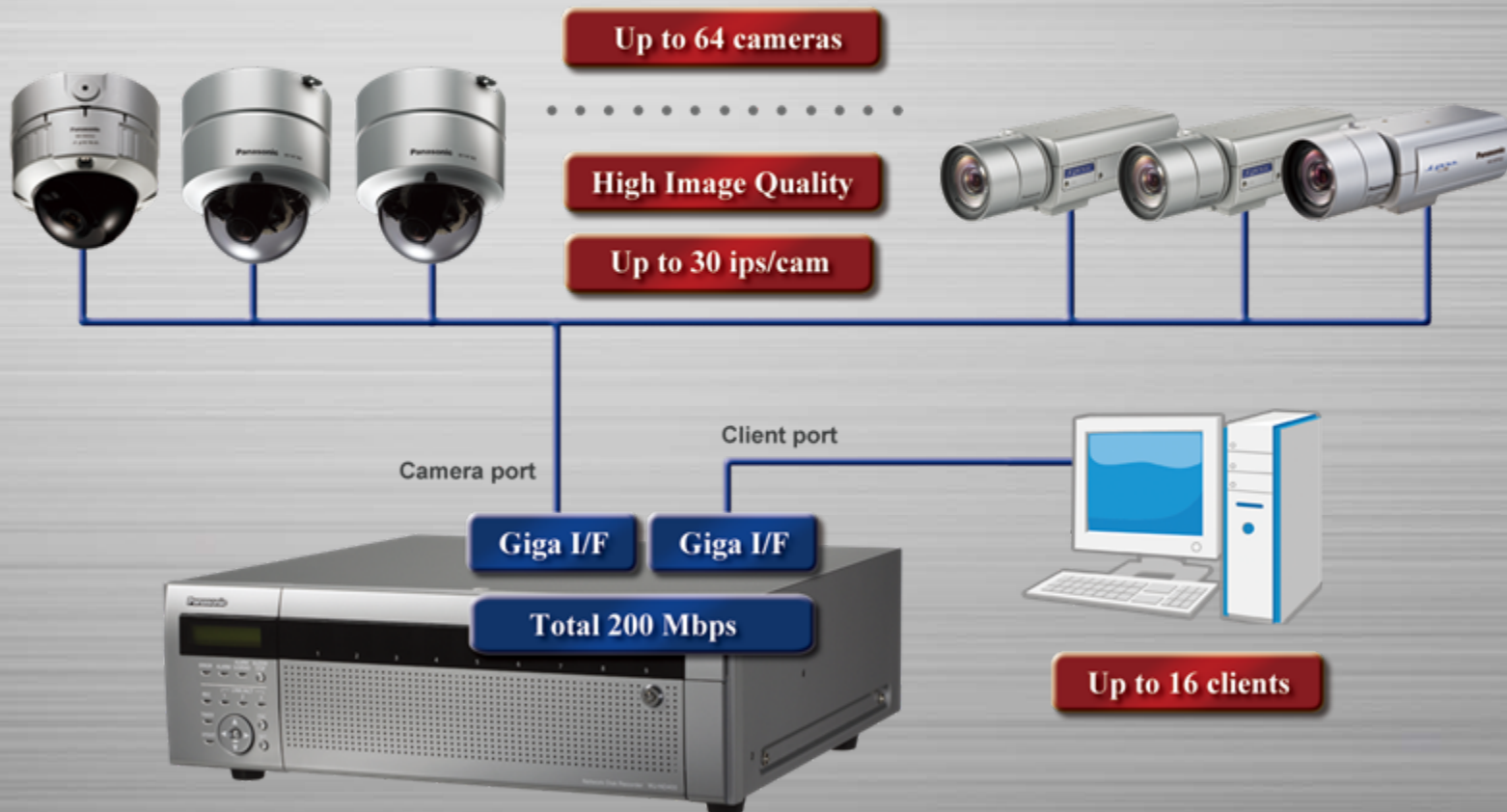
with H.264/MPEG-4 streaming via WJ-ND400



# High Throughput

**200 Mbps high throughput allows more cameras, higher image quality, faster frame rate and more clients. Best match with Megapixel i-Pro Network Cameras**

Up to 64 network cameras can be connected without extra license fee and their images can be recorded simultaneously.



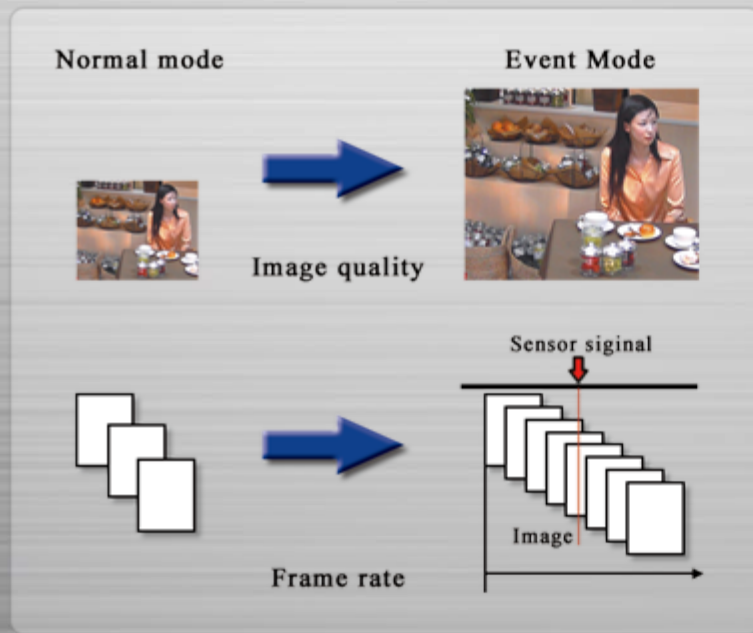
Note: One port or two ports operation is available. A total of the two ports is 200Mbps.  
Total number of Camera REC+Audio REC+Camera with VMD data is 96.



# Flexible Recording

## Flexible Recording Mode: Emergency, SCHEDULE including Schedule, Manual, Event.

Schedule mode includes 8 recording programs with individual recording mode for each camera, and 6 time schedules per day.



# Flexible Recording

## Flexible Recording Modes: Manual, Schedule including Event (Pre/Post), Emergency.

Sched

per day.

http://192.168.0.203 - Program Setup - Microsoft Internet Explorer

Program1

Copy the other Program Program2 Copy

Program setup 128Mbps =

Cam.	Model	Compression	Measurement		Recorder setup									
			Max. network Speed (Mbps)	Max. bit rate (ip)	Live video		Manual rec.	Schedule rec.	Event rec.				Audio rec.	SD memory rec.
					Rate	Audio			Pre-event		Post-event			
Rate	Duration	Rate	Duration											
1	WV-NP100x	M-PE0	-	-	All	Off	15ips	All	15ips	10s	5ips	30s	Off	Off
2	WV-NP24x	MP-E04	-	-	All	Off	All	All	All	10s	I-Frame	30s	Off	Off
3	WV-NP302	MP-E04	-	-	All	Off	All	All	All	10s	I-Frame	30s	Off	Off
4	WV-NW484	MP-E04	-	-	All	Off	I-Frame	All	I-Frame	10s	I-Frame	30s	Off	Off
5	WV-NW96x	MP-E04	-	-	All	Off	I-Frame	All	I-Frame	10s	I-Frame	30s	Off	Off
6	WV-NS202A	MP-E04	-	-	All	Off	I-Frame	All	Off	10s	Off	30s	Off	Off
7	WV-NP284	MP-E04	-	-	All	Off	I-Frame	All	Off	10s	Off	30s	Off	Off
8	WV-NP95x	MP-E04	-	-	All	Off	I-Frame	All	Off	10s	Off	30s	Off	Off
9	WJ-NT314-1	MP-E04	-	-	All	Off	I-Frame	All	Off	10s	Off	30s	Off	Off
10	WV-NP304	MP-E04	-	-	All	Off	I-Frame	All	All	5s	All	10s	Off	Off
11	-	-	-	-	Off	Off	Off	Off	Off	10s	Off	30s	Off	Off
12	-	-	-	-	Off	Off	Off	Off	Off	10s	Off	30s	Off	Off
13	-	-	-	-	Off	Off	Off	Off	Off	10s	Off	30s	Off	Off
14	-	-	-	-	Off	Off	Off	Off	Off	10s	Off	30s	Off	Off
15	-	-	-	-	Off	Off	Off	Off	Off	10s	Off	30s	Off	Off
16	-	-	-	-	Off	Off	Off	Off	Off	10s	Off	30s	Off	Off

Cam. 17-32 33-48 49-64 Set

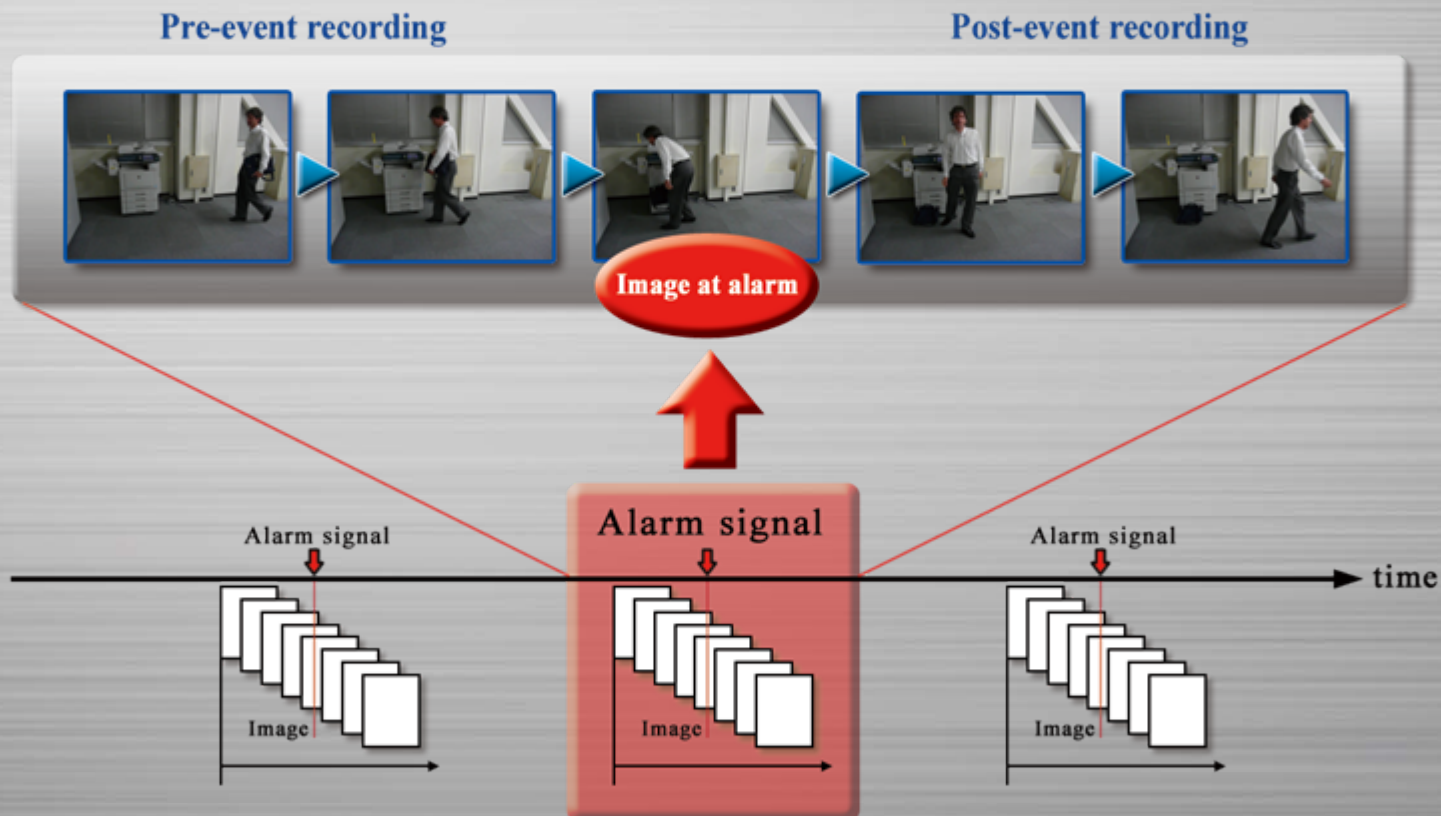
Done

Individual recording mode is available for each camera

# Event Recording

**Event recording mode provides effective use of disk space.**

Images prior to the alarm can be recorded so that the critical moment is less likely lost.



Note: Up to 15 minutes with dedicated HDD for Pre-event.



# User Friendly GUI

User friendly GUI including display mode control, camera control, recorder control and status monitoring allows intuitive operations, reducing the burden on operators.

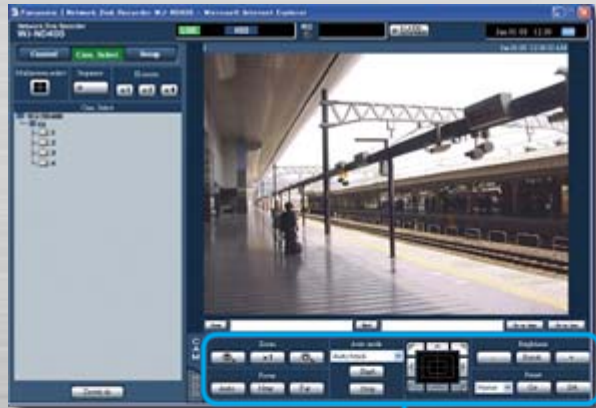




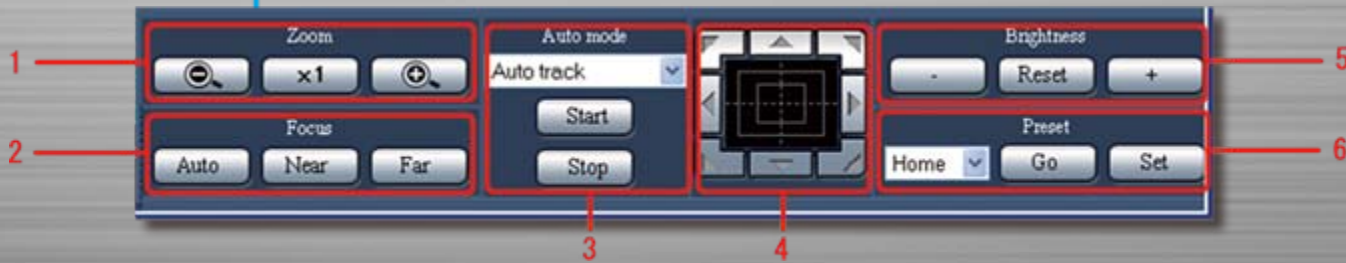
# Camera control

## Pan/Tilt, Zoom, Focus, Brightness, Preset Position, Auto mode can be controlled from the browser GUI.

Camera control is available when the live image from a PTZ camera is displayed on the spot screen.



[CAM] tab



Note: Supported function depends on the camera model.

### 1. [Zoom] box

Click [-] or [+] to adjust the zoom. Click [x1] to return the zoom to normal.

### 2. [Focus] box

Click [Near] or [Far] to adjust the image focus.

Click [Auto] to adjust the focus automatically (auto focus).

### 3. [Auto mode] box

Select the camera's auto mode function (auto track, auto pan, preset sequence, sort, patrol) by pull-down menu.

### 4. Control pad/buttons

Click the buttons to move the camera pan/tilt.

Click in the control pad to adjust the horizontal/vertical position (pan/tilt) of the image.

### 5. [Brightness] box

Click [-] (Dark) or [+] (Bright) to adjust the lens iris.

### 6. [Preset] box

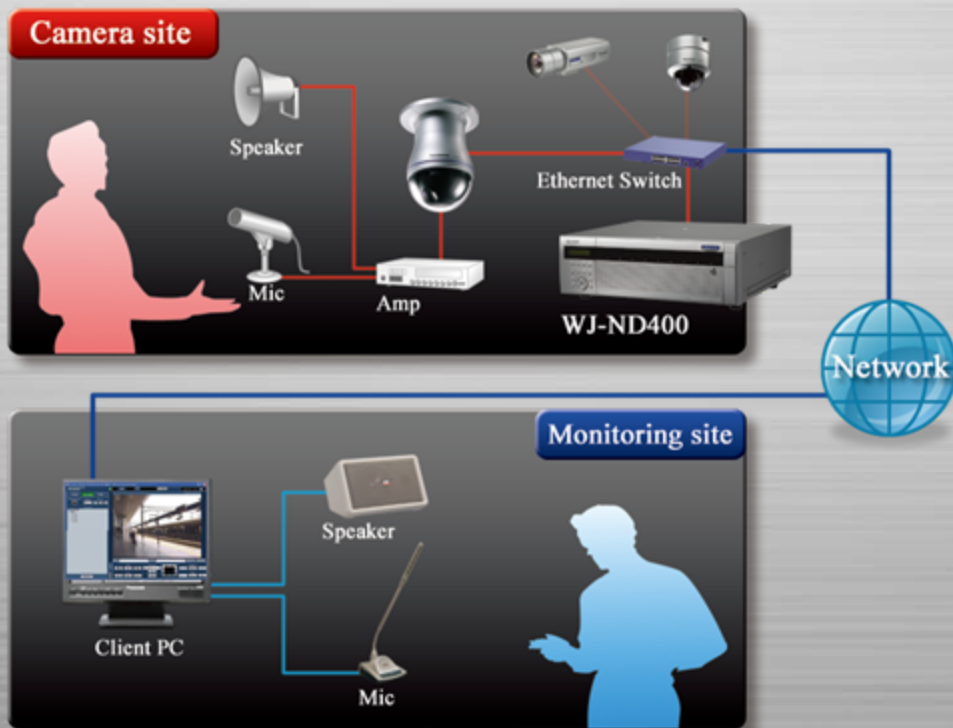
[Go] button: The camera moves to the pre-registered preset position.

[Set] button: Register preset positions that specify the direction of the camera.

# Audio recording

Audio from up to 64 i-Pro network cameras can be recorded and played back.

Audio streaming can be set ON or OFF for each camera individually.



## [Control] Panel

The screenshot shows the Network Disk Recorder WJ-ND400 Control Panel. The panel includes buttons for Control, Cam. select, Setup, Multicam select, Sequence, Es-oom, Search, Area select, Copy, Log, Error log, Access log, Event log, Network log, Rec event, and a table of recorded events. A red box highlights the 'Info' column in the event list, which contains speaker icons.

Time & date	Ch	Rec	HDD	Info
Jan.01.08 12:29:24 AM	1	MAN	MAIN-1	🔊
Jan.01.08 12:29:24 AM	2	MAN	MAIN-1	🔊
Jan.01.08 12:29:24 AM	3	MAN	MAIN-1	🔊
Jan.01.08 12:29:24 AM	4	MAN	MAIN-1	🔊
Jan.01.08 12:29:24 AM	1	MAN	MAIN-1	🔊
Jan.01.08 12:30:41 AM	1	MAN	MAIN-1	🔊
Jan.01.08 12:30:41 AM	2	MAN	MAIN-1	🔊
Jan.01.08 12:30:41 AM	3	MAN	MAIN-1	🔊
Jan.01.08 12:30:41 AM	4	MAN	MAIN-1	🔊
Jan.01.08 12:18:16 AM	1	MAN	MAIN-1	🔊
Jan.01.08 12:18:16 AM	2	MAN	MAIN-1	🔊
Jan.01.08 12:18:16 AM	3	MAN	MAIN-1	🔊
Jan.01.08 12:18:16 AM	4	MAN	MAIN-1	🔊
Jan.01.08 12:03:42 AM	2	MAN	MAIN-1	🔊
Jan.01.08 12:03:42 AM	3	MAN	MAIN-1	🔊
Jan.01.08 12:03:42 AM	4	MAN	MAIN-1	🔊

Rec. event list

Speaker icon: Record with audio.

Note: G.726 (ADPCM) 32 kbps mode only

Total number of Camera REC+Audio REC+Camera with VMD data is 96.

# Group display

Cameras can be grouped for easier browsing. Up to 8 groups are available.

Up to 16 alphanumeric characters can be used for a group title.



**[Cam. select] Panel**

Network Disk Recorder  
WJ-ND400

Control **Cam. select** Setup

Multiscreen select  Sequence  El-zoom

Cam. select

- WJ-ND400
  - G1 Entrance
    - WV.NP1000
    - WV.NP244
    - WV.NF302
    - WV.NW484
    - NT314
    - WV.NP304
  - G2 Parking
    - WV.NW960
    - WV.NS202A
    - WV.NF282
    - WV.NS950

Group title

Camera list assigned in the group

Note: A camera cannot belong to more than a group.

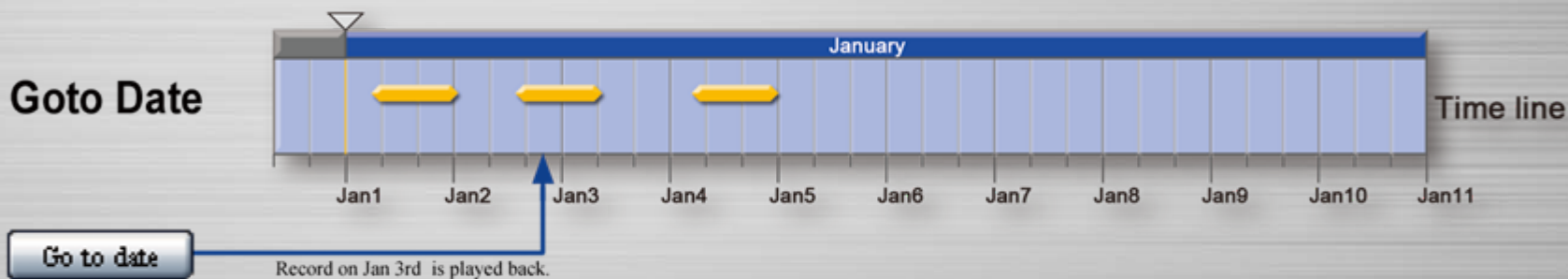


# Flexible playback

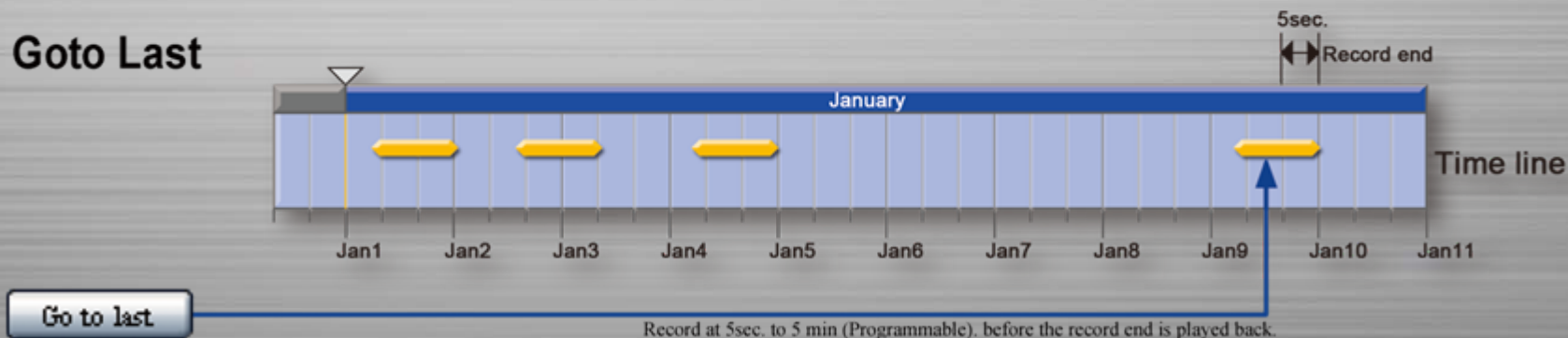
**Up to 100x speed play, Goto Date and Goto Last allows flexible playback operations.**

Goto Date (Jump to specific time/date), Goto Last (Jump to 5 sec. ~ 5 min. before the record end).

## Goto Date



## Goto Last





# Playback VMD Search

i-Pro cameras can send motion meta data when used with WJ-ND400 so that motions in the specified area in the recorded images can quickly be searched.



Image data



Motion data

+

01001101



Set the time range,  
camera CH and detection area.



Search Result



Motion in a specified area is searched.

Sensitivity depends on the VMD setup of the camera.



# Display modes

Flexible display modes include Spot, Quad (16 patterns), Spot Sequence and Quad Sequence (Live only).

Spot



Quad



Spot SEQ



Each dwell time is selectable from 2s./3s./5s./10s./20s.

Quad SEQ

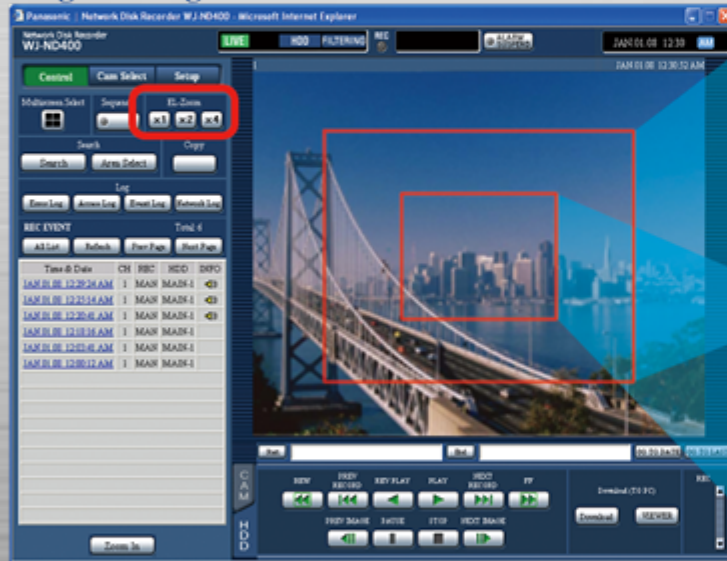


# Digital zoom

**2x, 4x Digital zoom (Live/Playback) enables precise verification.**

Pan/Tilt control is also available for zoomed area.

Original image



2x digital zoom

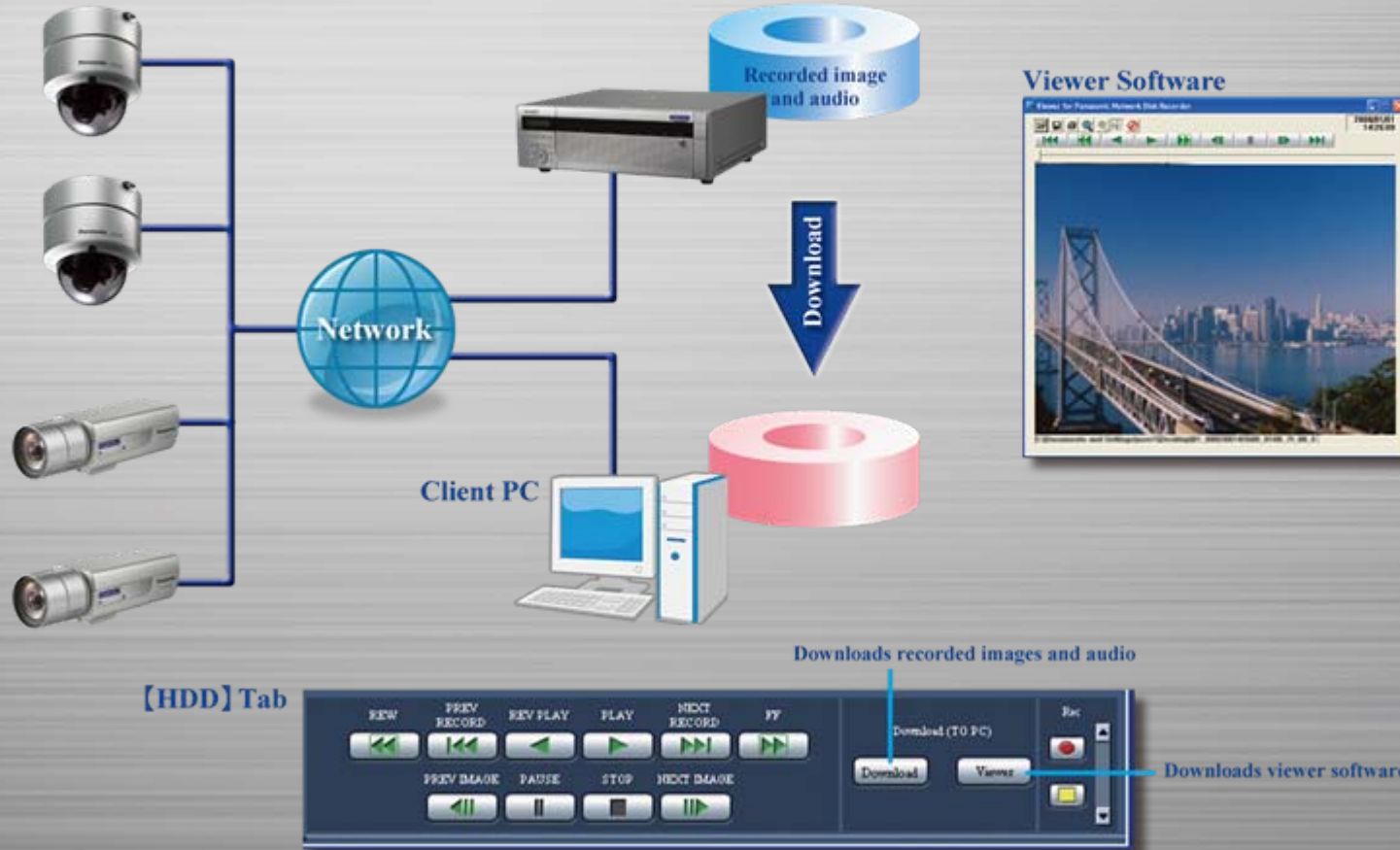


4x digital zoom

# Image download

**Recorded data can be downloaded to a PC via network.**

Downloadable viewer software allows playback of video and audio of the downloaded record.



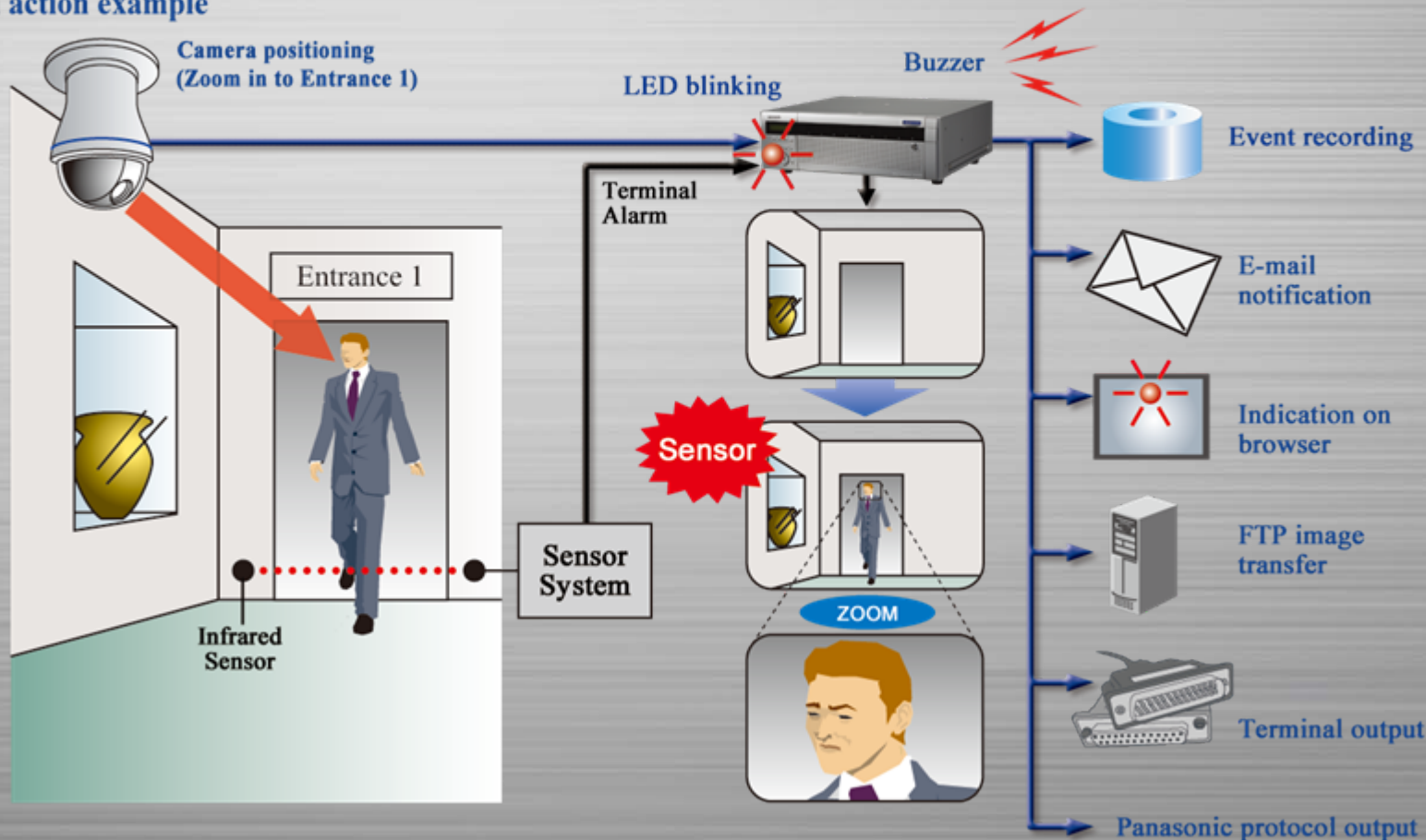


# Alarm actions

Various alarm sources and actions are available for flexible alarm control.

Alarm sources include 32x Terminal inputs, 64x Camera alarms, Panasonic Alarm Protocol.

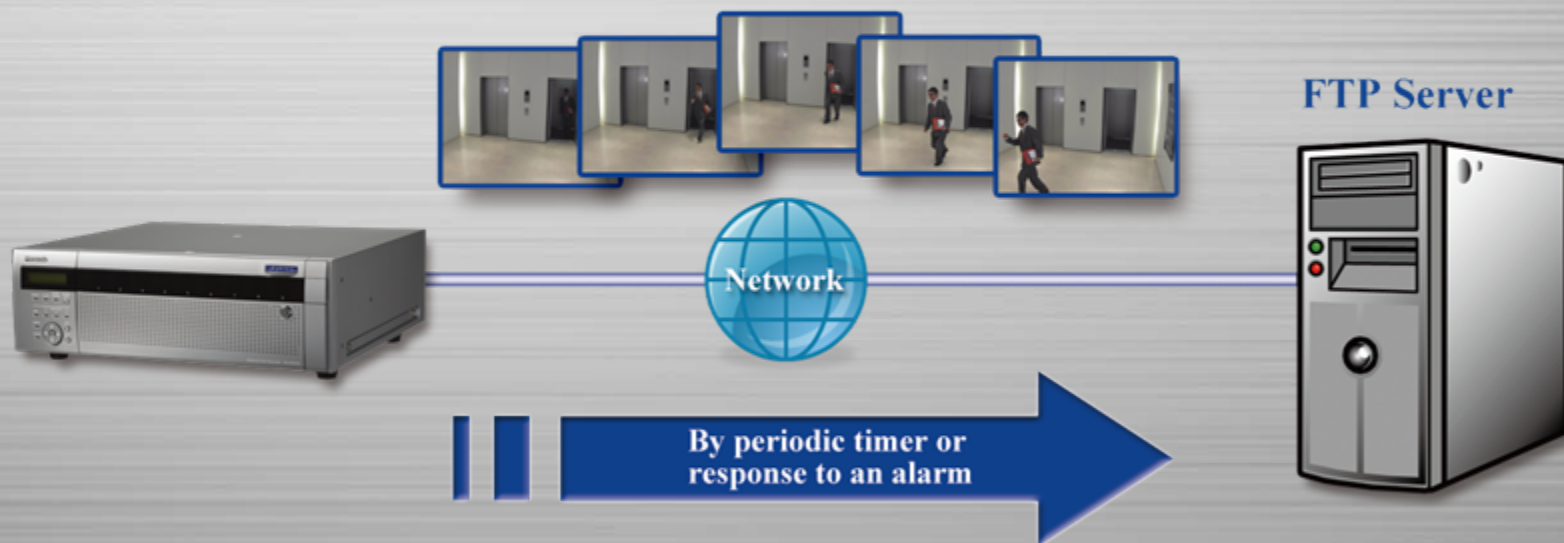
## Alarm action example



# FTP Client

**FTP client function enables periodic live image transfer or recorded image transfer in response to an alarm.**

**Live image or recorded image, JPEG only.**



# SD Memory Backup

When the network experiences a problem, images can automatically be backed up in the SD memory card in i-Pro cameras

## 1. Network trouble



## 2. Stored in the SD Memory Card

It works when used with a FTP server or an i-Pro network recorder.  
SD memory recording is available only in JPEG mode.



# SD Memory Backup

**Images recorded in the SD memory card in i-Pro network cameras during a network failure can be transferred to the recorder automatically.**

Images can be transferred even when the recorder is in recording status.

## ③ Network recovery

Transferred from the SD card



WJ-ND400

OR



FTP Server

Note: It is impossible to retrieve backup images to the FTP server automatically.



# User management

**Sophisticated user management includes User/Host authentication, 4 user levels, 16 user priorities and User-Camera View/Control partitioning.**

Up to 16 users can monitor images and control WJ-ND400 simultaneously.

## 4 User Levels

Setup  
 Quick  
 Camera  
 Server  
 Network  
 User mng.  
 Maintenance  
 Camera control  
 Error log status  
 Access log status  
 Event log status  
 Network log status  
 Alarm reset  
 Error reset  
 Alarm suspend  
 Copy  
 Manual rec. operation  
 Playback operation



Setup  
 Server  
 Network  
 Camera control  
 Error log status  
 Access log status  
 Event log status  
 Network log status  
 Alarm reset  
 Error reset  
 Alarm suspend  
 Manual rec. operation  
 Playback operation



## 【User level】 Setup Menu

	LV1	LV2	LV3	LV4
Setup	<input type="checkbox"/>	<input type="checkbox"/>	<input type="checkbox"/>	<input type="checkbox"/>
Quick	<input type="checkbox"/>	<input type="checkbox"/>	<input type="checkbox"/>	<input type="checkbox"/>
Camera	<input type="checkbox"/>	<input type="checkbox"/>	<input type="checkbox"/>	<input type="checkbox"/>
Server	<input type="checkbox"/>	<input type="checkbox"/>	<input type="checkbox"/>	<input type="checkbox"/>
Network	<input type="checkbox"/>	<input type="checkbox"/>	<input type="checkbox"/>	<input type="checkbox"/>
User mng.	<input type="checkbox"/>	<input type="checkbox"/>	<input type="checkbox"/>	<input type="checkbox"/>
Maintenance	<input type="checkbox"/>	<input type="checkbox"/>	<input type="checkbox"/>	<input type="checkbox"/>
Camera control	<input type="checkbox"/>	<input type="checkbox"/>	<input type="checkbox"/>	<input type="checkbox"/>
Error log status	<input type="checkbox"/>	<input type="checkbox"/>	<input type="checkbox"/>	<input type="checkbox"/>
Access log status	<input type="checkbox"/>	<input type="checkbox"/>	<input type="checkbox"/>	<input type="checkbox"/>
Error log status	<input type="checkbox"/>	<input type="checkbox"/>	<input type="checkbox"/>	<input type="checkbox"/>
Network log status	<input type="checkbox"/>	<input type="checkbox"/>	<input type="checkbox"/>	<input type="checkbox"/>
Alarm reset	<input type="checkbox"/>	<input type="checkbox"/>	<input type="checkbox"/>	<input type="checkbox"/>
Error reset	<input type="checkbox"/>	<input type="checkbox"/>	<input type="checkbox"/>	<input type="checkbox"/>
Alarm suspend	<input type="checkbox"/>	<input type="checkbox"/>	<input type="checkbox"/>	<input type="checkbox"/>
Copy	<input type="checkbox"/>	<input type="checkbox"/>	<input type="checkbox"/>	<input type="checkbox"/>
Manual rec. operation	<input type="checkbox"/>	<input type="checkbox"/>	<input type="checkbox"/>	<input type="checkbox"/>
Playback operation	<input type="checkbox"/>	<input type="checkbox"/>	<input type="checkbox"/>	<input type="checkbox"/>

Camera control  
 Event log status  
 Playback operation



=====



Note: Factory default of user levels is as above condition.



## 9 HDD slots

**Up to 9x 1TB serial ATA HDDs can be installed with the provided canisters. With hot plug support, the HDDs can be removed without interrupting the recording.**



Note: Factory default: 1x 500GB HDD installed.

# 54TB HDD capacity

Up to 54 TB with 9 HDD slots in the main unit and five WJ-HDE400 Hard Disk Extension Units each with 9 HDD slots.

WJ-ND400



9 x 1TB

**Max 9TB**

**6 x 9 TB = Max 54TB**

# RAID5/6

With the RAID redundancy even if one (RAID5) or two (RAID6) HDDs are damaged, recorded images can still be recovered.





# Reliability

**With the embedded OS and the purpose built hardware, WJ-ND400 ensures 24/7 operation.**

In contrast with PC-based network recorder, WJ-ND400 obtains stable reliability under even the harshest conditions.

Ideal for any surveillance application

Bank



Town Center Monitoring



Industrial

Transportation

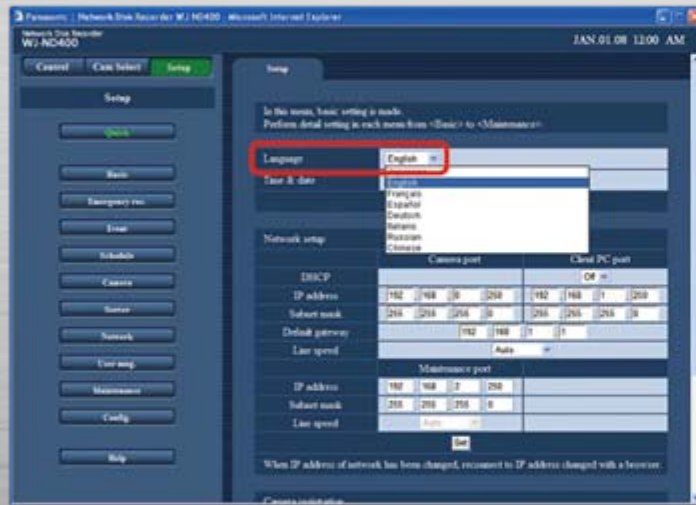
For safety operation and immediate action in emergencies

# Easy setup

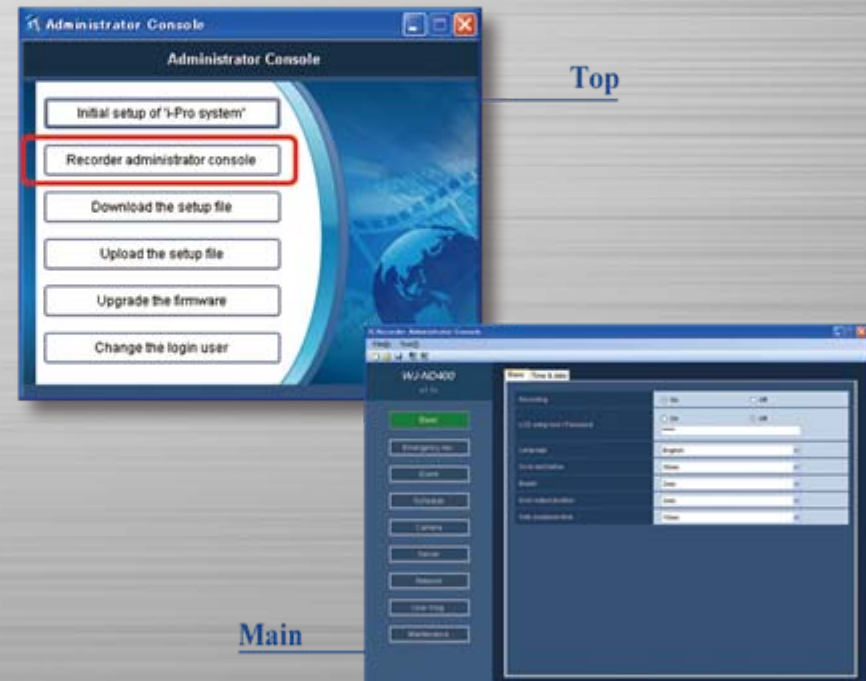
Setup can be made with the own multilingual GUI or System configuration software.

GUI language: English/French/Spanish/Germany/Italian/Russian/Chinese/Japanese

## 【Quick】 Setup Menu



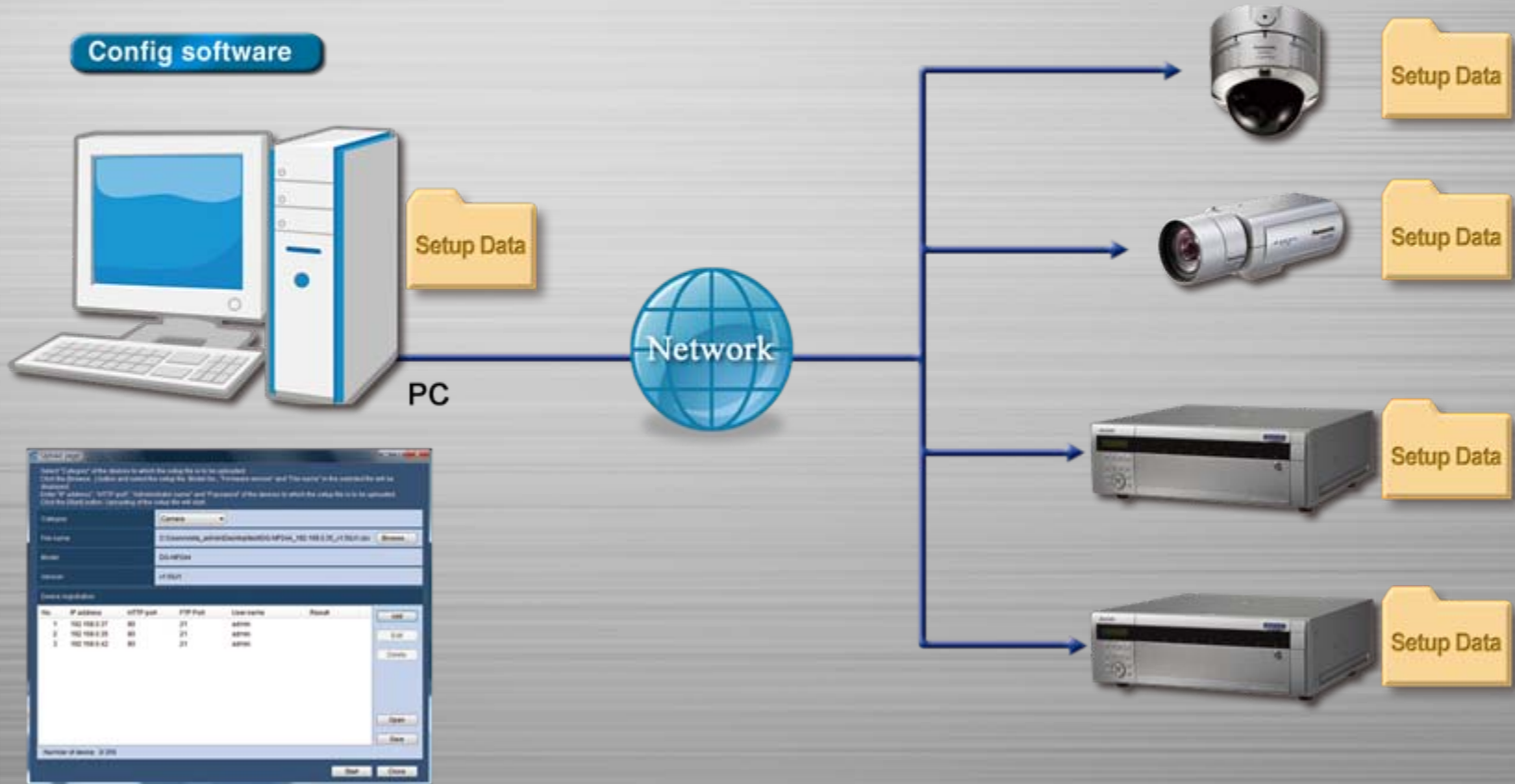
## Configuration Software



# Configuration Software

**Setup data of the Encoders, Recorders and Decoders can be programmed with the System Configuration Software, reducing setup time.**

System Configuration Software is especially effective when using the same setup data to the multiple units.





# Multi site System

**Multi-recorder-Multi-site system can be made with optional WV-ASM100 i-Pro Management Software.**

WV-ASM100 enables large scale multi-site surveillance system with management efficiency and user-friendly operation.

